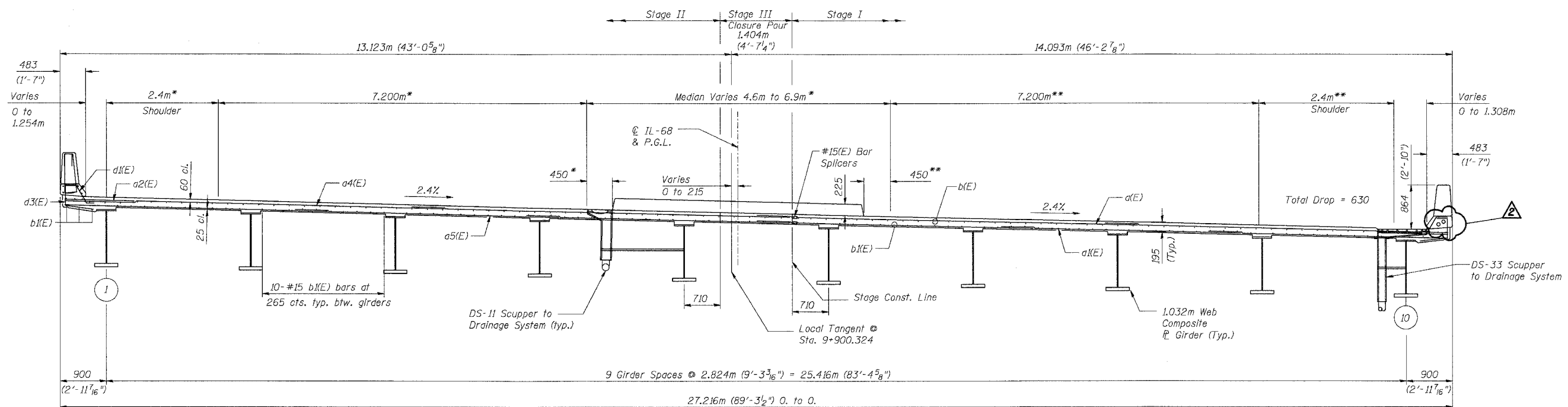


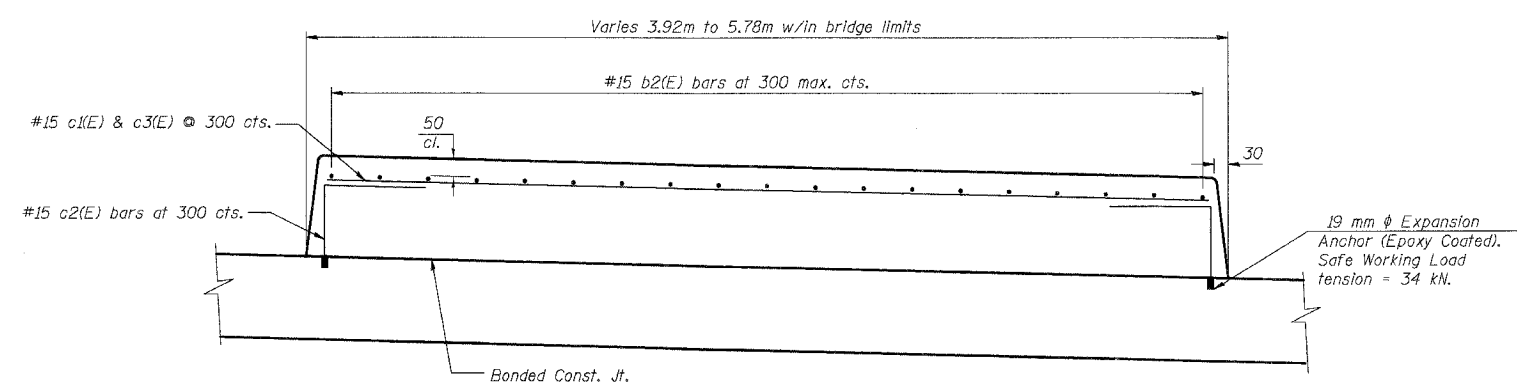
| | | | | |
|---------------------|---------------------------|--------|--------------|-----------|
| F.A.P. RTE. | SECTION | COUNTY | TOTAL SHEETS | SHEET NO. |
| 343 | 70D-Y-B-R | COOK | 283 | 165 |
| STA. | TO STA. | | | |
| FED. ROAD DIST. NO. | ILLINOIS FED. AID PROJECT | | | |
| CONTRACT NO. 62897 | | | | |



DECK CROSS SECTION

(Looking East)
 (Horizontal Dimensions @ Rt. L's to Local Tangent unless noted otherwise.)

* Radial Dimensions w/ respect to north shoulder line
 ** Radial Dimensions w/ respect to south shoulder line



SUPERIMPOSED MEDIAN

NOTES:

1. Reinforcement bars designated (E) shall be epoxy coated.
2. See Sht. S-12 of S-34 for superstructure details.
3. See Sht. S-13 of S-34 for parapet reinforcement and bill of material.

| REVISIONS | |
|-----------|------|
| NAME | DATE |
| | |
| | |
| | |
| | |
| | |
| | |
| | |
| | |
| | |

SHT. S-11 OF S-34

ILLINOIS DEPARTMENT OF TRANSPORTATION
 IL ROUTE 68 OVER UPRR
 F.A.P. ROUTE 343 SECTION 70D-Y-B-R
 COOK COUNTY STATION 9+900.324
 STRUCTURE NO. 016-2732

DECK CROSS SECTION

DESIGNED: BTO DRAWN: BTO
 DATE: 02/07 CHECKED: JAN CHECKED: JAN

Addendum #2 2/15/07