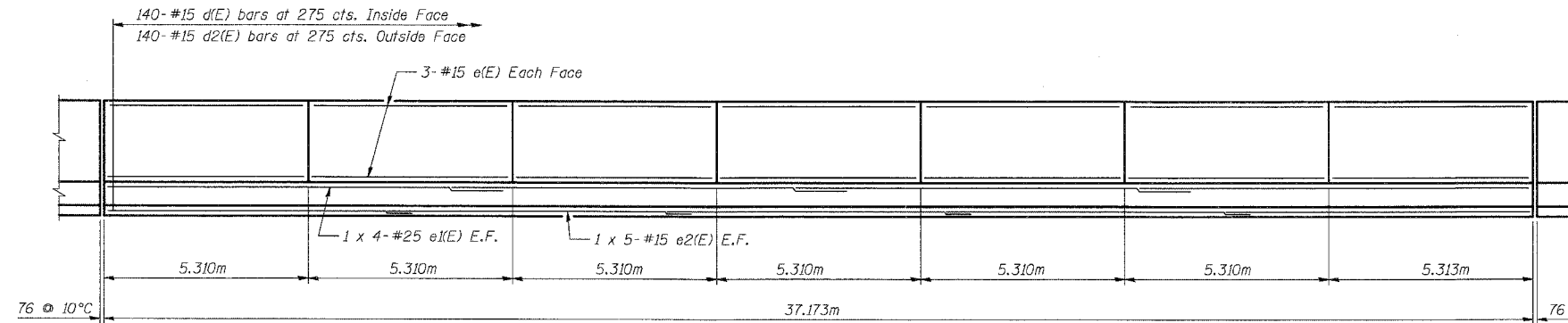
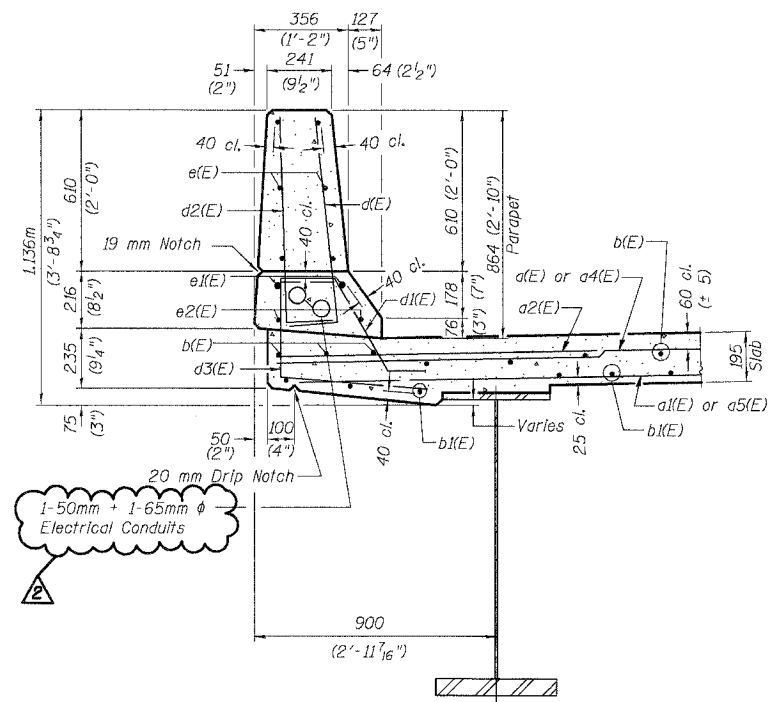


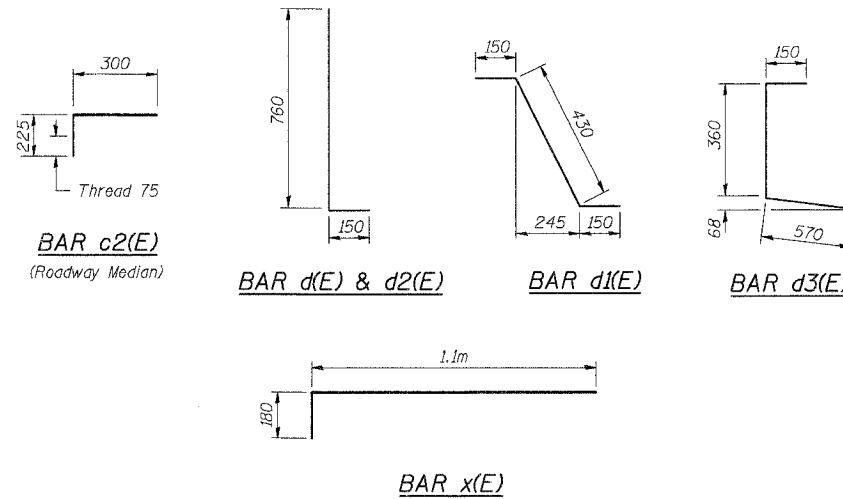
F.A.P. RTE.	SECTION	COUNTY	TOTAL SHEETS	SHEET NO.
343	700-Y-B-R	COOK	283	167
STA.	TO STA.			
FED. ROAD DIST. NO.	ILLINOIS	FED. AID PROJECT		
CONTRACT NO. 62897				



**INSIDE ELEVATION OF PARAPET**

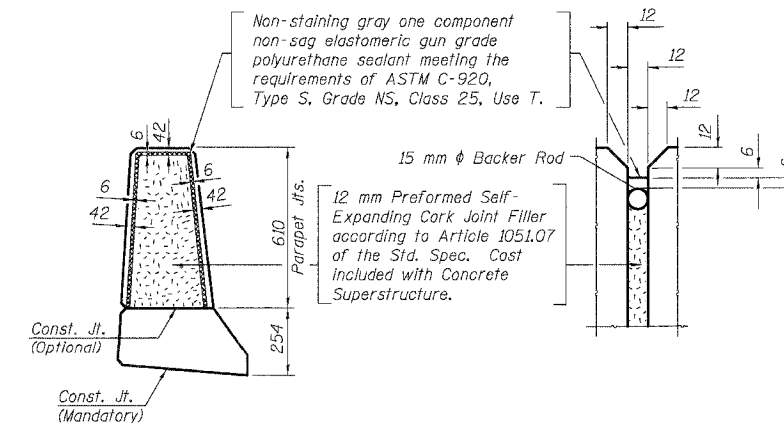


**SECTION THRU PARAPET**



**SUPERSTRUCTURE  
BILL OF MATERIAL**

Bar	No.	Size	Length (m)	Shape
a1(E)	618	15	6.700	—
a2(E)	310	20	1.400	—
a3(E)	8	15	8.160	—
a4(E)	618	15	7.420	—
a5(E)	618	15	5.160	—
a6(E)	8	15	9.010	—
a7(E)	32	15	0.450	—
a8(E)	8	15	0.600	—
b(E)	376	15	9.750	—
b1(E)	480	15	7.930	—
b2(E)	76	15	9.920	—
c1(E)	66	15	4.620	—
c2(E)	248	15	0.525	—
c3(E)	69	15	5.350	—
d(E)	280	15	0.910	—
d1(E)	272	15	0.730	—
d2(E)	280	15	0.910	—
d3(E)	272	15	1.080	—
e(E)	84	15	5.230	—
e1(E)	16	25	10.260	—
e2(E)	20	15	8.080	—
x(E)	176	20	1.280	—
Reinforcement Bars, Epoxy Coated			Kg	42.390
Concrete Superstructure			Cu M	303.3



**PARAPET JOINT DETAILS**

**NOTES:**

1. Reinforcement bars designated (E) shall be epoxy coated.
2. All Expansion Anchors shall be Epoxy Coated and included in the cost of "Reinforcement Bars, Epoxy Coated".

**MIN. BAR LAP**

#15 bar = 640  
#25 bar = 1.320m

SHT. S-13 OF S-34

REVISIONS	NAME	DATE

ILLINOIS DEPARTMENT OF TRANSPORTATION  
IL ROUTE 68 OVER UPRR  
F.A.P. ROUTE 343 SECTION 700-Y-B-R  
COOK COUNTY STATION 9+900.324  
STRUCTURE NO. 016-2732  
PARAPET ELEVATION, DECK DETAILS, & B.O.M.  
DESIGNED: BTO  
DRAWN: BTO  
DATE: 02/07  
CHECKED: JAN  
CHECKED: JAN

**Addendum #2 2/15/07**