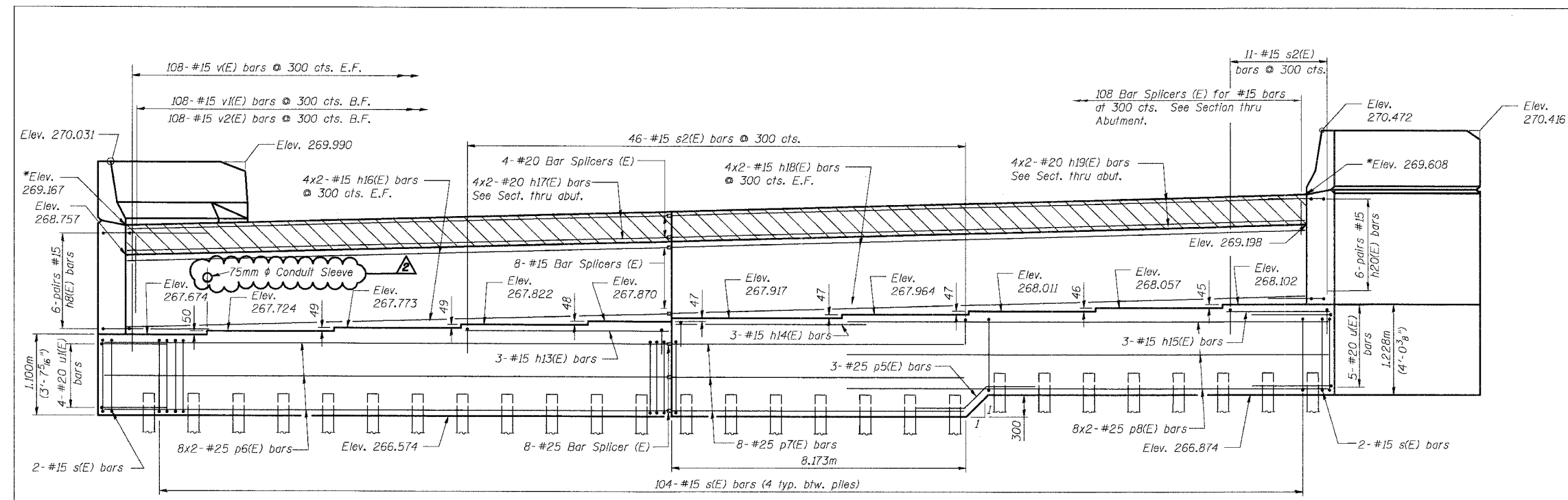


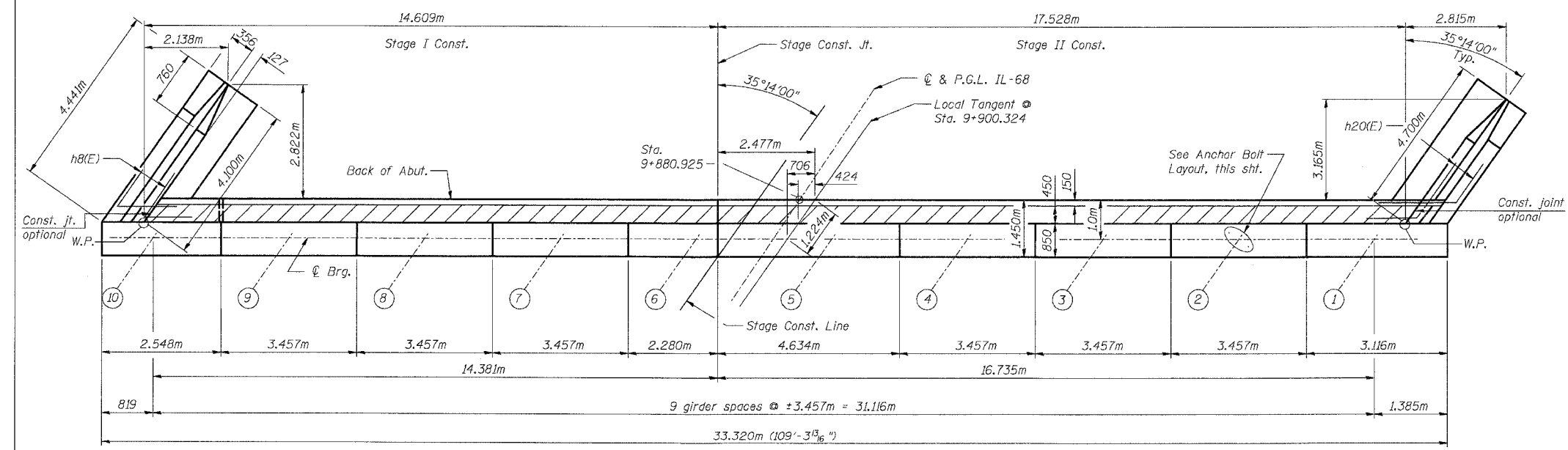
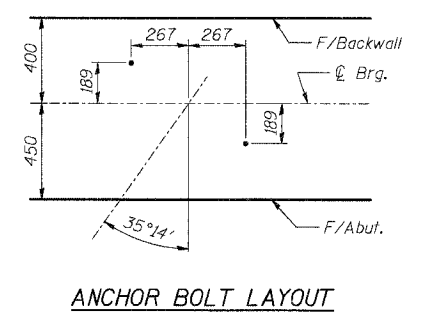
F.A.P. RTE.	SECTION	COUNTY	TOTAL SHEETS	SHEET NO.
343	700-Y-B-R	COOK	283	179
STA.		TO STA.		
FED. ROAD DIST. NO.		ILLINOIS FED. AID PROJECT		
CONTRACT NO. 62897				



*At Front Face of hatch block

MIN. BAR LAP

#15 Bars	= 640
#20 Bars	= 790
#25 Bars	= 1.320m



- NOTES:**
- Hatched area to be poured after superstructure forms have been removed.
 - Space reinforcement in cap to miss anchor bolts.
 - Pour steps monolithically with cap.
 - Reinforcement bars designated (E) shall be epoxy coated.
 - Bars indicated thus 4x2-#15 etc. Indicates 4 lines of bars with 2 lengths per line.
 - For anchor bolt details, see sht. S-21 of S-34.

SHT. S-25 OF S-34

REVISIONS	
NAME	DATE

ILLINOIS DEPARTMENT OF TRANSPORTATION
 IL ROUTE 68 OVER UPRR
 F.A.P. ROUTE 343 SECTION 700-Y-B-R
 COOK COUNTY STATION 9+900.324
 STRUCTURE NO. 016-2732
WEST ABUTMENT PLAN & ELEVATION
 DESIGNED: BTO DRAWN: BTO
 DATE: 02/07 CHECKED: JAN CHECKED: JAN

▲ Addendum #2 2/15/07

I:\Projects\2007\2715\2715.dwg 2/15/07 3:15:35 PM