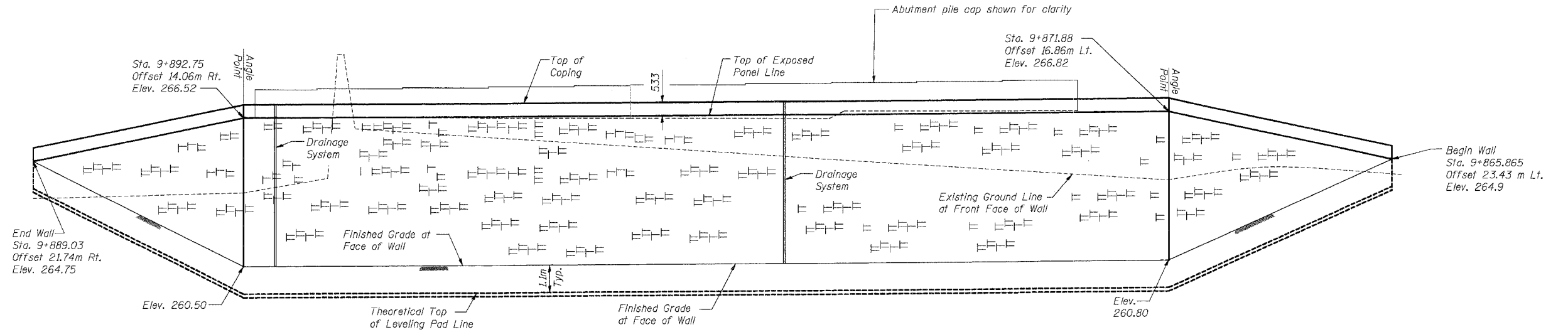
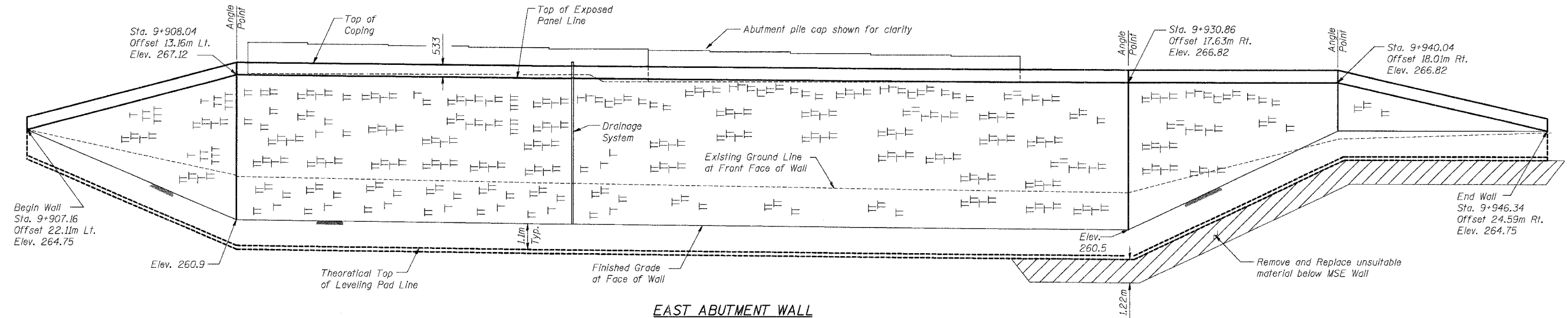


F.A.P. RTE.	SECTION	COUNTY	TOTAL SHEETS	SHEET NO.
343	70D-Y-B-R	COOK	283	182
STA.	TO STA.			
FED. ROAD DIST. NO.	ILLINOIS	FED. AID PROJECT		
CONTRACT NO. 62897				



WEST ABUTMENT WALL
(Unfolded Elevation View)

Stationing and Offsets from @ IL-68.



EAST ABUTMENT WALL
(Unfolded Elevation View)

BILL OF MATERIAL

Item	Unit	Total
Mechanically Stabilized Earth Retaining Wall	SQ M	726

NOTES:

Stationing and Offsets from @ IL-68.
 For Plan of Mechanically Stabilized Earth Retaining Walls see sheet S-01 of S-34.
 For Section Through MSE Retaining Walls see sheet S-02 of S-34.
 Bearing Capacity of soil below MSE Wall is 215 kPa with a corresponding Factor of Safety of 2.5.

Addendum #2 2/15/07

REVISIONS	
NAME	DATE

SHT. S-28 OF S-34

ILLINOIS DEPARTMENT OF TRANSPORTATION
 IL ROUTE 68 OVER UPRR
 F.A.P. ROUTE 343 SECTION 70D-Y-B-R
 COOK COUNTY STATION 9+900.324
 STRUCTURE NO. 016-2732

MECHANICALLY STABILIZED EARTH RETAINING WALLS

DESIGNED: BTO DRAWN: BTO
 DATE: 02/07 CHECKED: JAN CHECKED: JAN