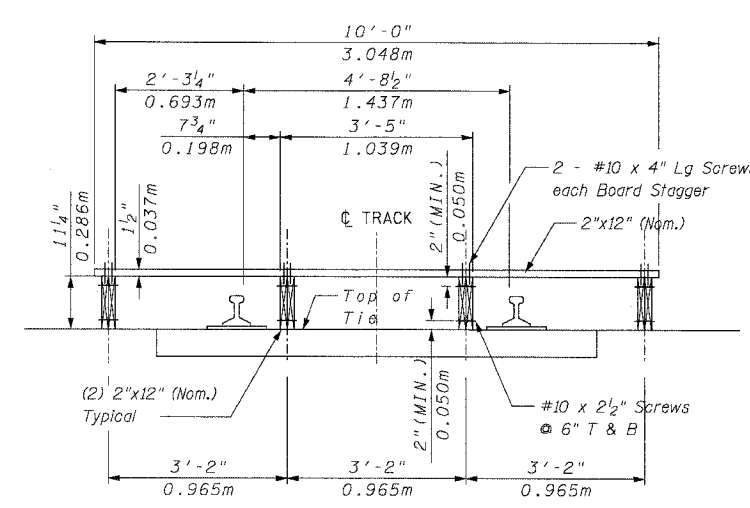
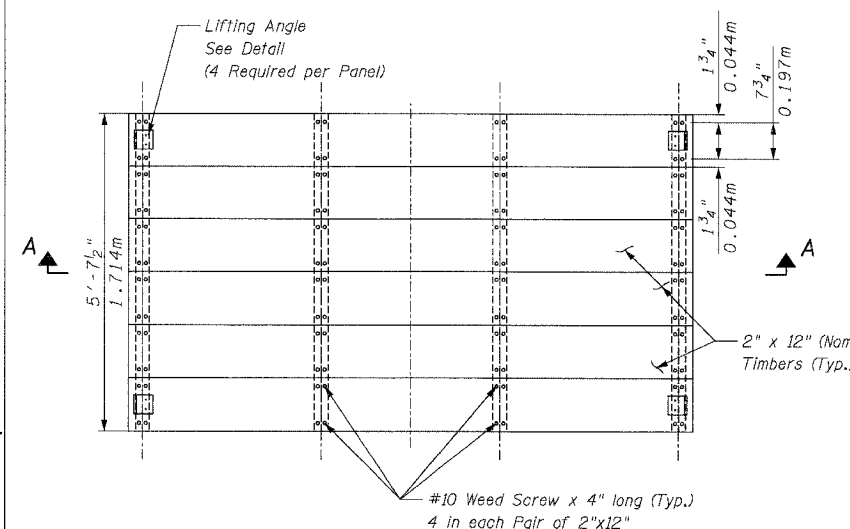
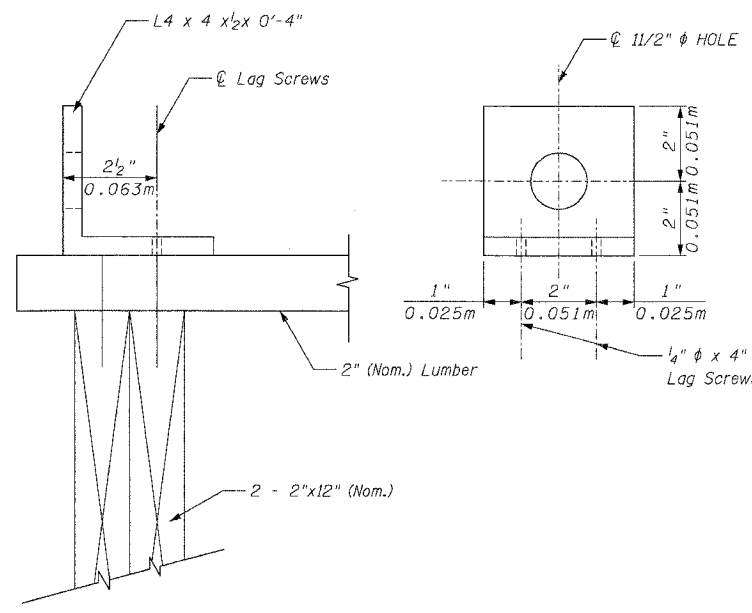


F.A.P. RTE.	SECTION	COUNTY	TOTAL SHEETS	SHEET NO.
343	700-Y-B-R	COOK	283	185A
STA.	TO STA.			
FED. ROAD DIST. NO.	ILLINOIS	FED. AID PROJECT		

CONTRACT NO. 62897



SECTION A-A

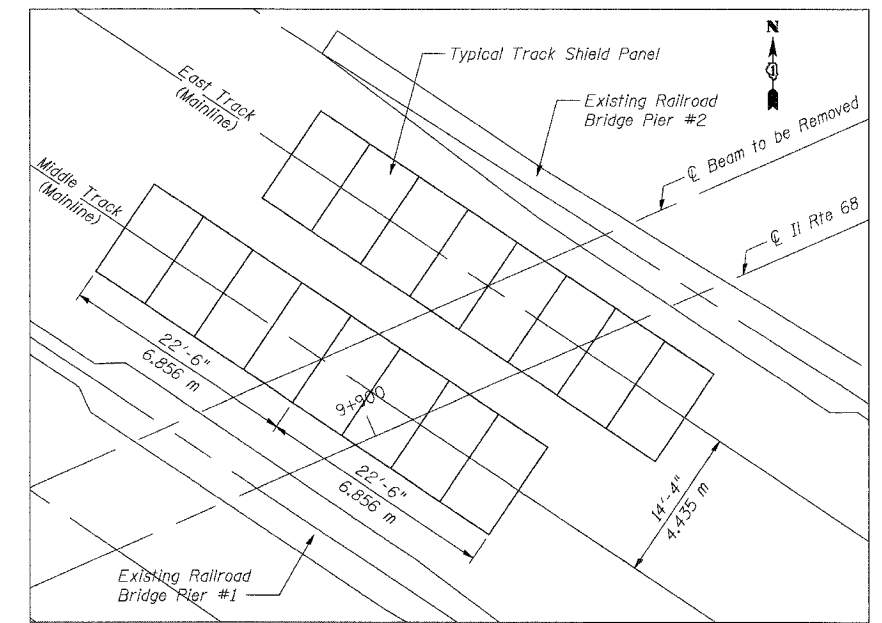


TRACK SHIELD PANEL

16 Required

WT. OF TRACK SHIELD

2x12x5'-7 1/2"x8' = 3.52 PDF x 5.63' x 8	= 158.4 Lb.
2x12x10'-0"x6' = 3.52 PDF x 10.0' x 6	= 211.2 Lb.
L4x4x1/2x4=12.8 PDF x 0.25 x 4	= 12.8 Lb.
48 Wood Screws x 2 1/2"	= 4.0 Lb.
48 Wood Screws x 4"	= 8.0 Lb.
Approx. 394.4 Lb.	
Use 400.0 Lb.	



PLAN

NOTES:

1. A flagman is required at all times during the use of a Track Shield.
2. Before removal, the shield shall be cleaned of all debris and fine material.
3. The track shield shall extend at least 20 feet beyond the limits of demolition transverse to the edge of the bridge.
4. Longitudinal support members for the shield shall not extend above the top of rail when the shield is removed. blocking from the top of rail to the bottom of the shield may be attached to the shield. Remaining timbers shall be anchored.
5. For train passage, The rubble shall be removed to a minimum of 8' 6" from the nearest rail and to an elevation no higher than the top of rail.
6. At the end of the day, the rubble shall be removed completely to a minimum of 10' 0" from the nearest rail and down to the original grade.
7. Care shall be taken not to place metal across the track rails. Railroad connections are sent through the rails and will be disrupted by a short between the rails.
8. Lumber shall be Southern Pine, No. 1 or equivalent.

SHT. S-32 OF S-34

REVISIONS	
NAME	DATE

ILLINOIS DEPARTMENT OF TRANSPORTATION
 IL ROUTE 68 OVER UPRR
 F.A.P. ROUTE 343 SECTION 700-Y-B-R
 COOK COUNTY STATION 9+900.324
 STRUCTURE NO. 016-2732
TRACK SHIELD DETAILS
 DESIGNED: RLC DRAWN: GH
 DATE: 02/07 CHECKED: JAN CHECKED: RLC

Addendum #2 2/15/07