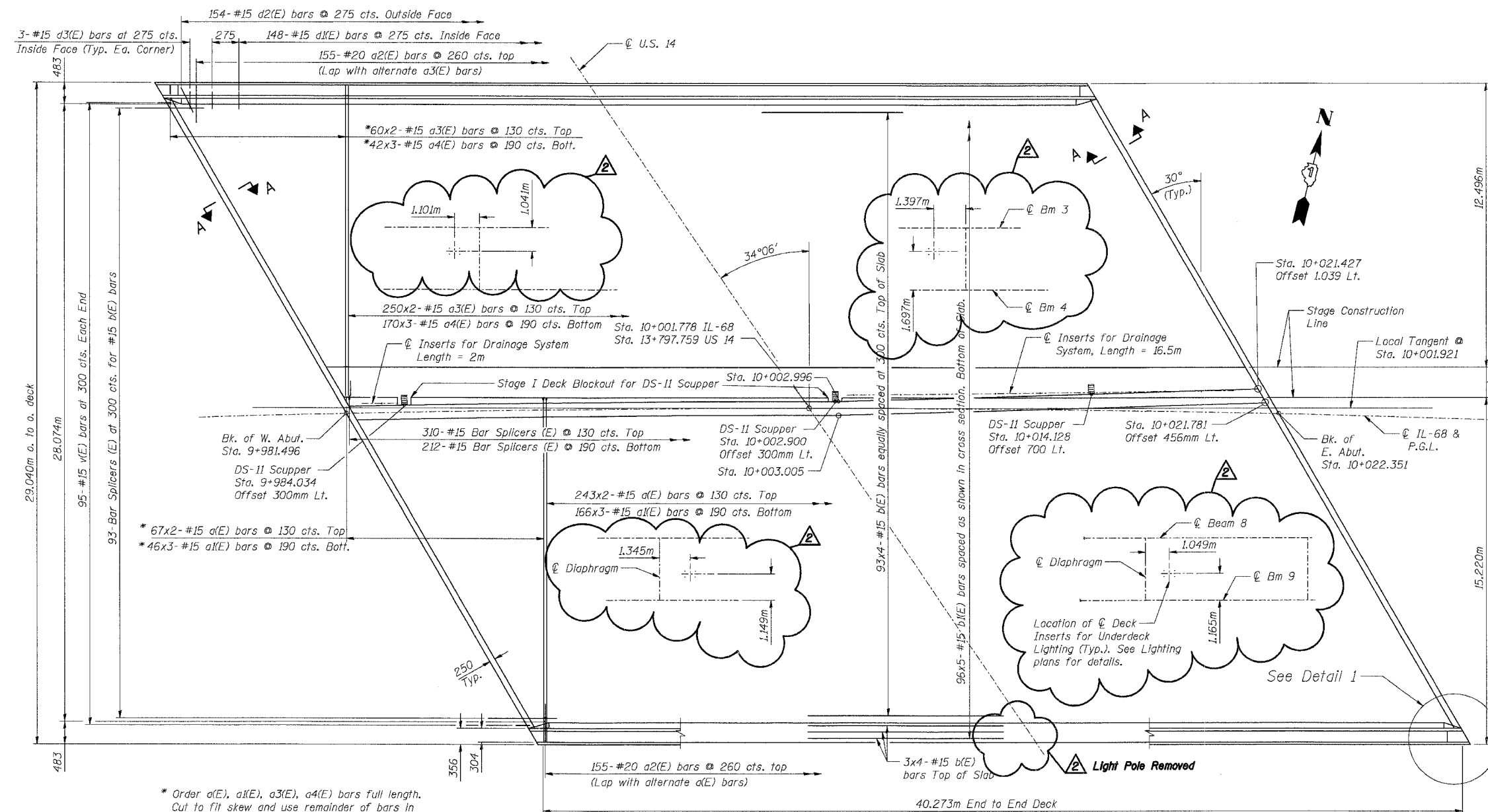
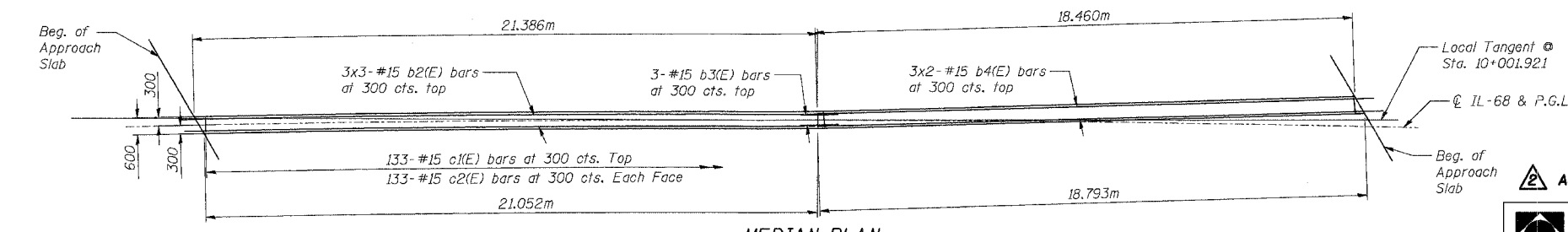


F.A.P. RTE.	SECTION	COUNTY	TOTAL SHEETS	SHEET NO.
343	70HB-R-1	COOK	283	195
STA.	TO STA.			
FED. ROAD DIST. NO.	ILLINOIS	FED. AID PROJECT		

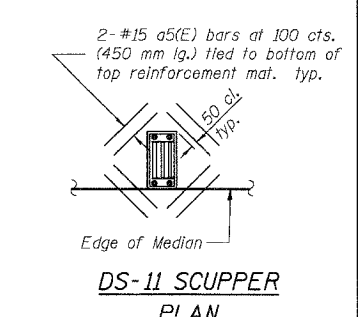
CONTRACT NO. 62897



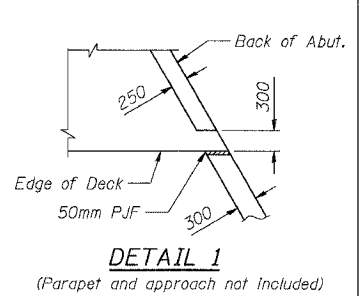
DECK PLAN



MEDIAN PLAN



DS-II SCUPPER PLAN



DETAIL 1

NOTES:

1. Bars Indicated thus 93x4-#15 etc. indicates 93 lines of bars with 4 lengths per line.
 2. Reinforcing Bar designated (E) Shall be Epoxy Coated.
 3. Expansion Anchors Required at Medians See Sht. S-11 of S-27 for Superimposed Median Details.
 4. For Sections A-A, see Sht. S-12 of S-27.
- Minimum Lap
 #15 Bars - 640
 #20 Bars - 790

SHT. S-10 OF S-27

REVISIONS	NAME	DATE

STV Incorporated
 Registered/Architect/Plumber/Construction Manager
 200 W. Monroe Street, Suite 1650
 Chicago, IL 60606-6915
 312.233.0655, FAX 312.593.0661

ILLINOIS DEPARTMENT OF TRANSPORTATION
 IL ROUTE 68 OVER US ROUTE 14
 F.A.P. ROUTE 343 SECTION 70HB-R-1
 COOK COUNTY STATION 10+001.778
 STRUCTURE NO. 016-2861

DESIGNED: BTO DRAWN: BTO
 CHECKED: JAN CHECKED: JAN

DATE: 02/07