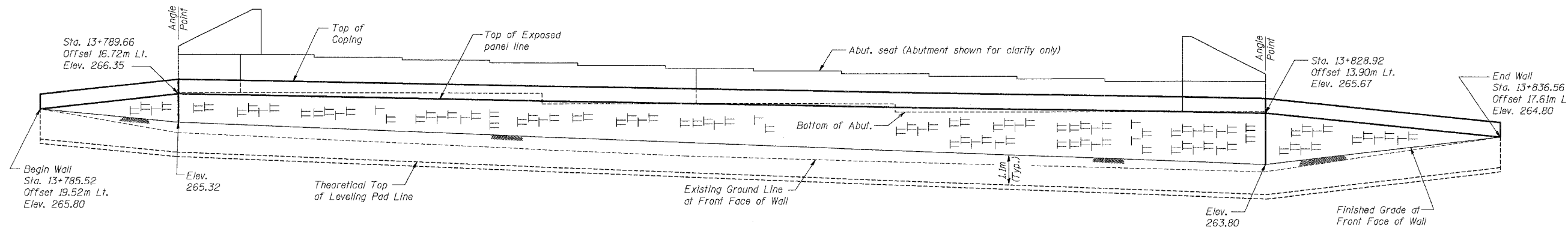
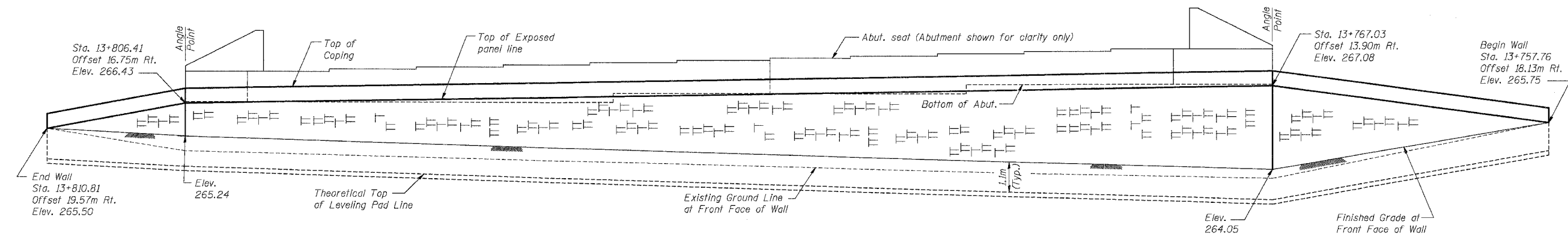


F.A.P. SECTION	COUNTY	TOTAL SHEETS	SHEET NO.
343 70HB-R-1	COOK	283	209
STA.	TO STA.		
FED. ROAD DIST. NO.	ILLINOIS	FED. AID PROJECT	
CONTRACT NO. 62897			

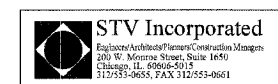


NOTES:
 Stationing and Offsets from \odot US 14.
 For Plan of Mechanically Stabilized Earth Retaining Wall see sheet S-01 of S-27.
 For Section Through MSE Retaining Wall see sheet S-02 of S-27.
 Bearing Capacity of soil below MSE wall is 215 kPa with a corresponding factor of Safety of 2.5.
 SHT. S-24 OF S-27

BILL OF MATERIAL

Item	Unit	Total
Mechanically Stabilized Earth Retaining Wall	SQ M	287

Addendum #2 2/15/07



REVISIONS		ILLINOIS DEPARTMENT OF TRANSPORTATION IL ROUTE 68 OVER US ROUTE 14 F.A.P. ROUTE 343 SECTION 70HB-R-1 COOK COUNTY STATION 10+001.778 STRUCTURE NO. 016-2861 MECHANICALLY STABILIZED EARTH RETAINING WALLS
NAME	DATE	
		DESIGNED: BTO DRAWN: BTO DATE: 02/07 CHECKED: JAN CHECKED: JAN

\\sbs\dshare\dwg\2007\02\15\2007_11:27 PM