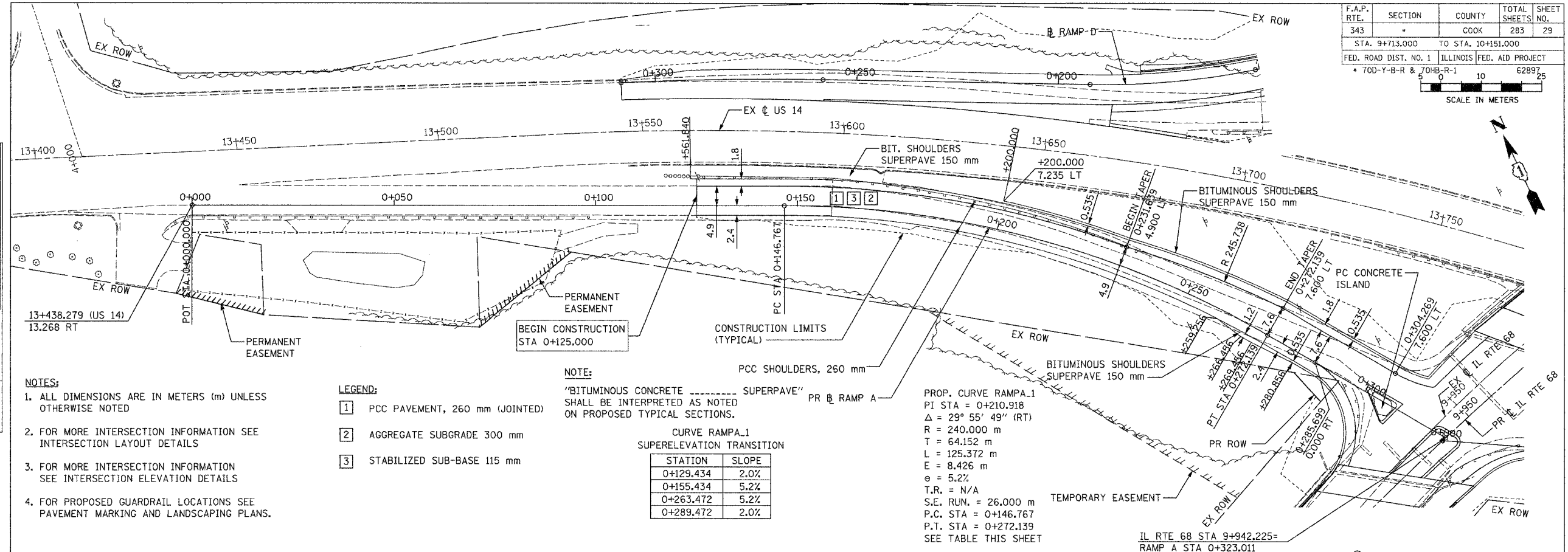


F.A.P. RTE.	SECTION	COUNTY	TOTAL SHEETS	SHEET NO.
343	*	COOK	283	29
STA. 9+713.000		TO STA. 10+151.000		
FED. ROAD DIST. NO. 1		ILLINOIS FED. AID PROJECT		
* 70D-Y-B-R & 70H-B-R-1		62897		25

SCALE IN METERS



- NOTES:**
1. ALL DIMENSIONS ARE IN METERS (m) UNLESS OTHERWISE NOTED
 2. FOR MORE INTERSECTION INFORMATION SEE INTERSECTION LAYOUT DETAILS
 3. FOR MORE INTERSECTION INFORMATION SEE INTERSECTION ELEVATION DETAILS
 4. FOR PROPOSED GUARDRAIL LOCATIONS SEE PAVEMENT MARKING AND LANDSCAPING PLANS.

- LEGEND:**
- 1 PCC PAVEMENT, 260 mm (JOINTED)
 - 2 AGGREGATE SUBGRADE 300 mm
 - 3 STABILIZED SUB-BASE 115 mm

NOTE:
"BITUMINOUS CONCRETE SUPERPAVE" PR RAMP A SHALL BE INTERPRETED AS NOTED ON PROPOSED TYPICAL SECTIONS.

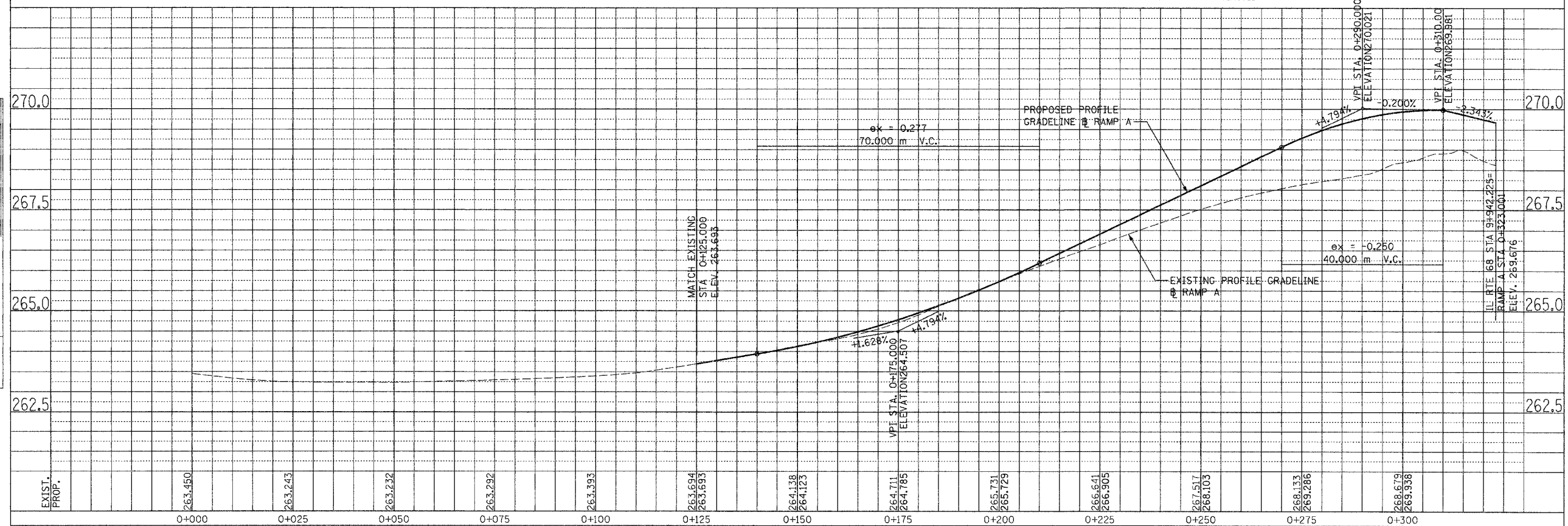
CURVE RAMP A_1 SUPERELEVATION TRANSITION

STATION	SLOPE
0+129.434	2.0%
0+155.434	5.2%
0+263.472	5.2%
0+289.472	2.0%

PROP. CURVE RAMP A_1
 PI STA = 0+210.918
 $\Delta = 29^\circ 55' 49''$ (RT)
 R = 240.000 m
 T = 64.152 m
 L = 125.372 m
 E = 8.426 m
 $e = 5.2\%$
 T.R. = N/A
 S.E. RUN. = 26.000 m
 P.C. STA = 0+146.767
 P.T. STA = 0+272.139
 SEE TABLE THIS SHEET

PLAN	SURVEYED	DATE
	PLOTTED	
	NOTE BOOK ALIGNED CHECKED	
	NO. _____	
	CADD FILE NAME	

PROFILE	SURVEYED	DATE
	PLOTTED	
	NOTE BOOK GRADES CHECKED	
	NO. _____	
	STRUCTURE NOTATIONS CHKD	



SCALE: H= 1:500, V=1:50 RAMP A-PROPOSED PLAN AND PROFILE -3

C:\Users\jshelton\OneDrive\Documents\11/26/2008 4:15:07 PM