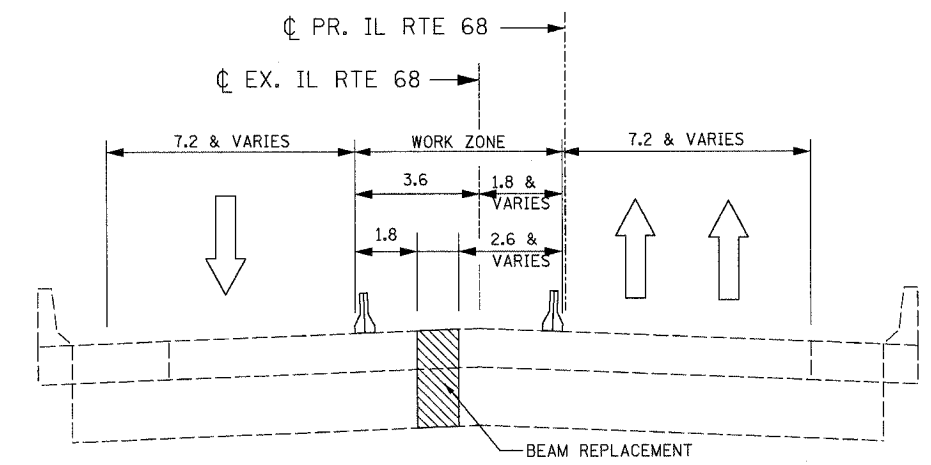
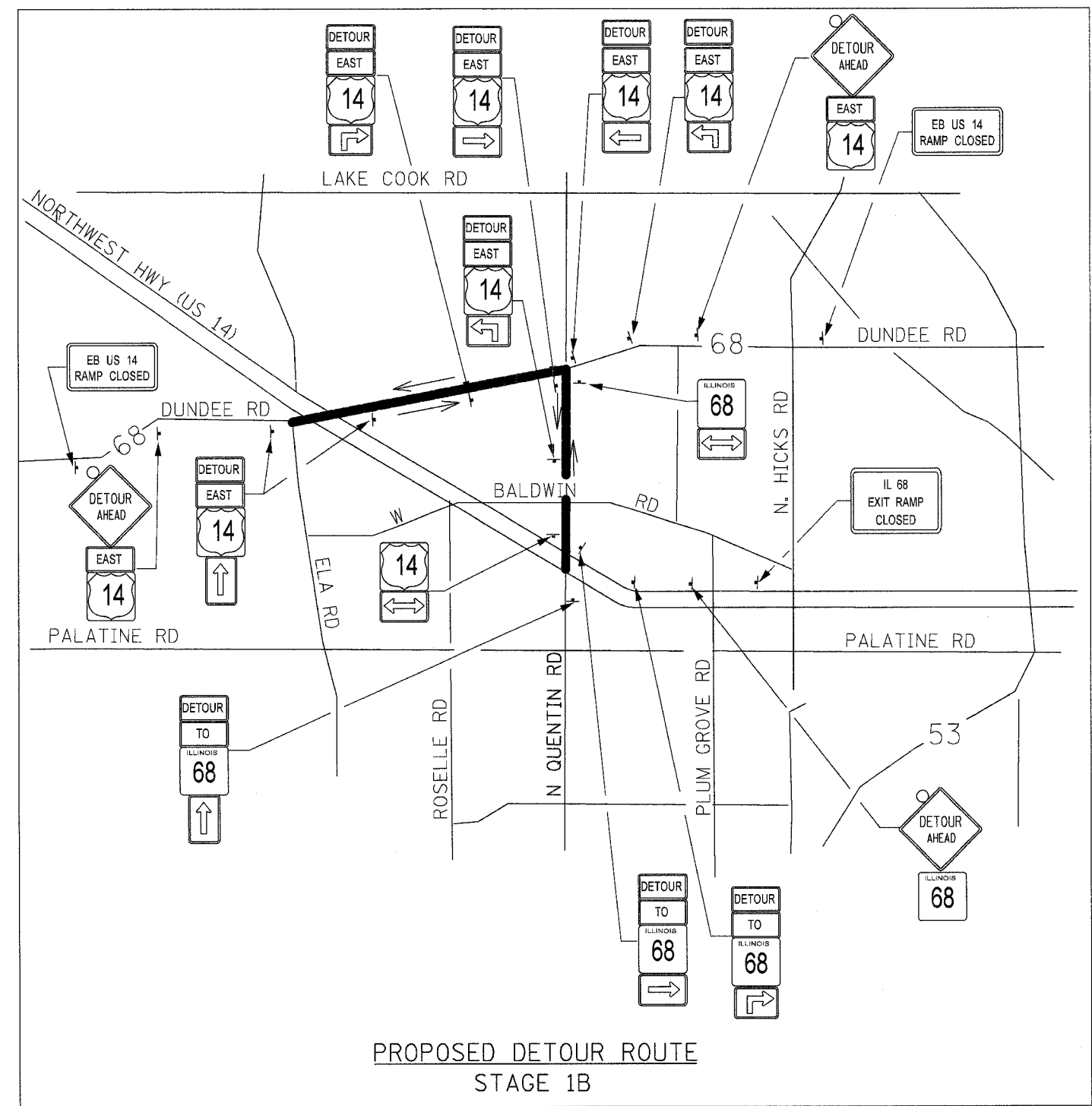
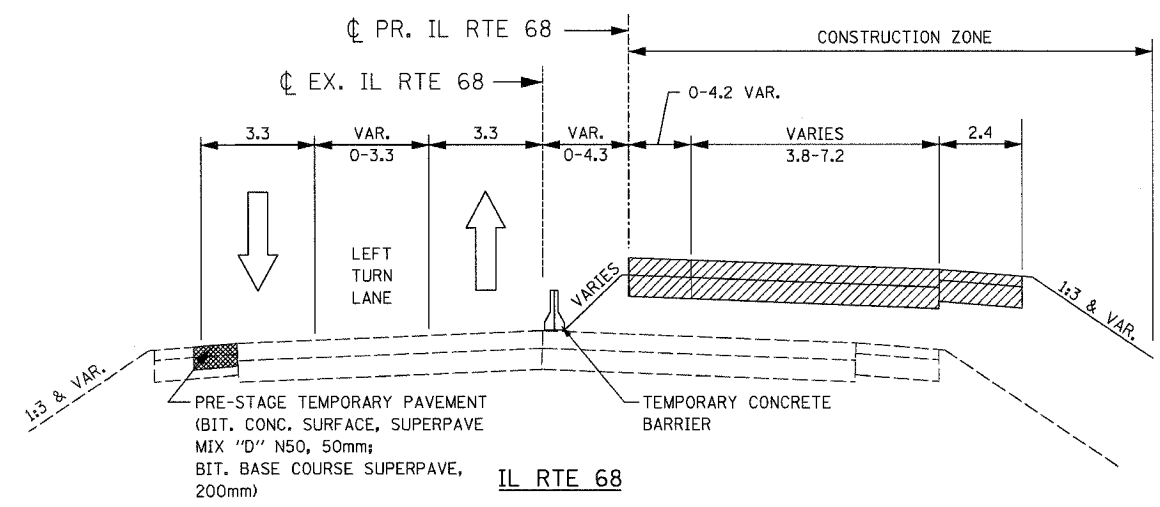


F.A.P. RTE.	SECTION	COUNTY	TOTAL SHEETS	SHEET NO.
343		COOK	283	36
STA. 9+713.000		TO STA. 10+151.000		
FED. ROAD DIST. NO. 1		ILLINOIS		FED. AID PROJECT
• 70D-Y-B-R & 70HB-R-1		62897		



IL RTE 68 (UPRR BRIDGE)
PRE-STAGE - CONCRETE BEAM REPLACEMENT



IL RTE 68
STAGE 1A AND 1B

- NOTES:
1. ALL DIMENSION ARE IN METERS (m) UNLESS OTHERWISE NOTED.
 2. TYPICAL SECTIONS REFLECT APPROXIMATE LIMITS FOR EXISTING TRAFFIC AND CONSTRUCTION ZONE RELATIONSHIPS ONLY. SEE MOT PLANS AND NOTES FOR ADDITIONAL DETAILS.
 3. FOR MORE CONCRETE BEAM REPLACEMENT INFORMATION SEE STRUCTURAL PLANS.

- LEGEND:
- CONSTRUCTION FROM PREVIOUS STAGE
 - PROPOSED CONSTRUCTION DURING STAGE
 - BARRICADE TYPE II

DETOUR NOTES:

DURING STAGE 1B CONSTRUCTION, THE SOUTH RAMPS, RAMP B (SB-ON) AND RAMP C (NB-OFF), WILL BE CLOSED TO TRAFFIC. TRAFFIC WILL BE DETOURED AS FOLLOWS: IL RTE 68 WISHING TO TRAVEL EASTBOUND ON US 14 VIA RAMP B WILL BE DIRECTED EAST ALONG IL RTE 68 TO QUENTIN ROAD, THEN SOUTH ON QUENTIN ROAD TO US 14.

WESTBOUND US 14 TRAFFIC NORMALLY EXITING ON RAMP C WILL BE REDIRECTED TO NORTHBOUND QUENTIN ROAD, AND PROCEED NORTH TO THE INTERSECTION OF QUENTIN ROAD AND IL RTE 68.

REVISIONS		ILLINOIS DEPARTMENT OF TRANSPORTATION ILLINOIS ROUTE 68 MAINTANANCE OF TRAFFIC TYPICAL SECTIONS PRESTAGE, STAGE 1A AND 1B DETOUR ROUTE STAGE 1B
NAME	DATE	
		SCALE NTS DATE OCTOBER, 2006

DRAWN BY RDT
CHECKED BY PK