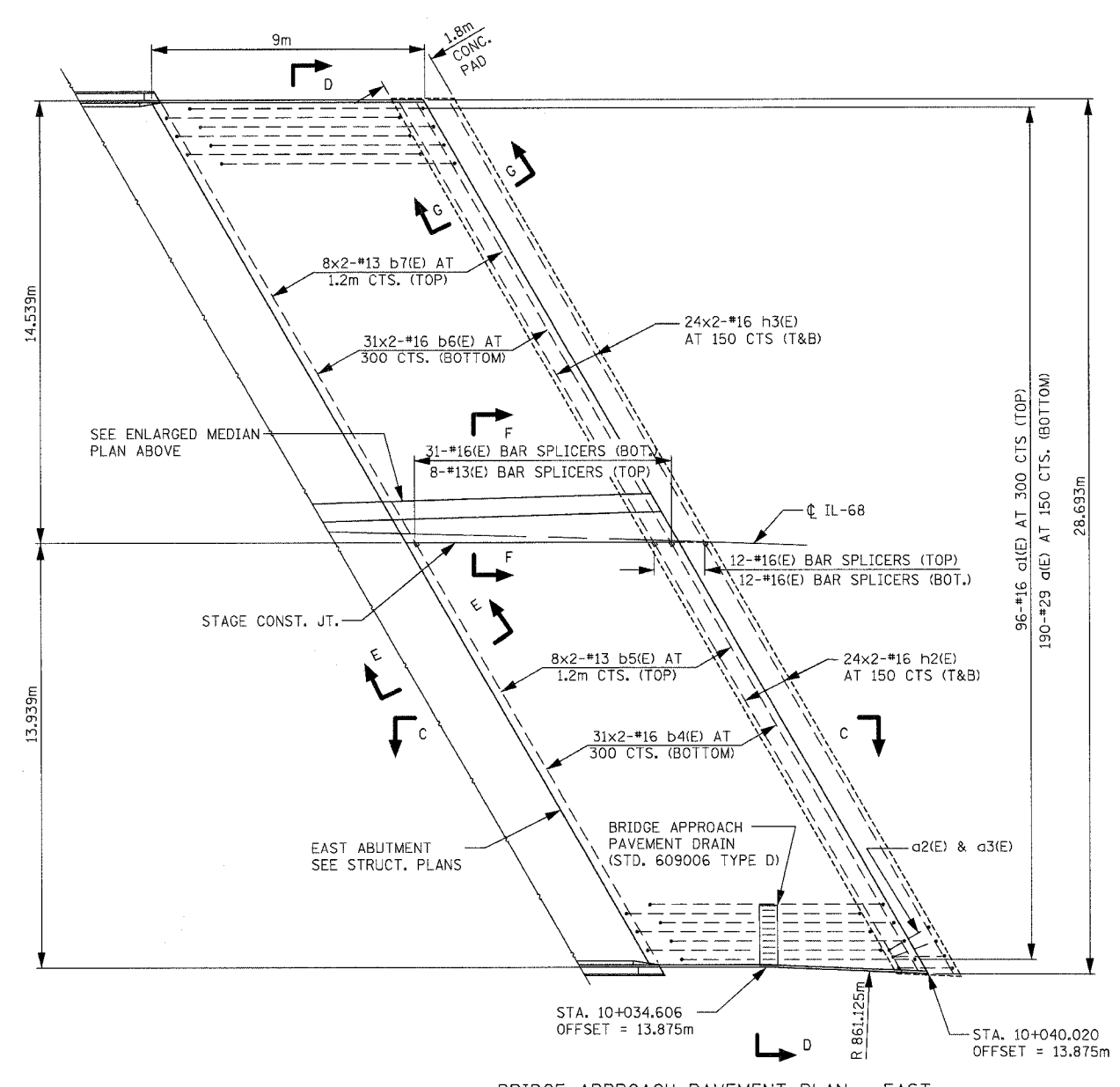
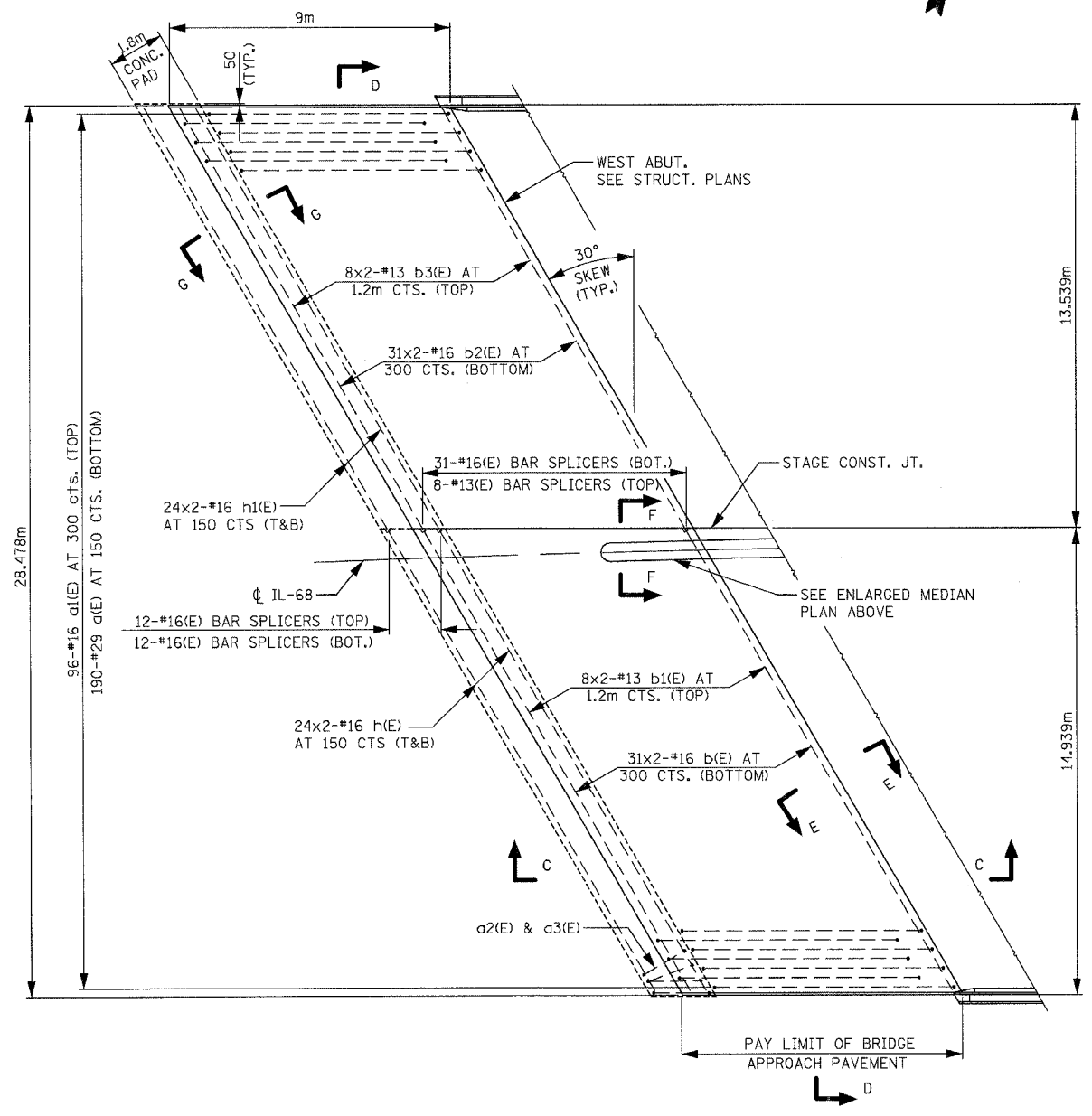
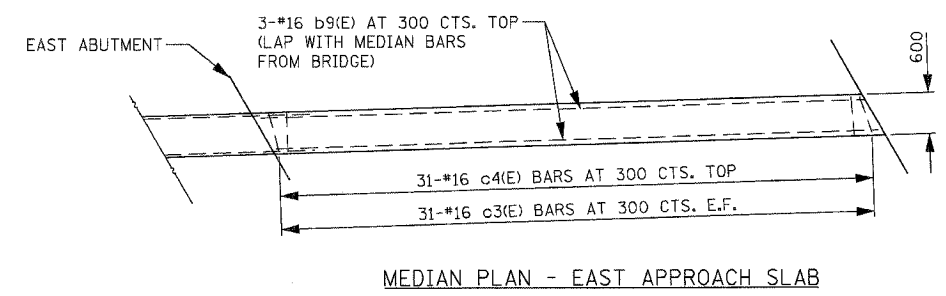
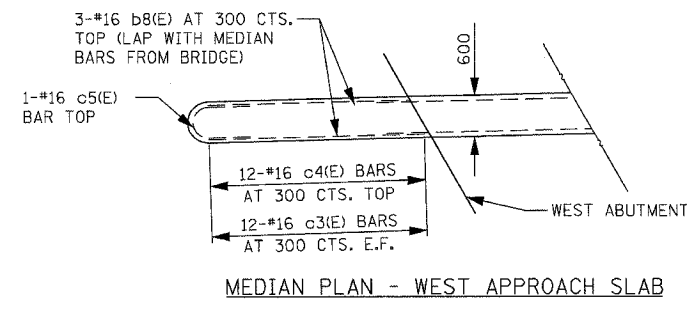


F.A.P. RTE.	SECTION	COUNTY	TOTAL SHEETS	SHEET NO.
343	*	COOK	283	101
STA. 9+713.000 TO STA. 10+151.000				
FED. ROAD DIST. NO. 1 ILLINOIS FED. AID PROJECT				
* 70D-Y-B-R & 70HB-R-1 62897				



GENERAL NOTES

- SEE STANDARD 421001 FOR REINFORCEMENT DETAILS NOT SHOWN.
- SEE STANDARD 420001 FOR JOINT DETAILS NOT SHOWN.
- ALL DIMENSIONS ARE IN MILLIMETERS UNLESS OTHERWISE SHOWN.
- BARS INDICATED THUS 31x2 - #16 ETC. INDICATES 31 LINES OF BARS WITH 2 LENGTHS PER LINE.
- E.F. = EACH FACE

MIN. BAR LAP

- #13 = 450
- #16 = 640

REVISIONS	
NAME	DATE

ILLINOIS DEPARTMENT OF TRANSPORTATION
ILLINOIS ROUTE 68
BRIDGE APPROACH PAVEMENT (SPECIAL)
S.N. 016-2861
SCALE N.T.S.
DATE OCTOBER, 2006
DRAWN BY BTO
CHECKED BY JAN