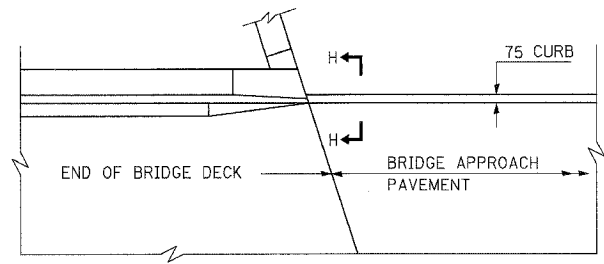
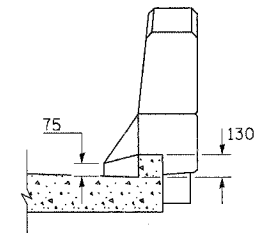


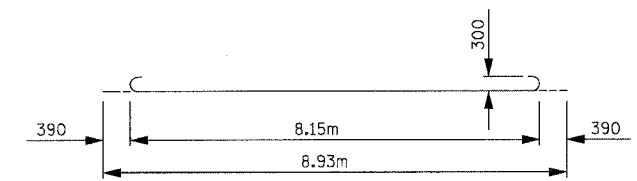
F.A.P. RTE.	SECTION	COUNTY	TOTAL SHEETS	SHEET NO.
343	*	COOK	283	103
STA. 9+713.000		TO STA. 10+151.000		
FED. ROAD DIST. NO. 1		ILLINOIS FED. AID PROJECT		
* 700-Y-B-R & 70HB-R-1		62897		



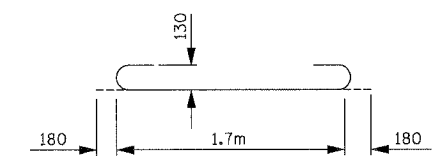
PARAPET TO CURB TRANSITION
INTEGRAL ABUTMENT



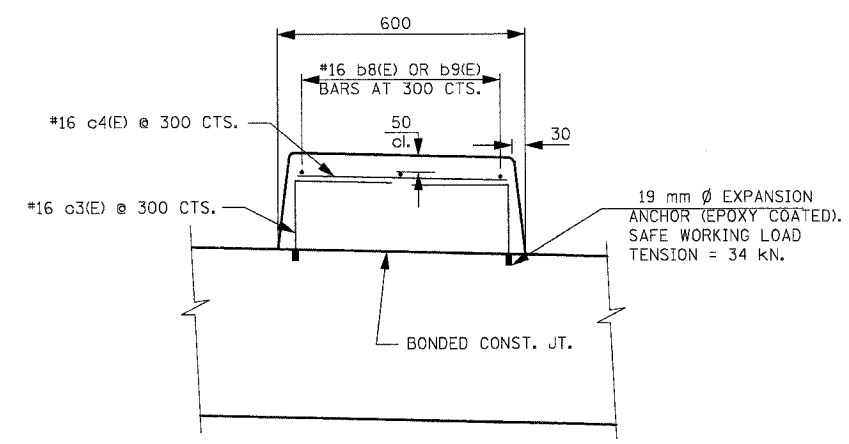
SECTION H - H



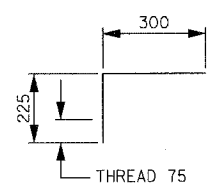
BAR a(E)



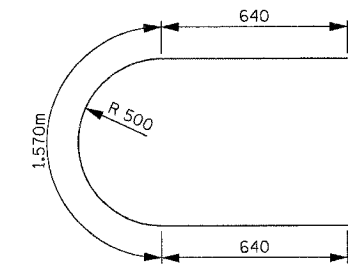
BAR a2(E)



SECTION F - F



BAR c3(E)**



BAR c5(E)

BILL OF MATERIAL

BAR	NO.	SIZE	LENGTH	SHAPE
a(E)	380	#29	8.930m	—
a1(E)	192	#16	8.850m	—
a2(E)	220	#13	2.060m	—
a3(E)	220	#13	1.700m	—
b(E)	62	#16	8.920m	—
b1(E)	16	#13	8.920m	—
b2(E)	62	#16	8.110m	—
b3(E)	16	#13	8.110m	—
b4(E)	62	#16	8.340m	—
b5(E)	16	#13	8.340m	—
b6(E)	62	#16	8.690m	—
b7(E)	16	#13	8.690m	—
b8(E)	3	#16	2.950m	—
b9(E)	3	#16	8.850m	—
c3(E)	86	#16	525	┌
c4(E)	43	#16	440	—
c5(E)	1	#16	2.850m	└
h(E)	48	#16	8.940m	—
h1(E)	48	#16	8.130m	—
h2(E)	48	#16	8.360m	—
h3(E)	48	#16	8.710m	—
BAR SPlicERS		EACH	126	
REINFORCEMENT BARS, EPOXY COATED		KG	28,090	
CONCRETE SUPERSTRUCTURES		CU M	1.6	
PREFORMED JOINT SEAL		METER	66.0	
CONCRETE PAD		SQ M	119.3	
POLYETHYLENE BOND BREAKER		SQ M	119.3	
BRIDGE APPROACH PAVEMENT (SPECIAL)		SQ M	513.1	

REINFORCEMENT BARS DESIGNATED (E) SHALL BE EPOXY COATED.

ITEMS INCLUDED IN THE COST FOR BRIDGE APPROACH PAVEMENT (SPECIAL).

** COST OF MACHINING BAR c3(E) INCLUDED WITH BRIDGE APPROACH PAVEMENT (SPECIAL).

SHT. 3 OF 3

REVISIONS		ILLINOIS DEPARTMENT OF TRANSPORTATION ILLINOIS ROUTE 68
NAME	DATE	
		BRIDGE APPROACH PAVEMENT (SPECIAL) S.N. 016-2861
SCALE N.T.S.	DATE OCTOBER, 2006	DRAWN BY BTO CHECKED BY JAN