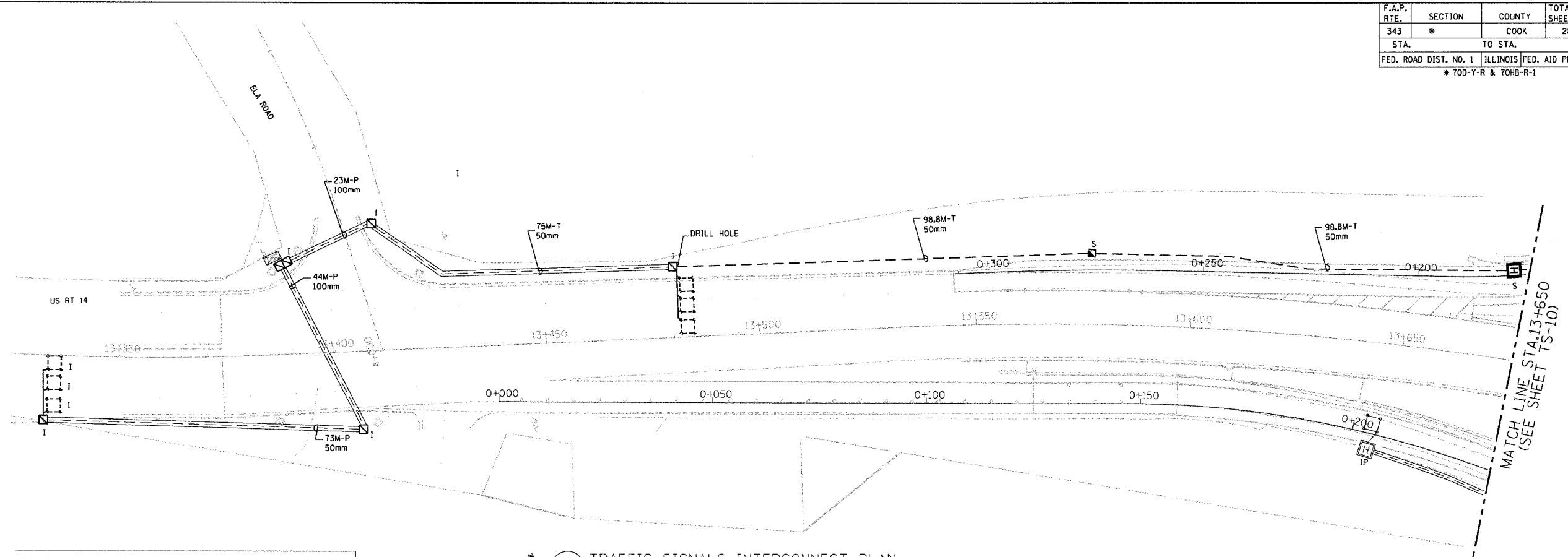
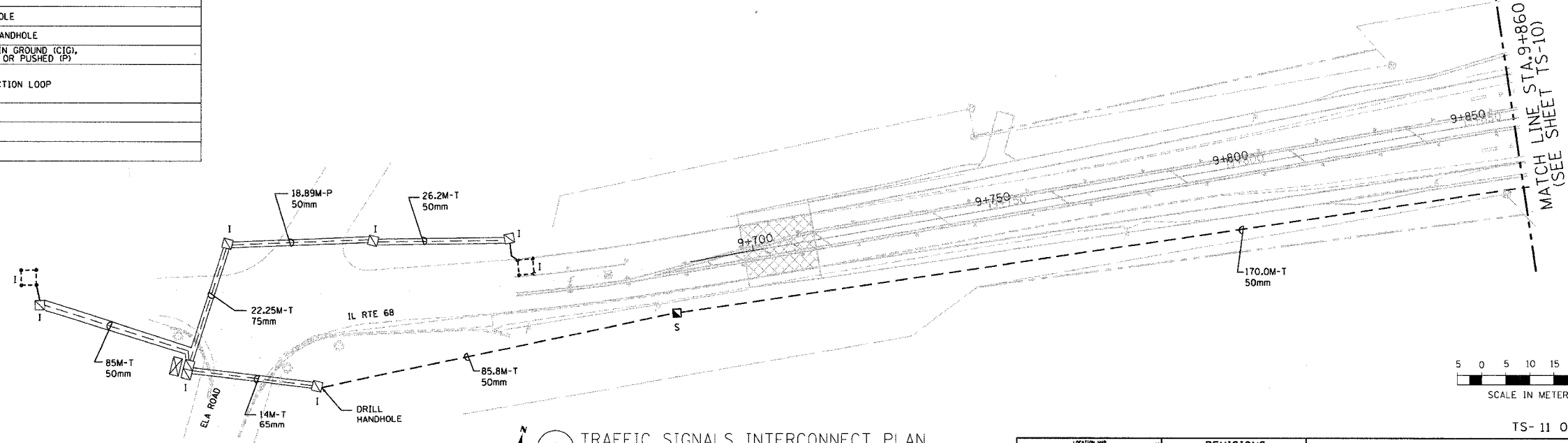


F.A.P. RTE.	SECTION	COUNTY	TOTAL SHEETS	SHEET NO.
343	*	COOK	283	123
STA.		TO STA.		
FED. ROAD DIST. NO. 1		ILLINOIS FED. AID PROJECT		
		* 70D-Y-R & 70HB-R-1 62897		

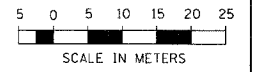


INTERCONNECT PLAN LEGEND		
EXIST.	PROP.	DESCRIPTION
[Symbol]	[Symbol]	CONTROLLER
[Symbol]	[Symbol]	HANDHOLE
[Symbol]	[Symbol]	DOUBLE HANDHOLE
[Symbol]	[Symbol]	HEAVY DUTY HANDHOLE
[Symbol]	[Symbol]	G.S. CONDUIT IN GROUND (IG), IN TRENCH (T) OR PUSHED (P)
[Symbol]	[Symbol]	VEHICLE DETECTION LOOP
	UD	UNIT DUCT
	S	SYSTEM
I	IP	INTERSECTION

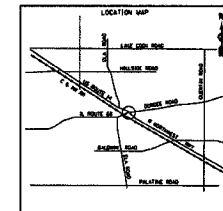
1 TRAFFIC SIGNALS INTERCONNECT PLAN
SCALE: 1 : 500



2 TRAFFIC SIGNALS INTERCONNECT PLAN
SCALE: 1 : 500



TS- 11 OF 13



REVISIONS	
NAME	DATE

ILLINOIS DEPARTMENT OF TRANSPORTATION
ILLINOIS ROUTE 68 AT U.S. ROUTE 14
TRAFFIC SIGNALS
INTERCONNECT PLAN
SHEET 2 OF 2
SCALE 1:500
DATE NOVEMBER 2006
DRAWN BY R.P.J.
DESIGNED BY D.S.
CHECKED BY A.D.O.

Rick Johns
 IDOT - District 01
 02-05-1001-STV-03 - IL 68 over US 14
 P:\02-05-1001-STV-03 - IL 68 over US 14\Working Files\Drawings\TS-11 - Cable Interconnect Plan.dgn
 11/27/2006 3:44:14 PM 500.0000 M / M.