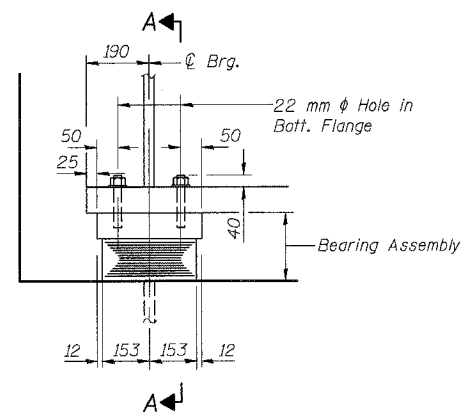
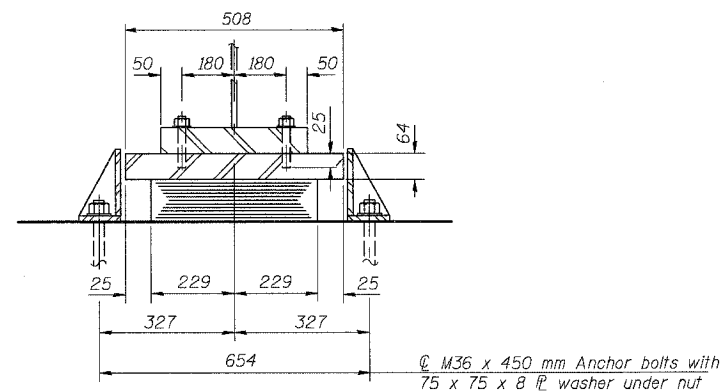


F.A.P. RTE.	SECTION	COUNTY	TOTAL SHEETS	SHEET NO.
343	700-Y-B-R	COOK	283	174
STA.		TO STA.		
FED. ROAD DIST. NO.	ILLINOIS	FED. AID PROJECT		
CONTRACT NO. 62897				

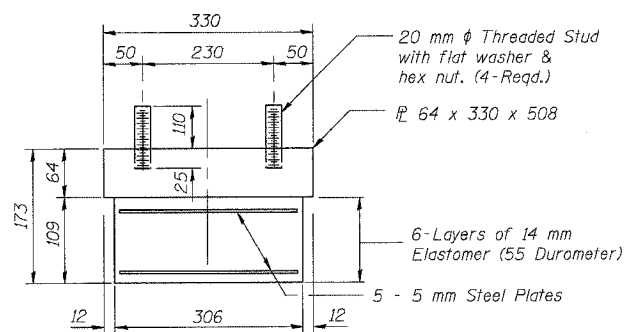


ELEVATION AT ABUT.



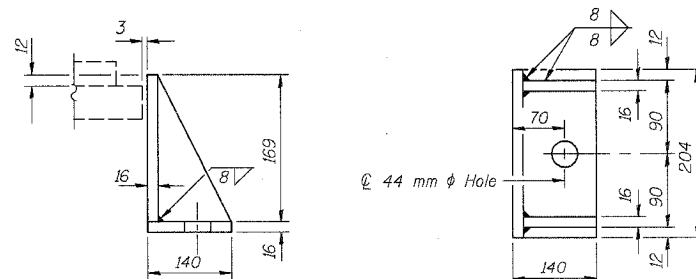
SECTION A-A

TYPE I ELASTOMERIC EXP. BRG.
(West Abutment)



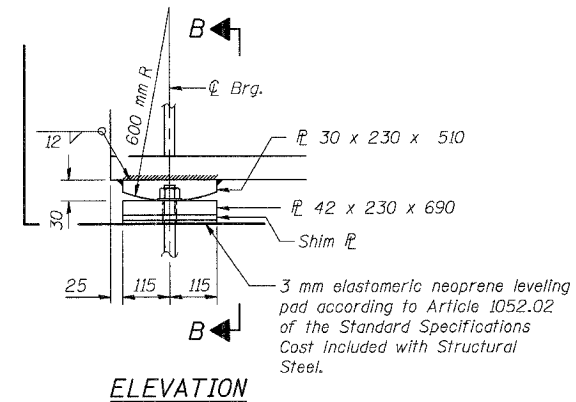
BEARING ASSEMBLY

Note: Shim plates shall not be placed under Bearing Assembly.



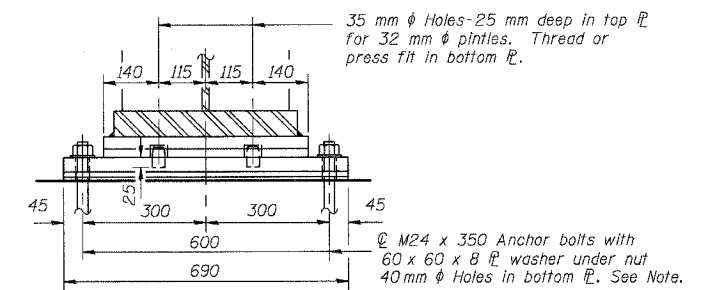
SIDE RETAINER

Equivalent rolled angle with stiffeners will be allowed in lieu of welded plates. Weight included with Structural Steel.

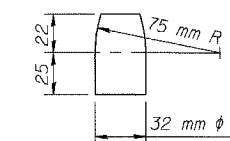


ELEVATION

FIXED BEARING
(East Abutment)



SECTION B-B



PINTLE

BEARINGS FABRICATED UNDER BEAM FABRICATION CONTRACT.

BILL OF MATERIAL

Item	Unit	Total
Erecting Elastomeric Bearing Assembly, Type I	Each	10

NOTES:

- Structural steel for bearing plates shall be AASHTO M270M, Grade 250.
- Anchor bolts at fixed bearings may be built into the masonry. See sheet S-21 of S-34 for Anchor Bolt installation.
- Estimated weight of anchors = 110 kg.

REVISIONS	
NAME	DATE

SHT. S-20 OF S-34

ILLINOIS DEPARTMENT OF TRANSPORTATION
IL ROUTE 68 OVER UPRR
F.A.P. ROUTE 343 SECTION 700-Y-B-R
COOK COUNTY STATION 9+900.324
STRUCTURE NO. 016-2732

BEARING DETAILS

DESIGNED: BTO DRAWN: BTO
CHECKED: JAN CHECKED: JAN

DATE: 10/06