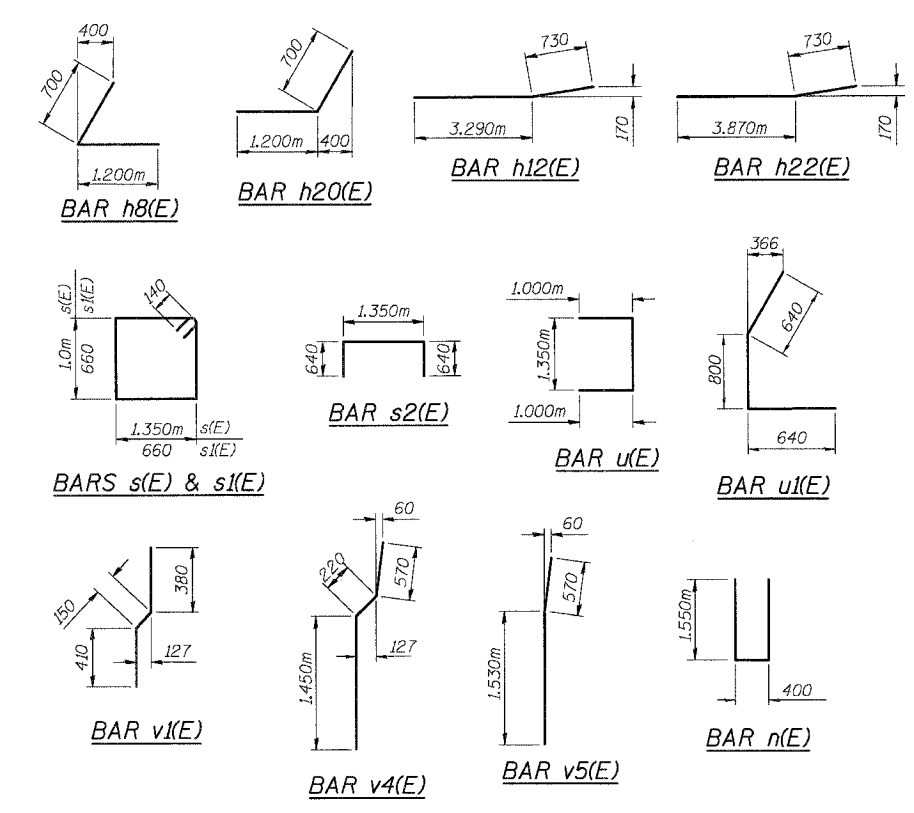
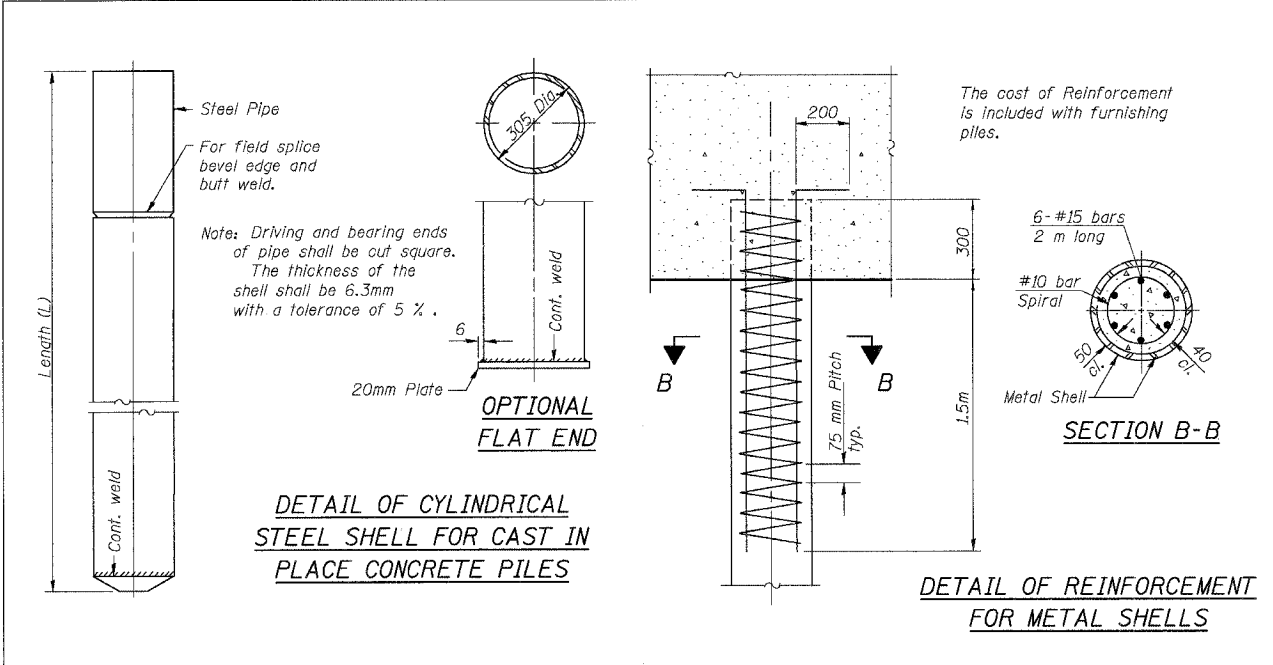
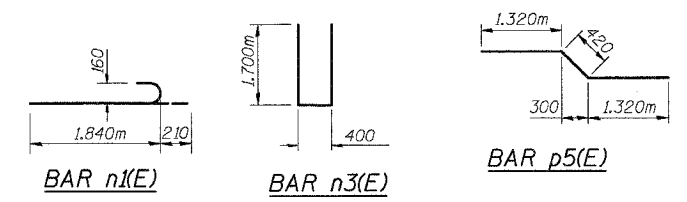


F.A.P. RTE.	SECTION	COUNTY	TOTAL SHEETS	SHEET NO.
343	70D-Y-B-R	COOK	283	180
STA.		TO STA.		
FED. ROAD DIST. NO.		ILLINOIS	FED. AID PROJECT	
CONTRACT NO. 62897				



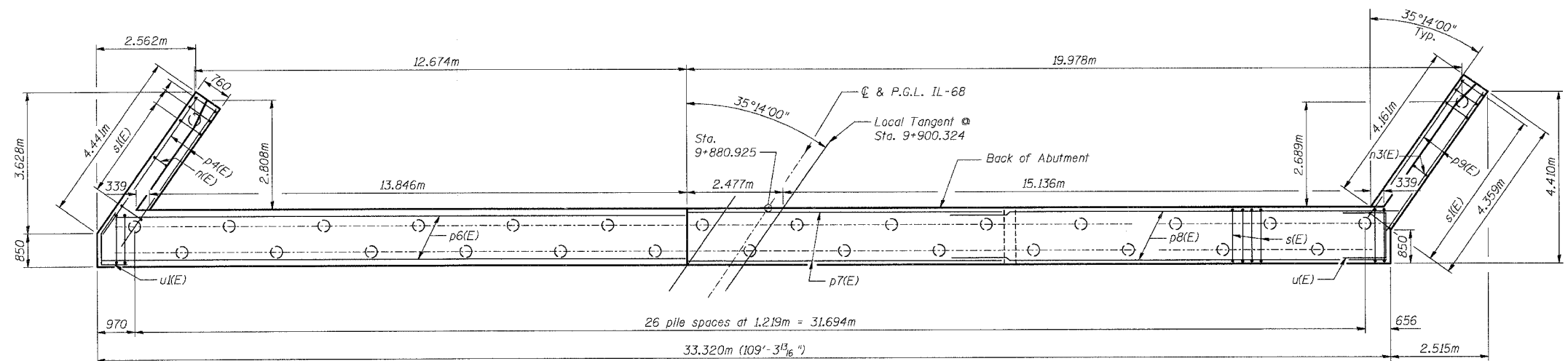
PILE DATA

Pile Type and Size: 305mm ϕ Metal Shell, w/6.3mm wall
 Nominal Required Bearing: 1500 KN
 Allowable Resistance Available: 500 KN
 Est. Pile Length: 24.4m
 No. of Production: 26
 Number of Test Piles: 1
 The Metal Shell Piles shall be according to ASTM A252, Grade 3.



BILL OF MATERIAL

Bar	No.	Size	Length (m)	Shape
h8(E)	12	15	1.900	└
h10(E)	3	15	4.020	—
h11(E)	9	15	4.360	—
h12(E)	6	15	4.020	—
h13(E)	3	15	5.660	—
h14(E)	3	15	5.270	—
h15(E)	3	15	3.040	—
h16(E)	16	15	7.580	—
h17(E)	8	20	7.660	—
h18(E)	16	15	9.250	—
h19(E)	8	20	9.320	—
h20(E)	12	15	1.900	└
h21(E)	9	15	4.280	—
h22(E)	6	15	4.600	—
h23(E)	3	15	4.620	—
n(E)	12	20	3.500	└
n1(E)	12	20	2.050	└
n3(E)	14	20	3.800	└
p4(E)	6	25	4.330	—
p5(E)	3	25	3.060	—
p6(E)	16	25	8.220	—
p7(E)	8	25	8.100	—
p8(E)	16	25	7.510	—
p9(E)	6	25	5.000	—
s(E)	108	15	4.980	└
s1(E)	31	15	2.920	└
s2(E)	57	15	2.630	└
u(E)	5	20	3.350	└
u1(E)	4	20	2.080	└
v(E)	216	15	1.700	—
v1(E)	108	15	0.940	—
v2(E)	108	15	0.940	—
v3(E)	32	20	2.220	—
v4(E)	26	20	2.240	—
v5(E)	6	20	2.100	—
Concrete Structures	Cu. M		93.0	
Reinforcement Bars, Epoxy Coated	Kg		5,420	
Test Pile Metal Shells	Each		1	
Furnishing Metal Shell Piles 305mm	m		634	
Driving Piles	m		634	



PLAN - PILE CAP

MIN. BAR LAP

#15 Bars = 640
 #20 Bars = 790
 #25 Bars = 1.320m

- NOTES:**
- Reinforcement bars designated (E) shall be epoxy coated.
 - For details of Bar Splicers, see sheet S-29 of S-34.
 - All dimensions are in millimeters (mm) except as noted.
 - The test pile shall be driven to 110 percent of the Nominal Required Bearing indicated in the pile data information.

REVISIONS	NAME	DATE

ILLINOIS DEPARTMENT OF TRANSPORTATION
 IL ROUTE 68 OVER UPRR
 F.A.P. ROUTE 343 SECTION 70D-Y-B-R
 COOK COUNTY STATION 9+900.324
 STRUCTURE NO. 016-2732

WEST ABUTMENT DETAILS & PILE DETAILS

DESIGNED: BTO DRAWN: BTO
 CHECKED: JAN CHECKED: JAN
 DATE: 10/06

SHT. S-26 OF S-34