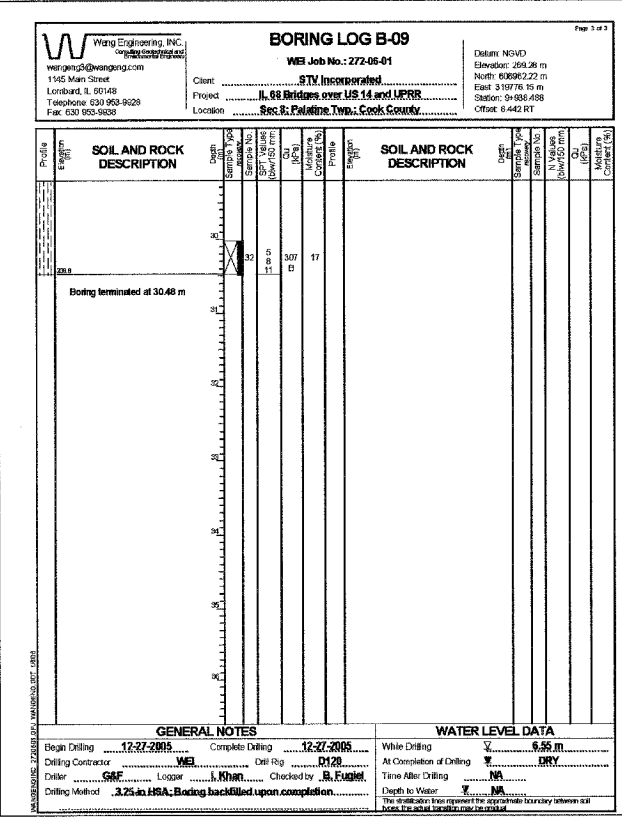
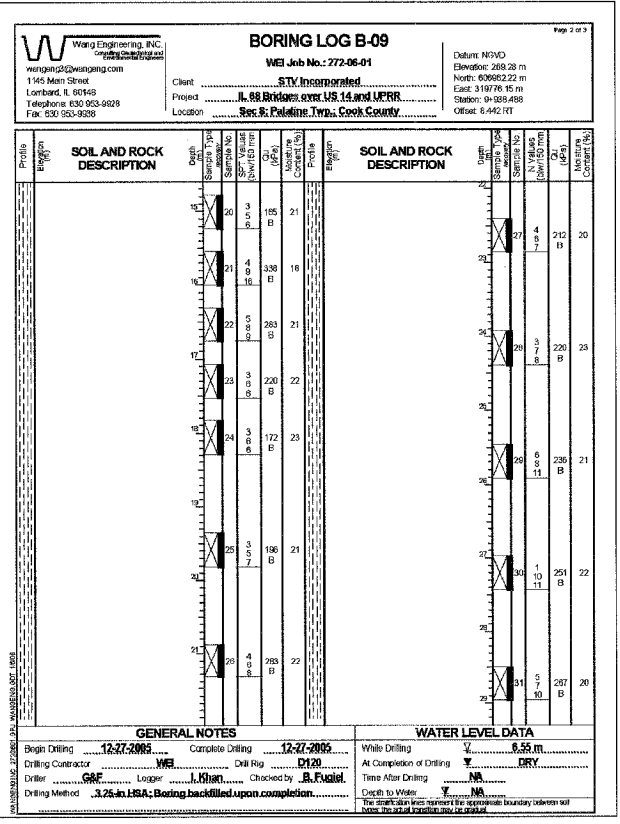
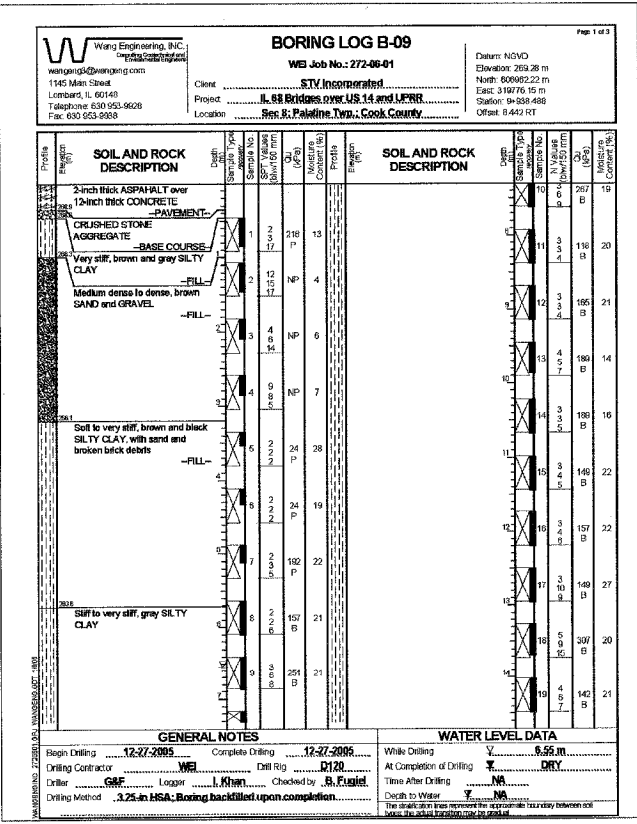
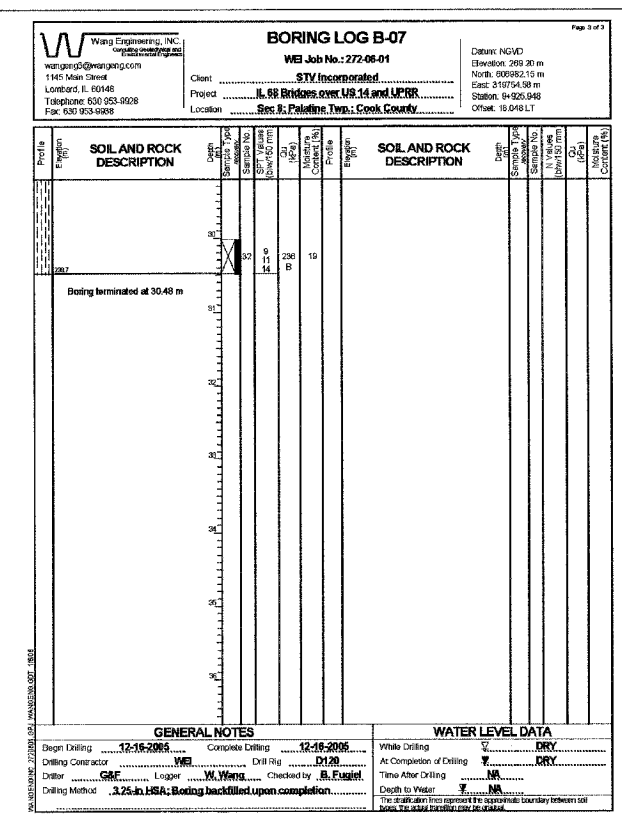
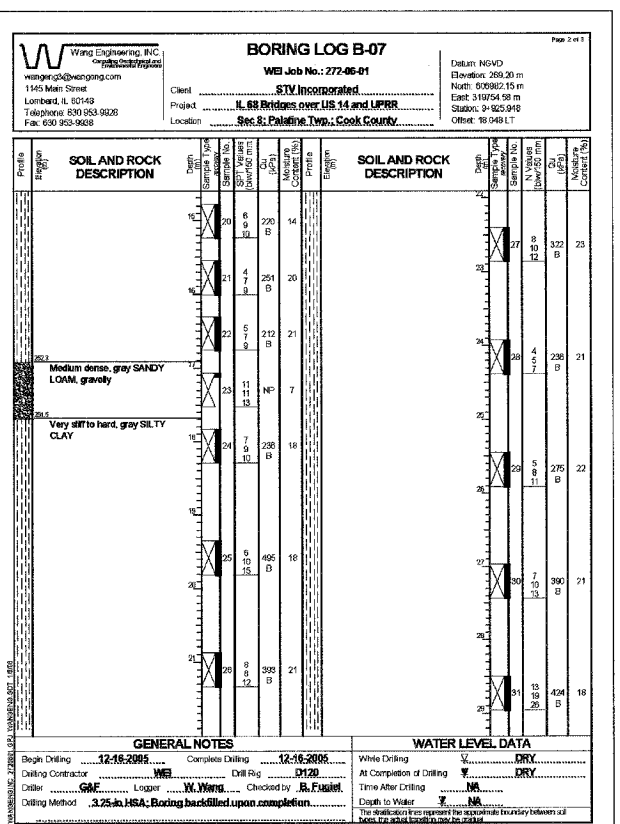
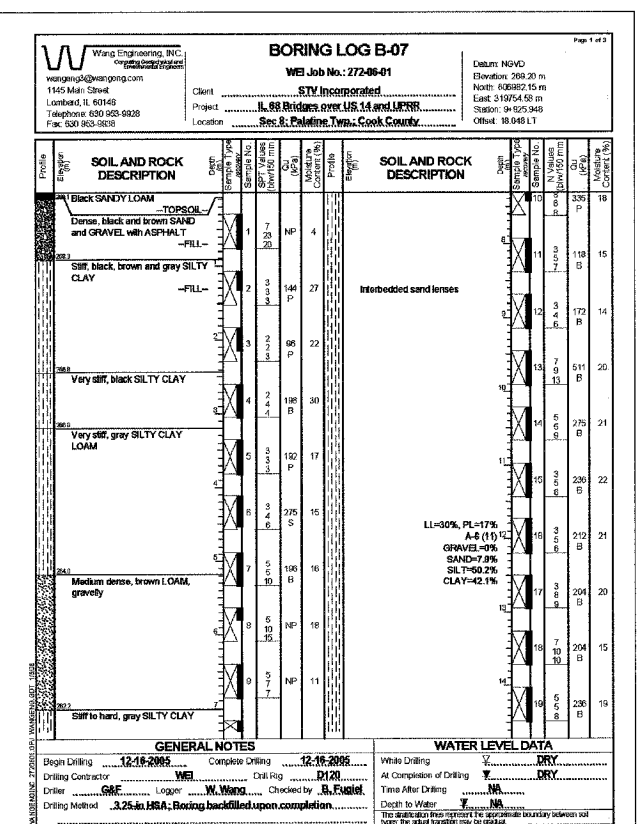


| | | | | |
|---------------------|-----------|---------------------------|--------------|-----------|
| F.A.P. RTE. | SECTION | COUNTY | TOTAL SHEETS | SHEET NO. |
| 343 | 70D-Y-B-R | COOK | 283 | 184 |
| STA. | | TO STA. | | |
| FED. ROAD DIST. NO. | | ILLINOIS FED. AID PROJECT | | |
| CONTRACT NO. 62897 | | | | |



NOTE:
 For 1967 Soil Borings, see existing bridge plans for SN 016-0523.

SHT. S-30 OF S-34

| REVISIONS | |
|-----------|------|
| NAME | DATE |
| | |
| | |
| | |
| | |

ILLINOIS DEPARTMENT OF TRANSPORTATION
 IL ROUTE 68 OVER UPRR
 F.A.P. ROUTE 343 SECTION 70D-Y-B-R
 COOK COUNTY STATION 9+900.324
 STRUCTURE NO. 016-2732

BORING LOGS

DESIGNED: BTO DRAWN: BTO
 DATE: 10/06 CHECKED: JAN CHECKED: JAN