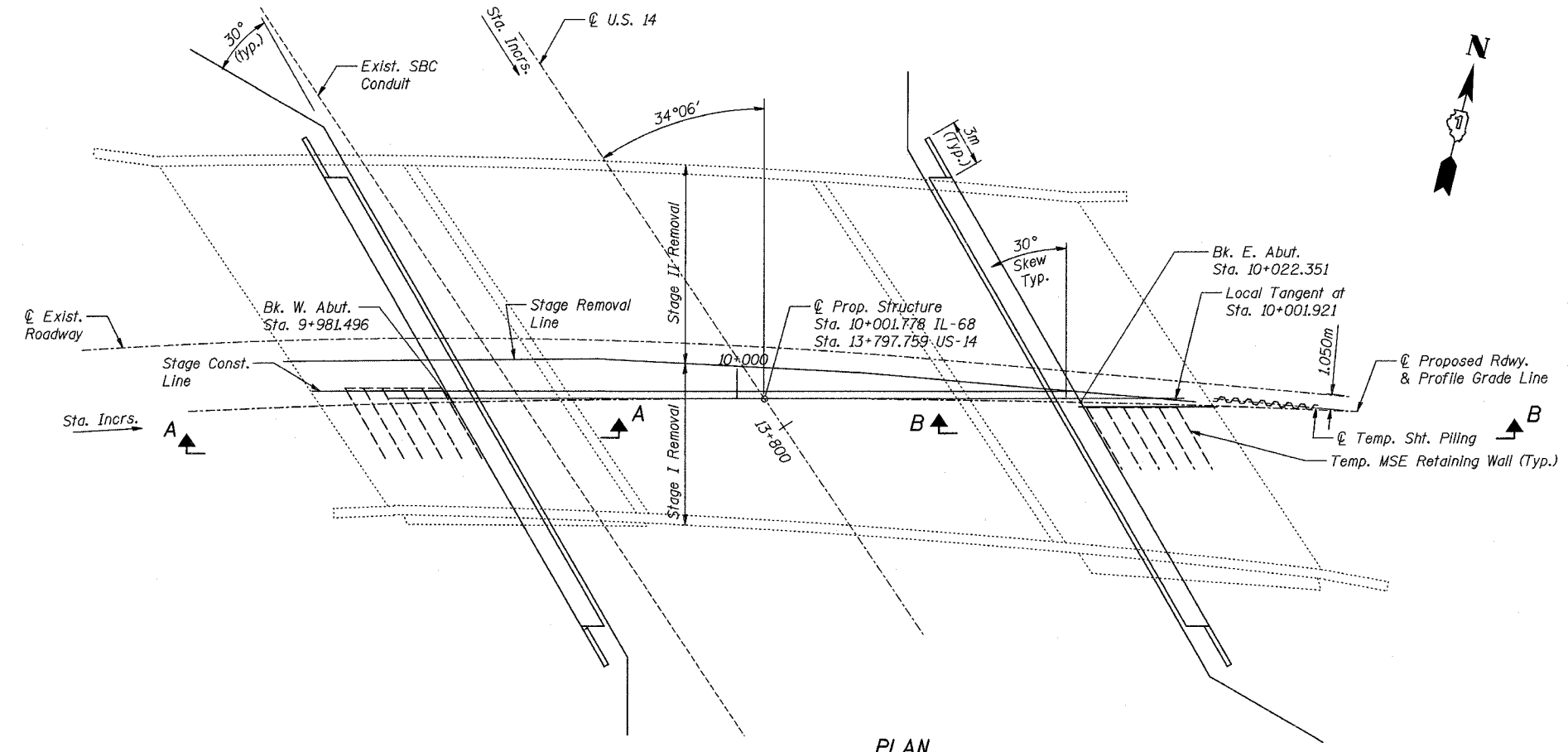


F.A.P. RTE.	SECTION	COUNTY	TOTAL SHEETS	SHEET NO.
343	TOHB-R-1	COOK	283	189
STA.		TO STA.		
FED. ROAD DIST. NO.	ILLINOIS	FED. AID PROJECT		
CONTRACT NO. 62897				

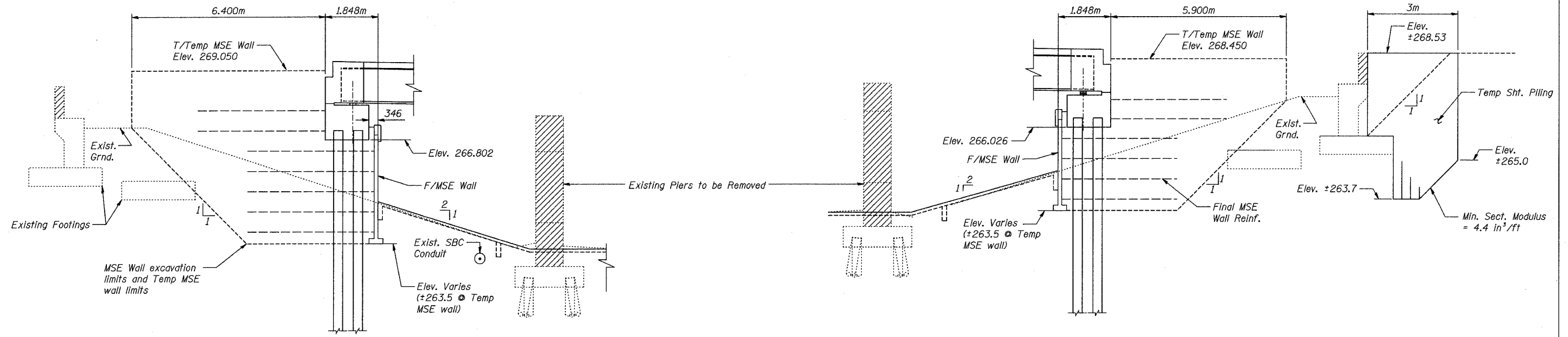


PLAN

BILL OF MATERIAL

Item	Unit	Total
Temporary Sheet Piling	SQ M	11.9
Temporary Mechanically Stabilized Earth Retaining Wall	SQ M	61.0

- NOTE:**
1. If the Contractor chooses to alter the temporary cantilevered sheet piling design requirements shown on the plans, a design submittal including plan details and calculations will be required for review and acceptance by the Engineer.
 2. See roadway drawings for roadway soil retainage requirements.



SECTION A-A
Distances shown along alignment of sheeting

SECTION B-B

Distances shown along alignment of sheeting

LEGEND
 Structure Removal

REVISIONS	
NAME	DATE

SHT. S-04 OF S-27

ILLINOIS DEPARTMENT OF TRANSPORTATION
 IL ROUTE 68 OVER US ROUTE 14
 F.A.P. ROUTE 343 SECTION TOHB-R-1
 COOK COUNTY STATION 10+001.778
 STRUCTURE NO. 016-2861
 TEMPORARY SHEET PILING
 AND MSE WALL

DESIGNED: BTO
 CHECKED: JAN
 DATE: 10/06

DRAWN: BTO
 CHECKED: JAN

STV Incorporated
 Engineers/Architects/Planners/Construction Managers
 200 W. Monroe Street, Suite 1650
 Chicago, IL 60606-5013
 312/553-0655, FAX 312/553-0661