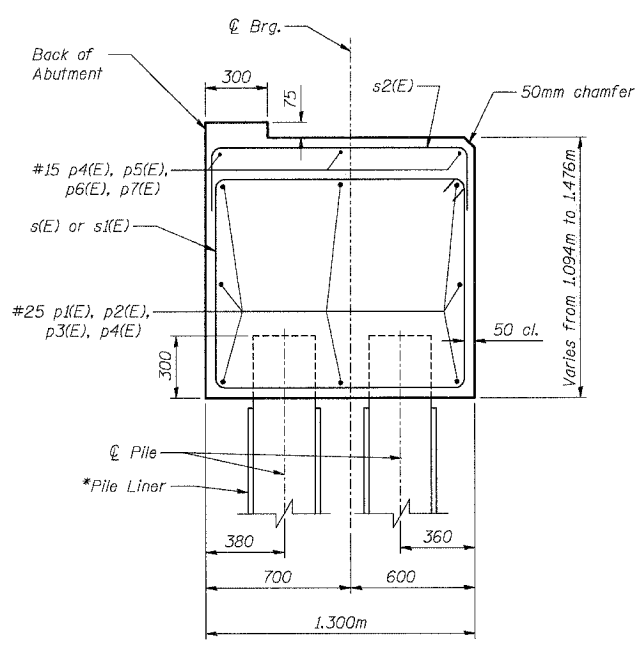
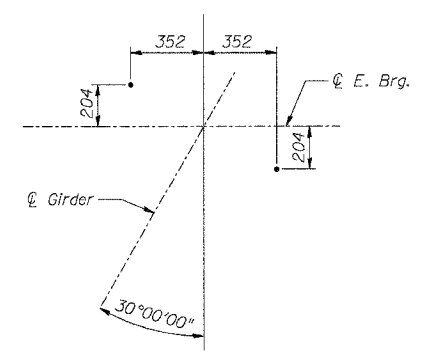


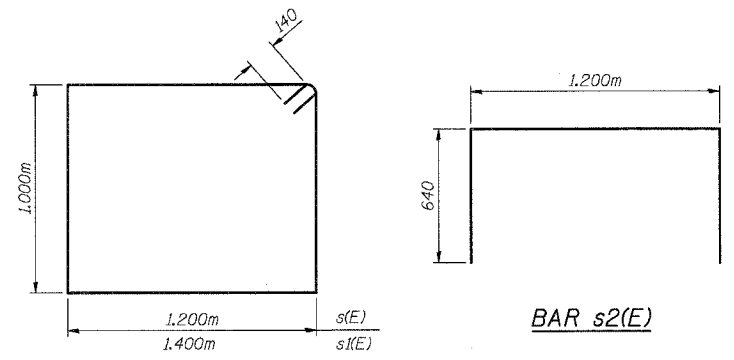
F.A.P. RTE.	SECTION	COUNTY	TOTAL SHEETS	SHEET NO.
343	70HB-R-1	COOK	283	206
STA.	TO STA.			
FED. ROAD DIST. NO.	ILLINOIS	FED. AID PROJECT		
CONTRACT NO. 62897				



SECTION THRU ABUTMENT

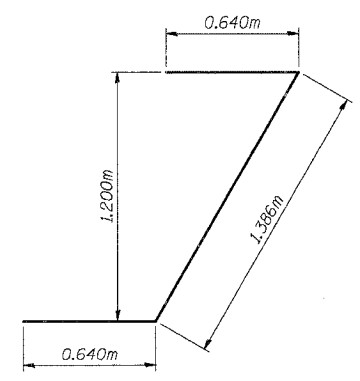


ANCHOR BOLT LAYOUT EAST ABUTMENT

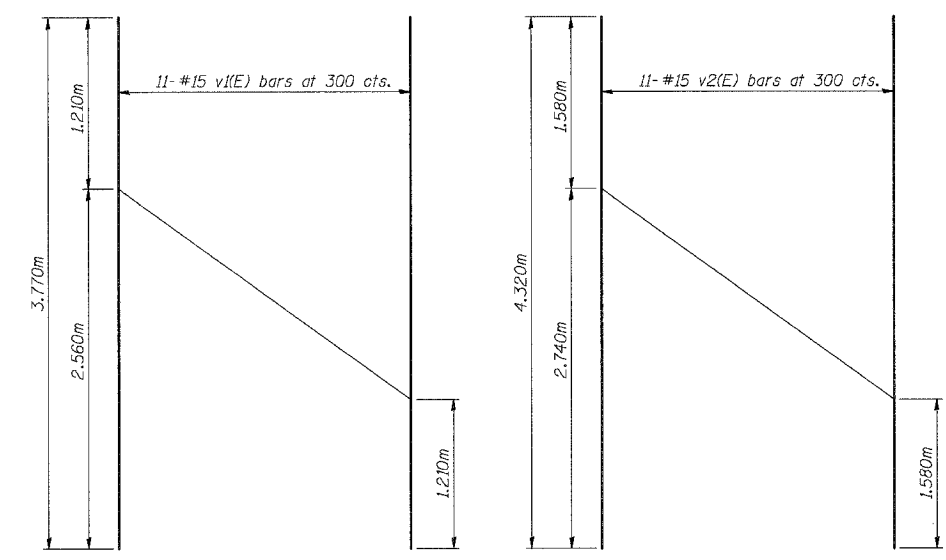


BARS s(E) and s1(E)

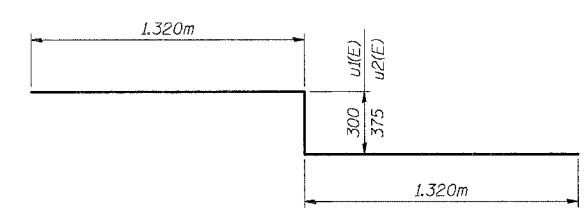
BAR s2(E)



BAR u(E)



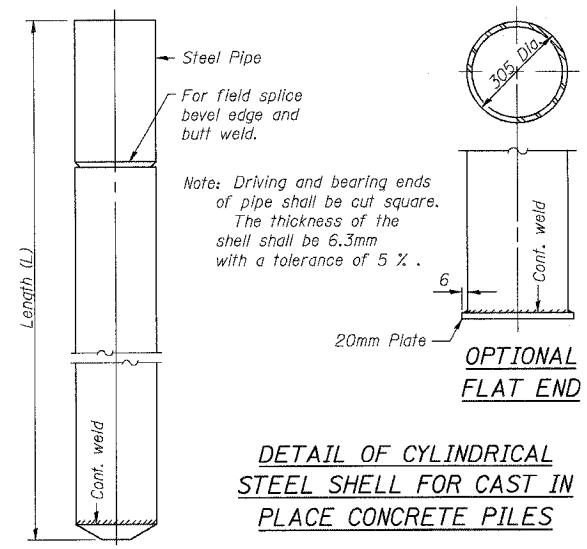
FIELD CUTTING DIAGRAM



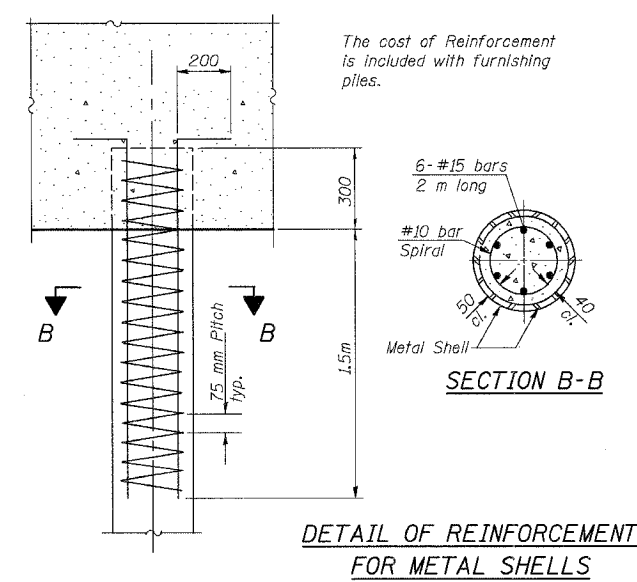
BAR u1(E) and u2(E)

BILL OF MATERIAL

Bar	No.	Size	Length (m)	Shape
n(E)	22	15	3.800	—
h1(E)	20	15	3.970	—
p(E)	16	25	5.950	—
p1(E)	8	25	8.380	—
p2(E)	8	25	5.530	—
p3(E)	16	25	6.730	—
p4(E)	6	15	6.880	—
p5(E)	3	15	2.090	—
p6(E)	3	15	4.690	—
p7(E)	6	15	3.320	—
s(E)	112	15	4.680	□
s1(E)	2	15	5.080	□
s2(E)	103	15	2.480	□
u(E)	8	20	2.660	J
u1(E)	3	25	2.940	J
u2(E)	3	25	3.015	J
v1(E)	11	15	3.770	—
v2(E)	11	15	4.320	—
Concrete Structures		Cu. M	57.5	
Reinforcement Bars, Epoxy Coated		Kg	3120	
Test Pile Metal Shells		Each	1	
Driving Piles		m	626	
Furnishing Metal Shell Piles 305mm		m	626	



DETAIL OF CYLINDRICAL STEEL SHELL FOR CAST IN PLACE CONCRETE PILES



DETAIL OF REINFORCEMENT FOR METAL SHELLS

- NOTES:**
- * - Pile Liner shall be included in the cost of "Furnishing Metal Pile Shells 305mm".
 - Reinforcement bars designated (E) shall be epoxy coated.
 - For details of Bar Splicers, see Sht. S-25 of S-27.
 - The test pile shall be driven to 110 percent of the Nominal Required Bearing indicated on the pile data information.

REVISIONS	NAME	DATE

STV Incorporated
 Engineer/Architect/Planner/Construction Manager
 200 W. Madison Street, Suite 1650
 Chicago, IL 60605-2015
 312.955-0655, FAX 312.553-0661

SHT. S-21 OF S-27

ILLINOIS DEPARTMENT OF TRANSPORTATION
 IL ROUTE 68 OVER US ROUTE 14
 F.A.P. ROUTE 343 SECTION 70HB-R-1
 COOK COUNTY STATION 10+001.778
 STRUCTURE NO. 016-2861

EAST ABUTMENT DETAILS & PILE DETAILS

DESIGNED: BTO DRAWN: BTO
 DATE: 10/06 CHECKED: JAN CHECKED: JAN

11/11/2006 2:37:43 PM