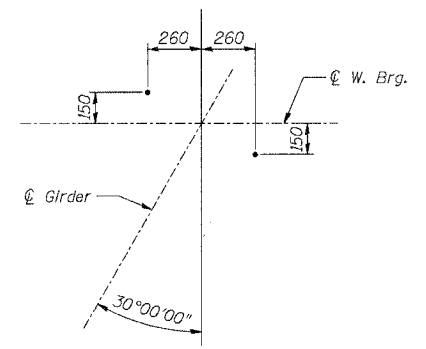
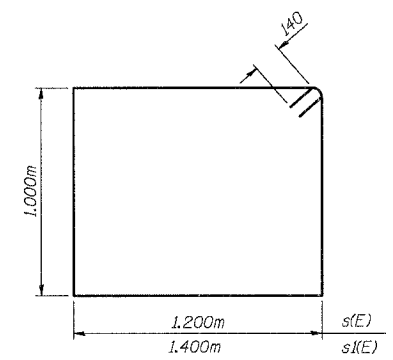


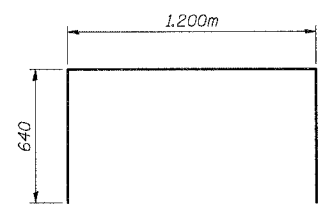
F.A.P. RTE.	SECTION	COUNTY	TOTAL SHEETS	SHEET NO.
343	70HB-R-1	COOK	283	208
STA.	TO STA.			
FED. ROAD DIST. NO.	ILLINOIS	FED. AID PROJECT		
CONTRACT NO. 62897				



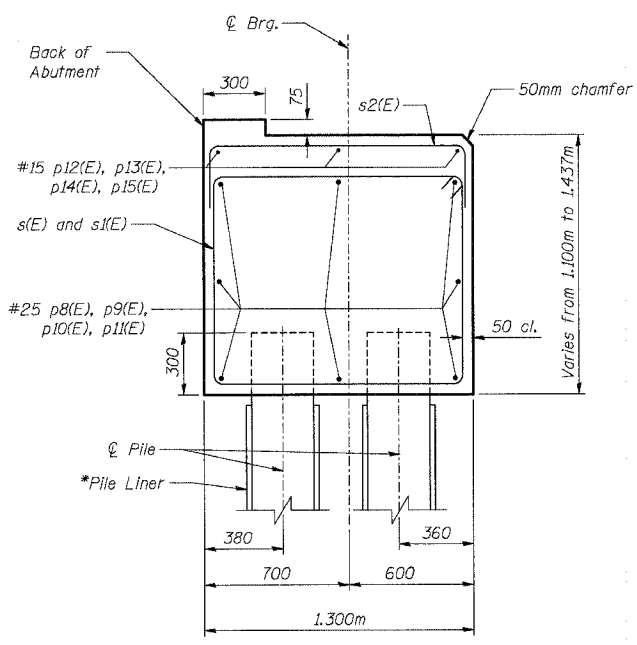
ANCHOR BOLT LAYOUT WEST ABUTMENT



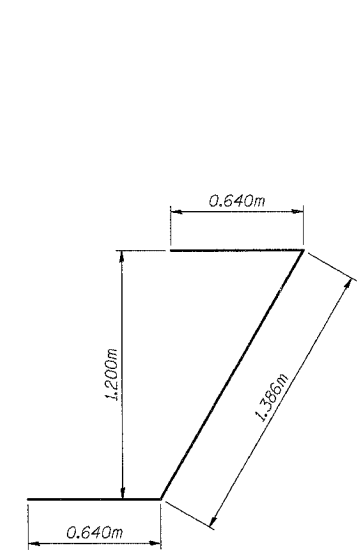
BARS s(E) and s1(E)



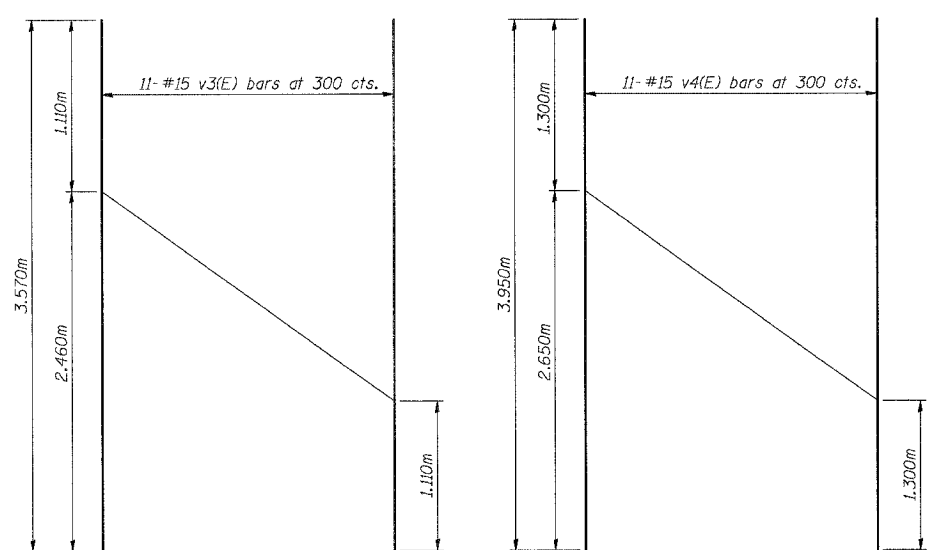
BAR s2(E)



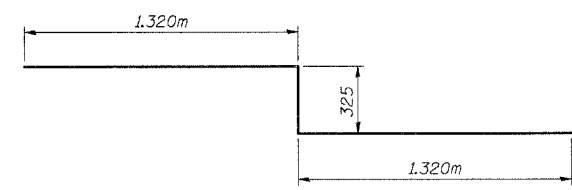
SECTION THRU ABUTMENT



BAR u(E)



FIELD CUTTING DIAGRAM



BAR u3(E)

BILL OF MATERIAL

Bar	No.	Size	Length (m)	Shape
h(E)	22	15	3.800	—
h1(E)	20	15	3.970	—
p8(E)	16	25	7.230	—
p9(E)	8	25	7.000	—
p10(E)	8	25	7.050	—
p11(E)	8	25	9.580	—
p12(E)	3	15	6.930	—
p13(E)	3	15	6.370	—
p14(E)	3	15	6.640	—
p15(E)	6	15	3.350	—
s(E)	112	15	4.680	□
s1(E)	2	15	5.080	□
s2(E)	82	15	2.480	□
u(E)	8	20	2.660	—
u3(E)	6	25	2.965	—
v3(E)	11	15	3.570	—
v4(E)	11	15	3.950	—
Concrete Structures			Cu. M	53.7
Reinforcement Bars, Epoxy Coated			Kg	2,990
Test Pile Metal Shells			Each	1
Driving Piles			m	650
Furnishing Metal Shell Piles 305mm			m	650

NOTES:

- * - Pile Liner shall be included in the cost of "Furnishing Metal Pile Shells 305mm".
- Reinforcement bars designated (E) shall be epoxy coated.
- For details of Bar Splicers, see Sht. S-25 of S-27.
- The test pile shall be driven to 110 percent of the Nominal Required Bearing indicated in the pile data information.

SHT. S-23 OF S-27

REVISIONS	
NAME	DATE

ILLINOIS DEPARTMENT OF TRANSPORTATION
 IL ROUTE 68 OVER US ROUTE 14
 F.A.P. ROUTE 343 SECTION 70HB-R-1
 COOK COUNTY STATION 10+001.778
 STRUCTURE NO. 016-2861
 WEST ABUTMENT DETAILS
 DESIGNED: BTO DRAWN: BTO
 DATE: 10/06 CHECKED: JAN CHECKED: JAN

STV Incorporated
 Systems Analysis/Programs/Construction Managers
 200 W. Madison Street, Suite 1650
 Chicago, IL 60606-5014
 312.553.6655, FAX 312.553.6661

10/13/2006 2:37:46 PM