

F.A.P. RTE.	SECTION	COUNTY	TOTAL SHEETS	SHEET NO.
567	34X-BR	DEKALB	90	19
STA. 132+00		TO STA. 138+00		
FED. ROAD DIST. NO.		ILLINOIS	FED. AID PROJECT	

LEGEND

TEMPORARY CONSTRUCTION EASEMENT

CLASS D PATCHING, TYPE 2, 13"

DESIGN	INT.	DATE	REASON

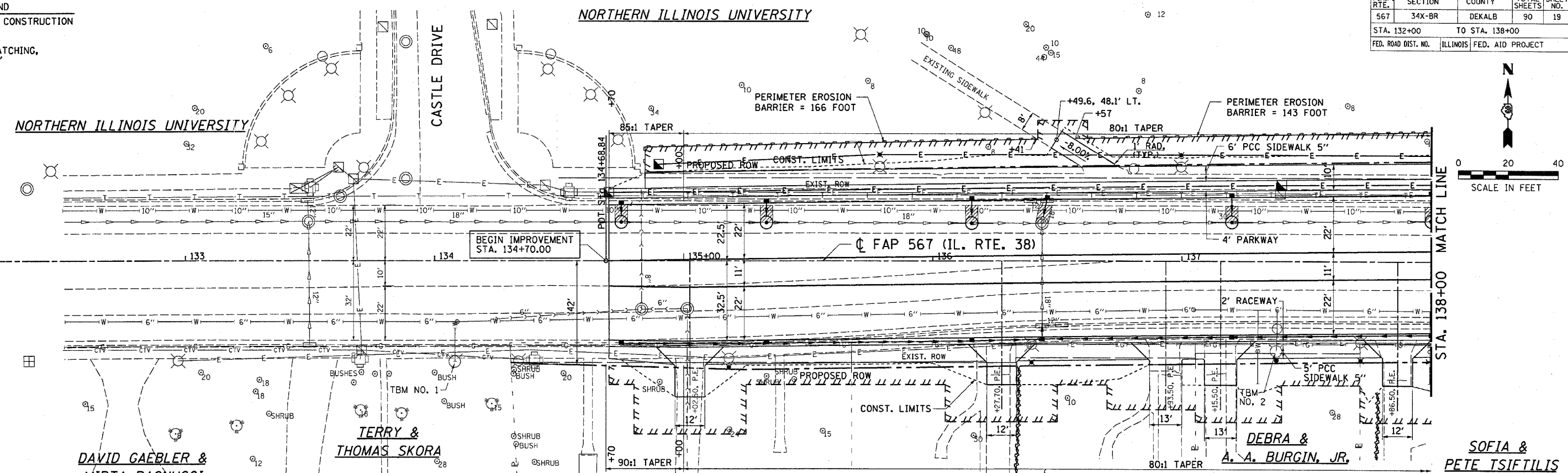
PLAN	DATE	BY

PLOTS & CHECKS	INT.	DATE	NO.	REASON

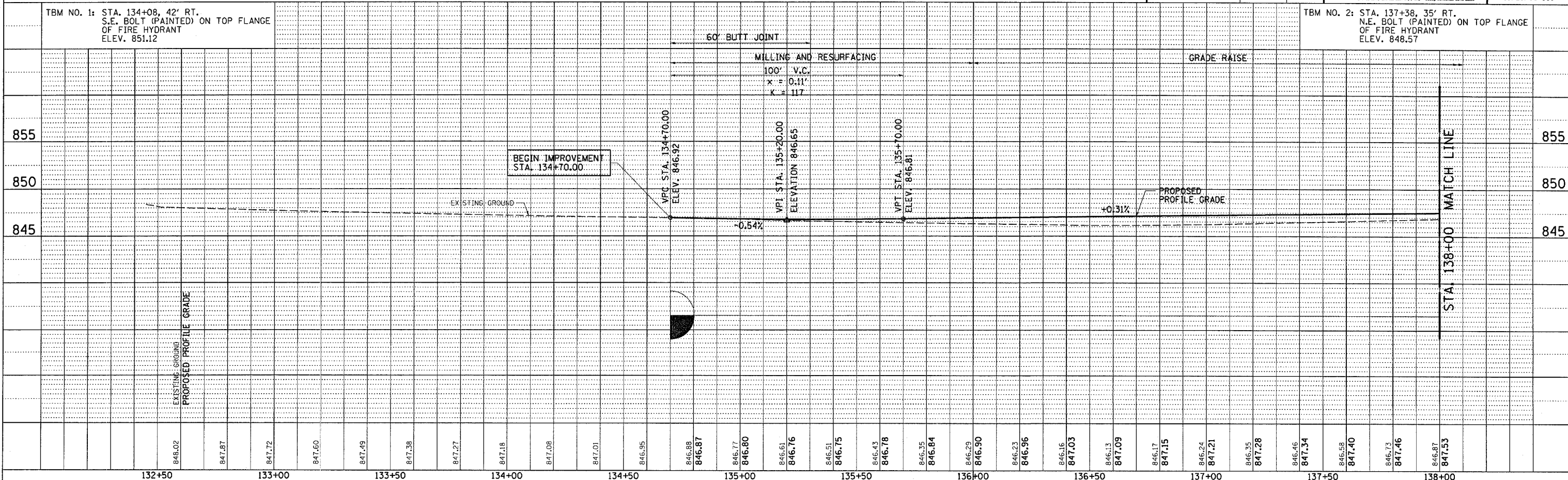
PROFILES	DATE	BY

CHECKS	INT.	DATE	REASON

IDOTPP-20 - 1/20 8/07/00



REVISION	DATE	BY	 GREENE & BRADFORD, INC. <small>CONSULTING ENGINEERS</small> <small>PROFESSIONAL ENGINEERS</small> <small>ILLINOIS LICENSE NO. 021-000000</small> <small>DEKALB COUNTY LICENSE NO. 021-000000</small> <small>DEKALB COUNTY LICENSE NO. 021-000000</small> <small>DEKALB COUNTY LICENSE NO. 021-000000</small>	COMPUTER FILE NO.
100T REVIEW	10/25/06	GSJ		D10800PLN1-01
100T REVISIONS	2/01/07			PROJECT: 05198 10/25/06-GSJ



ROADWAY PLAN AND PROFILE