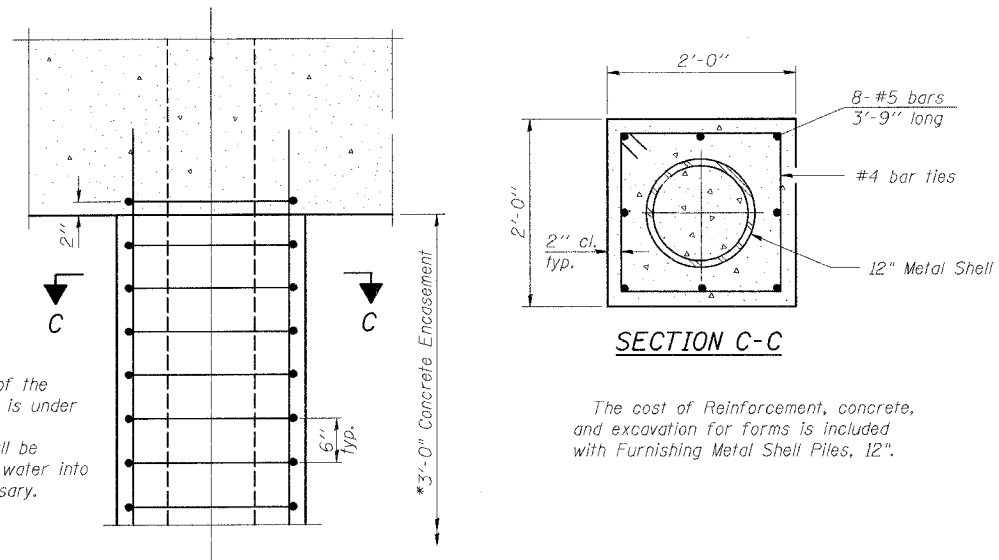


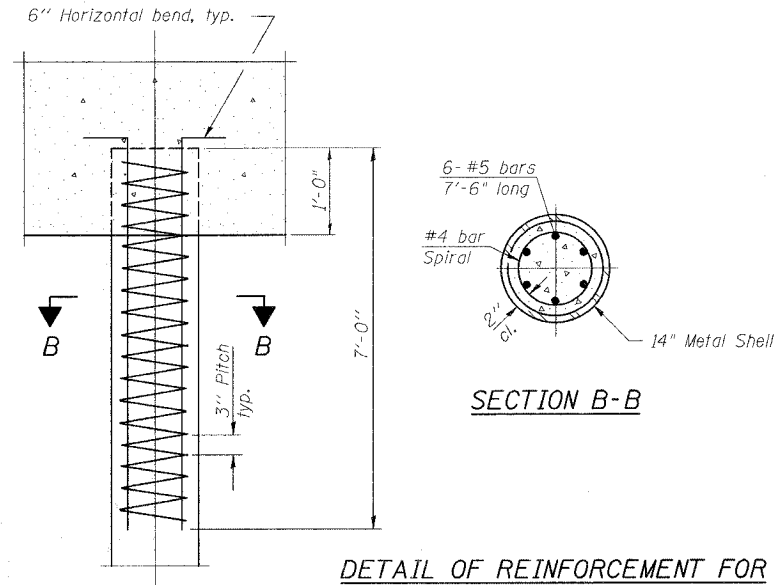
STATE OF ILLINOIS
DEPARTMENT OF TRANSPORTATION

ROUTE NO. FAU 567 (IL 38)	SECTION 34-XBR	COUNTY DEKALB	DATE 90	SHEET NO. 43	SHEET NO. 12 14 SHEETS
FED. ROAD DIST. NO.		ILLINOIS		FED. AID PROJECT	

Contract No. 64583



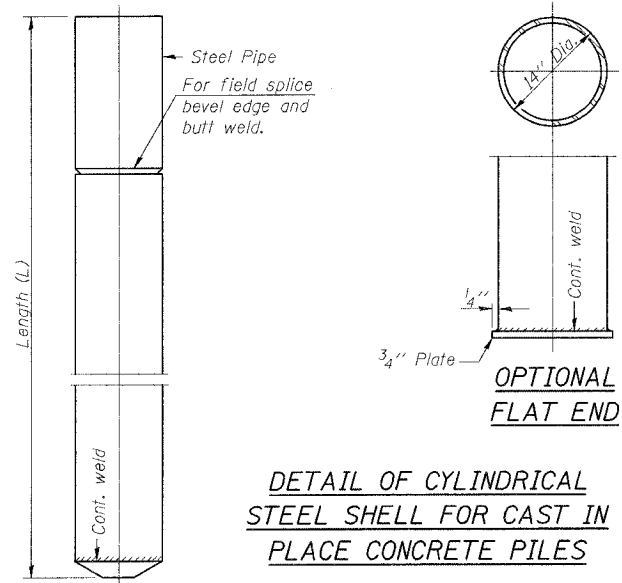
DETAIL OF PROTECTION
FOR METAL SHELLS AT PIERS



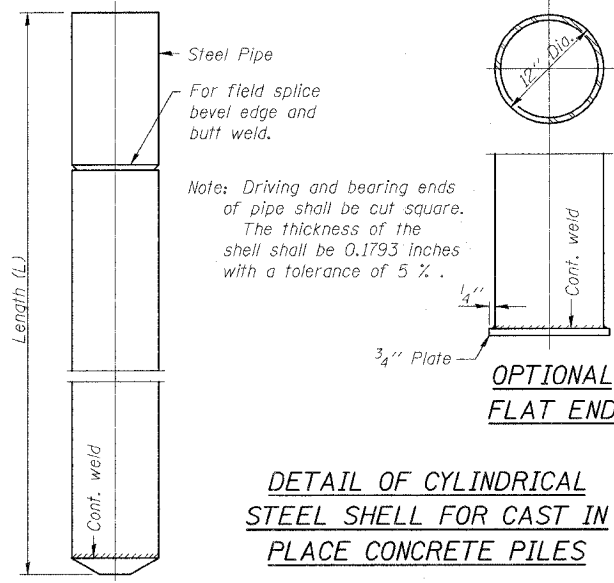
DETAIL OF REINFORCEMENT FOR
METAL SHELLS AT ABUTMENTS

* If a portion of the pile encasement is under water, Concrete Encasement shall be tremmed under water into forms as necessary.

Notes:
Driving and bearing ends of pipe shall be cut square.
The thickness of the shell shall be 0.250 inches with a tolerance of 5% .
The shell shall be according to Article 1006.05(a) of the Standard Specifications.



DETAIL OF CYLINDRICAL
STEEL SHELL FOR CAST IN
PLACE CONCRETE PILES



DETAIL OF CYLINDRICAL
STEEL SHELL FOR CAST IN
PLACE CONCRETE PILES

FILE NAME = I:\05689\DRAWINGS\SUBS\0044\SUBS\0044.dgn
PLOT SCALE = 1/8"=1'-0"
PLOT DATE = 12/14/2006
PLOT TIME = 15:06 PM
OPERATOR = michaell

REVISIONS	
NAME	DATE

ILLINOIS DEPARTMENT OF TRANSPORTATION
CONCRETE PILE DETAILS
F.A.U. ROUTE 567 (IL 38) OVER
SOUTH BRANCH OF THE KISHWAUKEE RIVER
DEKALB COUNTY - SEC. 34-XBR
STA. 140+96.71
S.N. 019-0044

SCALE: VERT.
HORIZ.
DATE: 7/6/05

DRAWN BY: LANDREY
DESIGNED BY: TRELLO
CHECKED BY: SANFORD

COMPUTER FILE NO.
SN019-0044:PILE
PROJECT 05198
12/4/06-MML

GREENE & BRADFORD, INC.
OF SPRINGFIELD
CONSULTING ENGINEERS
PROFESSIONAL ENGINEERS
1015 N. 4th St., Springfield, IL 62761-1015
TEL: 217-789-4444 FAX: 217-789-4427