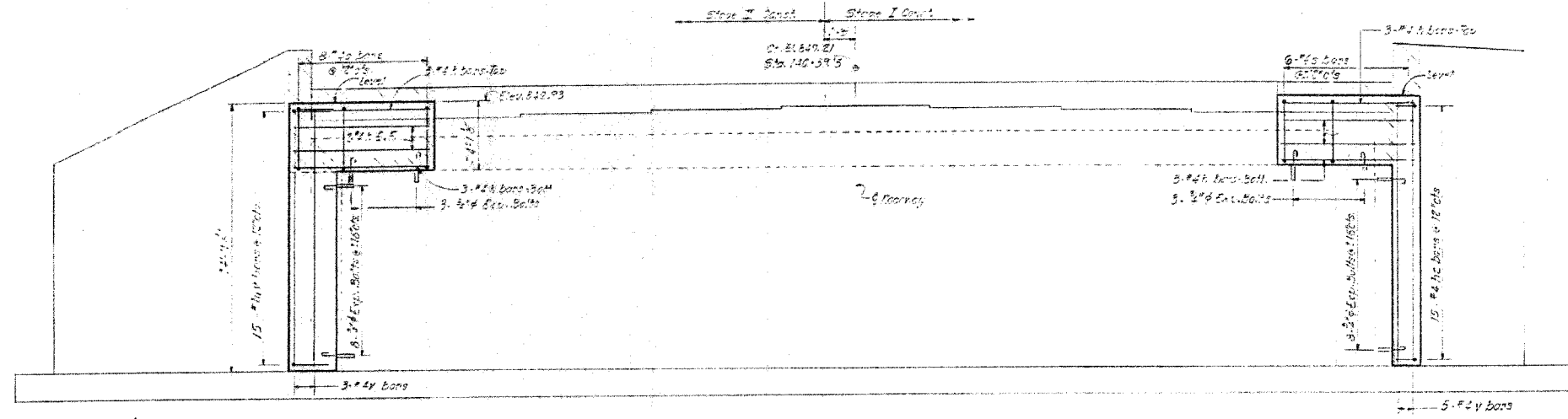


F.A.P. RTE.	SECTION	COUNTY	TOTAL SHEETS	SHEET NO.
567	34X-BR	DEKALB	90	53
STA.		TO STA.		
FED. ROAD DIST. NO.		ILLINOIS	FED. AID PROJECT	

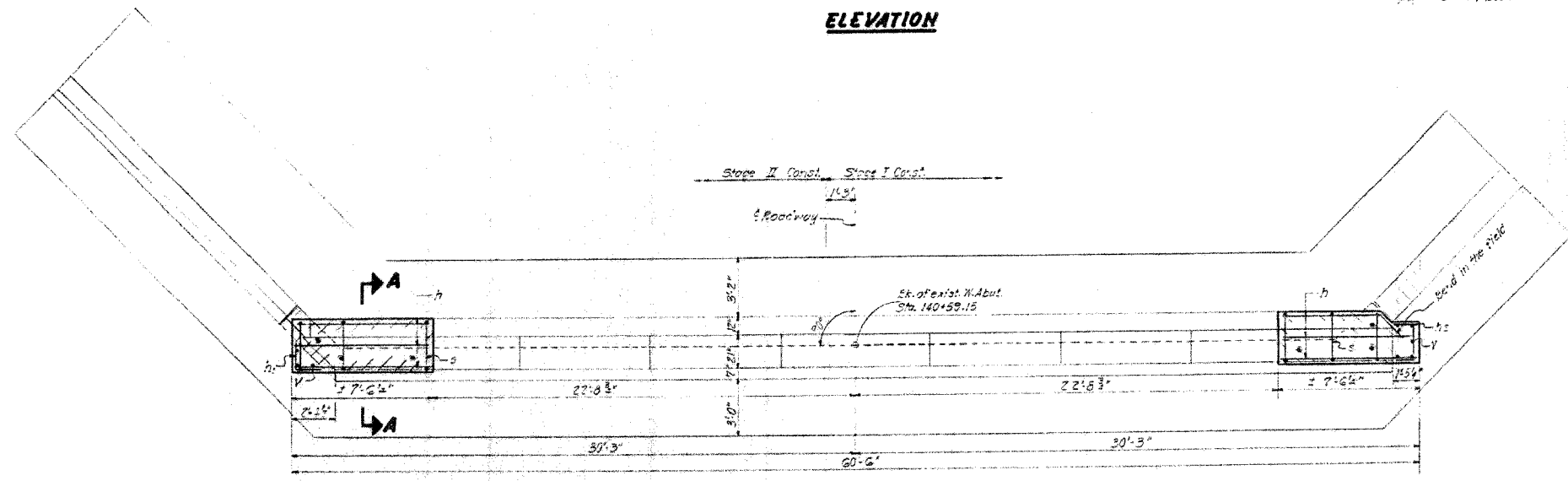
DIST. NO.	SECTION	COUNTY	TOTAL SHEETS	SHEET NO.
567	34X-BR	DEKALB	90	53

SHEET NO. 7
9 SHEETS

STATE OF ILLINOIS
DEPARTMENT OF TRANSPORTATION

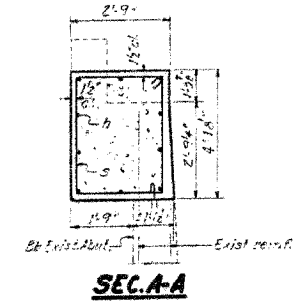
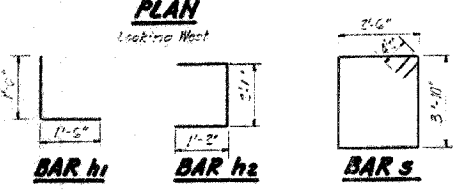


ELEVATION



PLAN
Looking West

Notes:
Hatched areas indicate Concrete Removal.
Reinforcement extending into removed area shall be cleaned and incorporated into the new concrete.
All angles shall have standard 45-degree unless otherwise noted.
Expansion bolts shall be anchored in sound concrete.



BILL OF MATERIAL

Item	No.	Size	Length	Shape
h	20	#4	7'-5"	—
h1	5	#4	3'-0"	L
h2	15	#4	4'-5"	L
s	10	#4	13'-0"	□
v	8	#4	14'-0"	□
Concrete Removal			Cu. Yd.	5
Class I Concrete			Cu. Yd.	6.2
Reinforcement Bars			Permt	380
Expansion Bolts (#4)			Each	22

WEST ABUTMENT
F.A. RT. 567 SEC. 34-X-BY
DEKALB COUNTY
STA. 141+02.40

DESIGNED	<i>[Signature]</i>	EXAMINED	<i>March 30 1977</i>
CHECKED	<i>[Signature]</i>	PASSED	<i>[Signature]</i>
DRAWN	S.U.	APPROVED	
CHECKED	<i>[Signature]</i>		

FOR INFORMATION ONLY

PLOT DATE = #DATE#
FILE NAME = #FILE#
PLOT SCALE = #SCALE#
REFERENCE = #REF#
OPERATION = #OPER#

REVISIONS	
NAME	DATE

ILLINOIS DEPARTMENT OF TRANSPORTATION
EXISTING BRIDGE PLANS

FAP RTE 567 (IL RTE 38)
SECTION 34X-BR
DEKALB COUNTY

SCALE: VERT. _____
HORIZ. _____
DATE 2/24/06

DRAWN BY SUTHEARD
CHECKED BY BOTT

GREENE & BRADFORD, INC.
OF SPRINGFIELD
CONSULTING ENGINEERS
300 WESTERN BLVD.
SPRINGFIELD, ILLINOIS 62767
PHONE: 217-244-2222 FAX: 217-244-2223
12170 BIRCH, EAST TAYLOR, ILL. MAIL: 62427

COMPUTER FILE NO.
D10800EPLN
PROJECT 05198
2/27/06-MDS

EXISTING BRIDGE PLANS