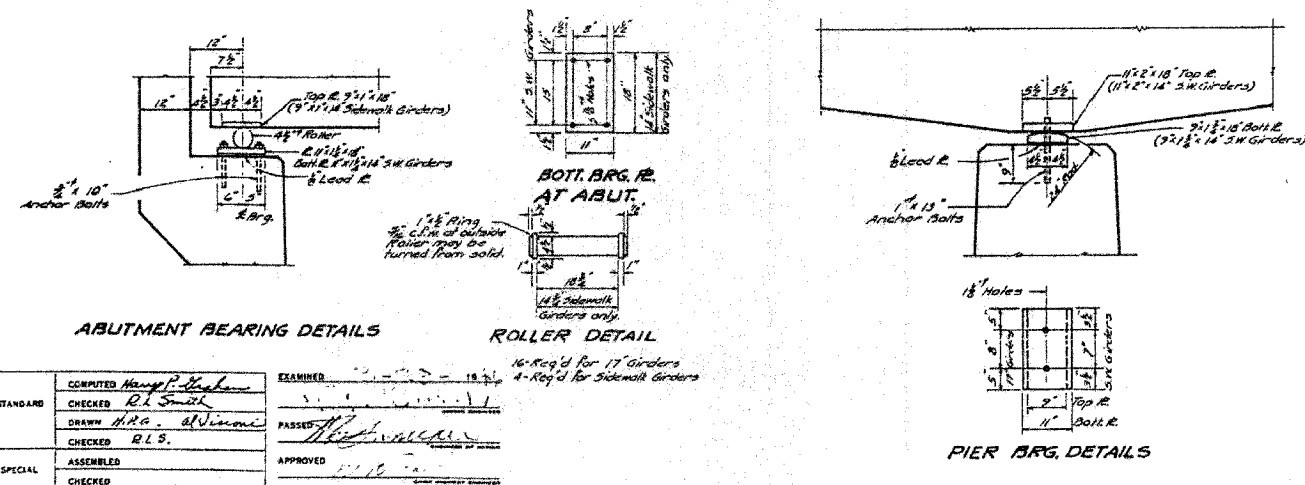
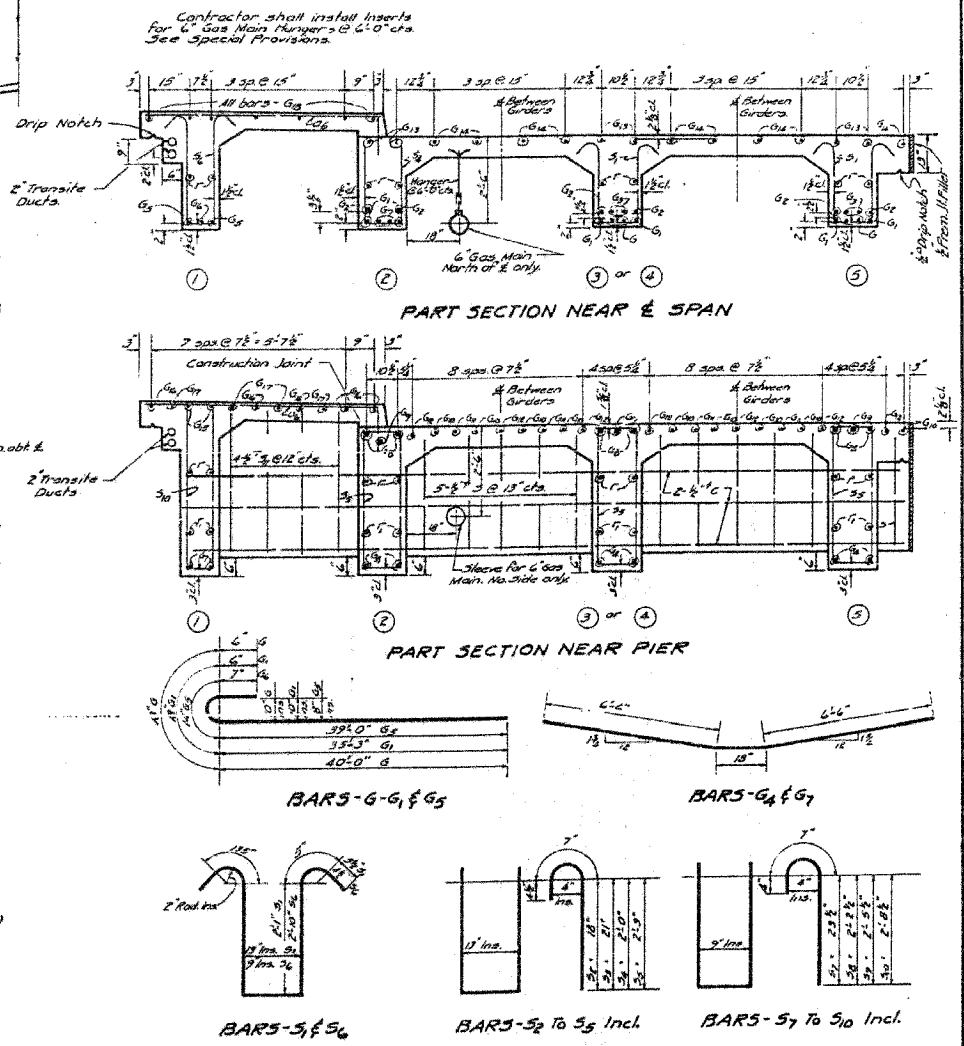
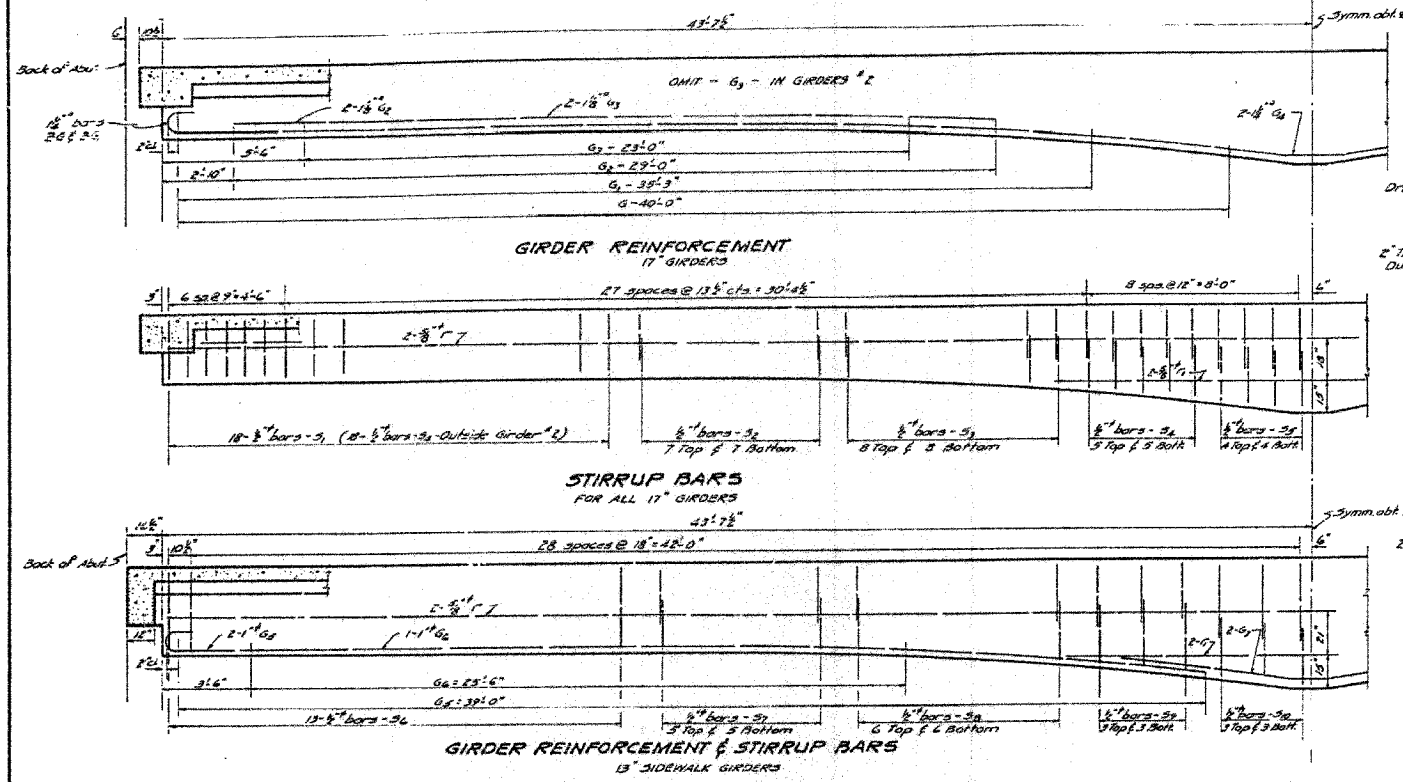


F.A.P. RTE.	SECTION	COUNTY	TOTAL SHEETS	SHEET NO.
567	34X-BR	DEKALB	90	59
STA.		TO STA.		
FED. ROAD DIST. NO.		ILLINOIS FED. AID PROJECT		

STATE OF ILLINOIS
DEPARTMENT OF PUBLIC WORKS & BUILDINGS
DIVISION OF HIGHWAYS

SECTION	COUNTY	TOTAL SHEETS	SHEET NO.
6	34X-B	DEKALB	13
STA.		TO STA.	
FED. ROAD DIST. NO.		ILLINOIS FED. AID PROJECT	



STANDARD	COMPUTED <i>Henry P. Heban</i>	EXAMINED	<i>[Signature]</i>
	CHECKED <i>R.L. Smith</i>		
	DRAWN <i>A.R.C. d'Vincenti</i>	PASSED	<i>[Signature]</i>
	CHECKED <i>R.L.S.</i>	APPROVED	<i>[Signature]</i>
SPECIAL	ASSEMBLED		
	CHECKED		

PROJECT - U-1(25)
SO. BRANCH KISHWAUKEE RIVER
F.A.R.T. 7(S.B.I.R.T. 6) SEC. 34X-B
DE KALB COUNTY
STA. 83+24.5

FOR INFORMATION ONLY

PLOT DATE = 8/24/06
FILE NAME = 815115
PLOT SCALE = 1/8" = 1'-0"
OPERATOR = MUSEKA

ILLINOIS DEPARTMENT OF TRANSPORTATION
EXISTING BRIDGE PLANS

FAP RTE 567 (IL RTE 38)
SECTION 34X-BR
DEKALB COUNTY

SCALE: VERT. _____
HORIZ. _____
DATE 2/24/06

DRAWN BY SUTHEARD
CHECKED BY BOTT

GREENE & BRADFORD, INC.
CONSULTING ENGINEERS
PROFESSIONAL ENGINEERS
ILLINOIS LICENSE NO. 021-1011
PROFESSIONAL ENGINEER, CIVIL
1015 N. WASHINGTON ST., DEKALB, ILL. 62521
TEL: 261-1111 FAX: 261-1112

COMPUTER FILE NO. D10800EPLN
PROJECT 05198
2/27/06-MDS

REVISIONS	
NAME	DATE

EXISTING BRIDGE PLANS