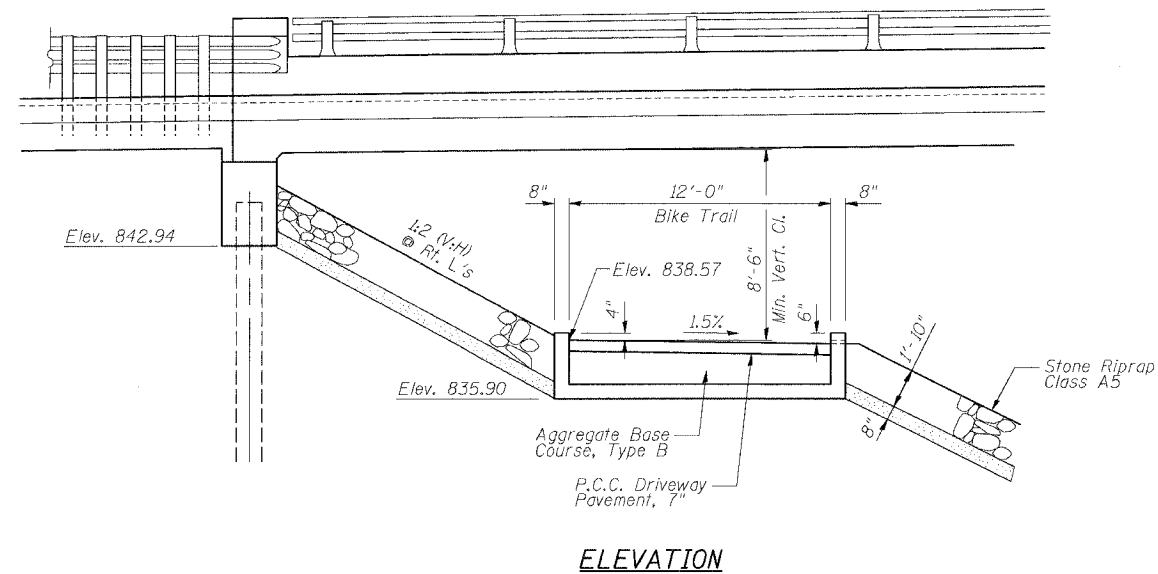


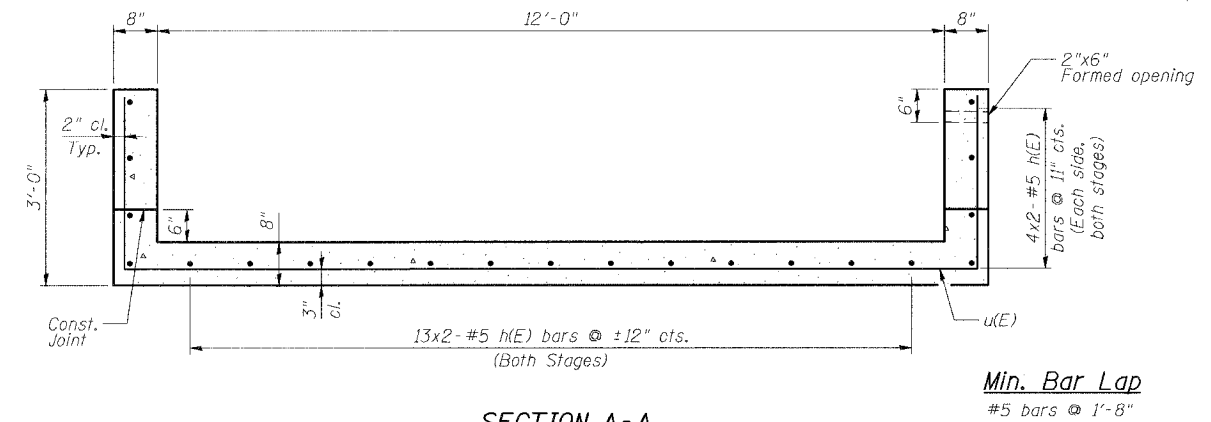
STATE OF ILLINOIS
DEPARTMENT OF TRANSPORTATION

ROUTE NO. FAU 567 (IL 38)	SECTION 34-XBR	COUNTY DEKALB	TOTAL SHEETS 90	SHEET NO. 65	SHEET NO. 1 1 SHEETS
FED. ROAD DIST. NO.		ILLINOIS	FED. AID PROJECT-		

Contract No. 64583

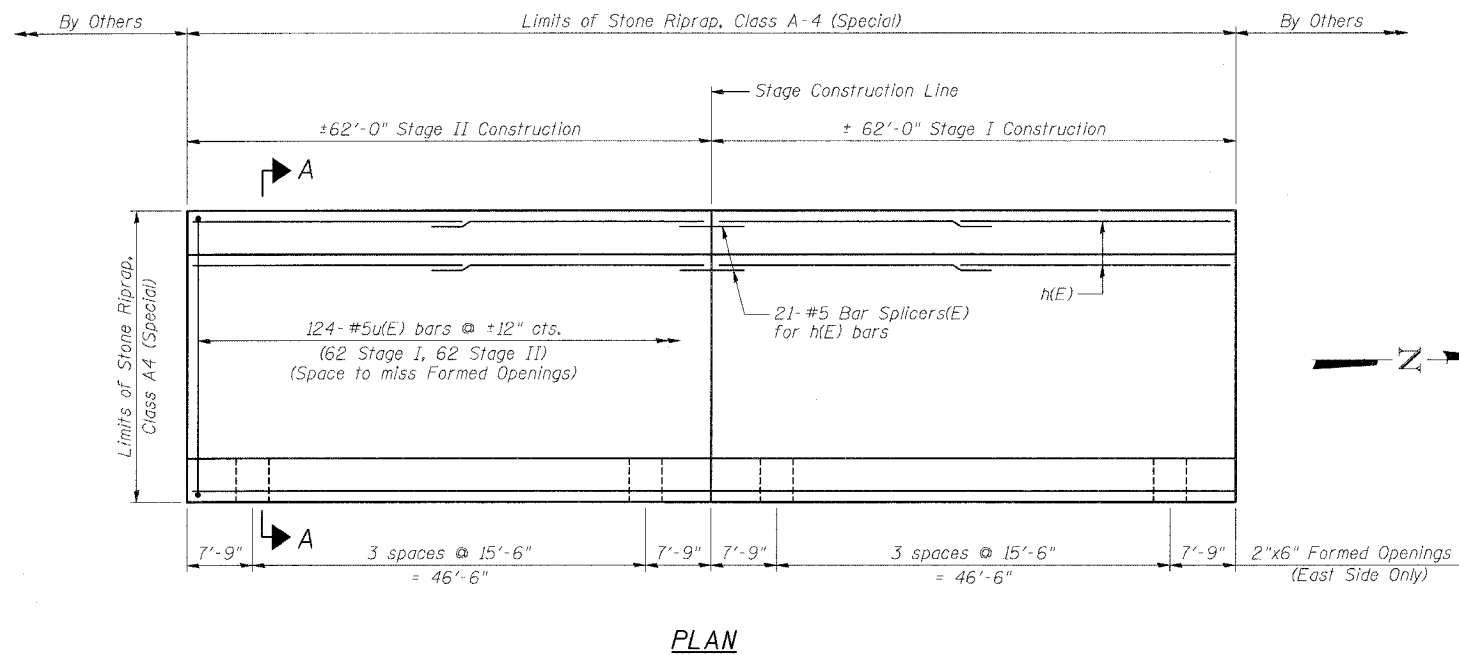


ELEVATION



SECTION A-A

Min. Bar Lap
#5 bars @ 1'-8"



PLAN

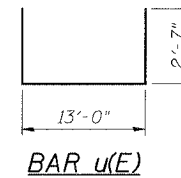
GENERAL NOTES

Reinforcement bars shall conform to the requirements of AASHTO M 31 or M 322 Grade 60.
All Construction joints shall be bonded.
For Riprap details, see Bridge plans.
For Bar Splicer Details, see Sheet 11 of 14 of Bridge Plans.

BILL OF MATERIAL

Bar	No.	Size	Length	Shape
h(E)	84	#5	32'-0"	—
u(E)	124	#5	18'-2"	└┘
Aggregate Base Course, Type B			Ton	126.8
P.C.C. Driveway Pavement, 7"			Sq. Yd.	165.3
Stone Riprap, Class A-4 (Special)			Sq. Yd.	184
Concrete Structures			Cu. Yd.	55.2
Reinforcement Bars, Epoxy Coated			Pound	5150
Bar Splicers			Each	21

Reinforcement bars designated (E) shall be epoxy coated.
Bars indicated thus 2x3-#5 etc. indicates 2 lines of bars with 3 lengths per line.



BAR u(E)

ILLINOIS DEPARTMENT OF TRANSPORTATION

BIKE TRAIL DETAILS

F.A.U. ROUTE 567 (IL 38) OVER
SOUTH BRANCH OF THE KISHWAUKEE RIVER
DEKALB COUNTY - SEC. 34-XBR
STA. 140+96.71
S.N. 019-0044

SCALE: VERT. / HORIZ. / DATE: 7/6/05
DRAWN BY: LANDREY / DESIGNED BY: TRELLO / CHECKED BY: SANFORD

GREENE & BRADFORD, INC. CONSULTING ENGINEERS 1111 S. WASHINGTON ST. SPRINGFIELD, ILL. 62761 TEL: 217-223-8227 FAX: 217-223-8228	COMPUTER FILE NO. SND19-0044BIKE PROJECT 05198 12/4/06-MML
---	---

REVISIONS	
NAME	DATE

FILE NAME = J:\05089\DRAWINGS\SN019-0044\SN019-0044.dgn
PLOT SCALE = 4.0000 /
PLOT DATE = 12/4/2006
PLOT TIME = 10:52:11 PM
OPERATOR = mchenel