

F.A.I. RTE.	SECTION	COUNTY	TOTAL SHEETS	SHEET NO.
80	181-1M-3	ROCK ISLAND	25	6
STA.		TO STA.		
FED. ROAD DIST. NO.		ILLINOIS FED. AID PROJECT		

HORIZONTAL & VERTICAL CONTROL

Chain I80 contains:
1 CUR 200 CUR 210 CUR 220 CUR 230 CUR 240 CUR 1250 31

Beginning chain I80 description
=====

Point 1 N 1,791,139.6465 E 2,241,631.9500 Sta 16+69.53

Course from 1 to PC 200 155° 22' 53.34" Dist 4,558.4706'

Curve Data

Curve 200
P.I. Station 80+65.81 N 1,785,324.7735 E 2,244,296.4801
Delta = 35° 33' 54.23" (LT)
Degree = 0° 59' 59.66"
Tangent = 1,837.8150'
Length = 3,556.8458'
Radius = 5,730.1246'
External = 287.5071'
Long Chord = 3,500.0177'
Mid. Ord. = 273.7708'
P.C. Station 62+28.00 N 1,786,995.5339 E 2,243,530.8931
P.T. Station 97+84.85 N 1,784,410.9704 E 2,245,891.0106
C.C. N 1,789,382.5583 E 2,248,740.1582

Course from PT 200 to PC 210 119° 48' 59.11" Dist 394.5479'

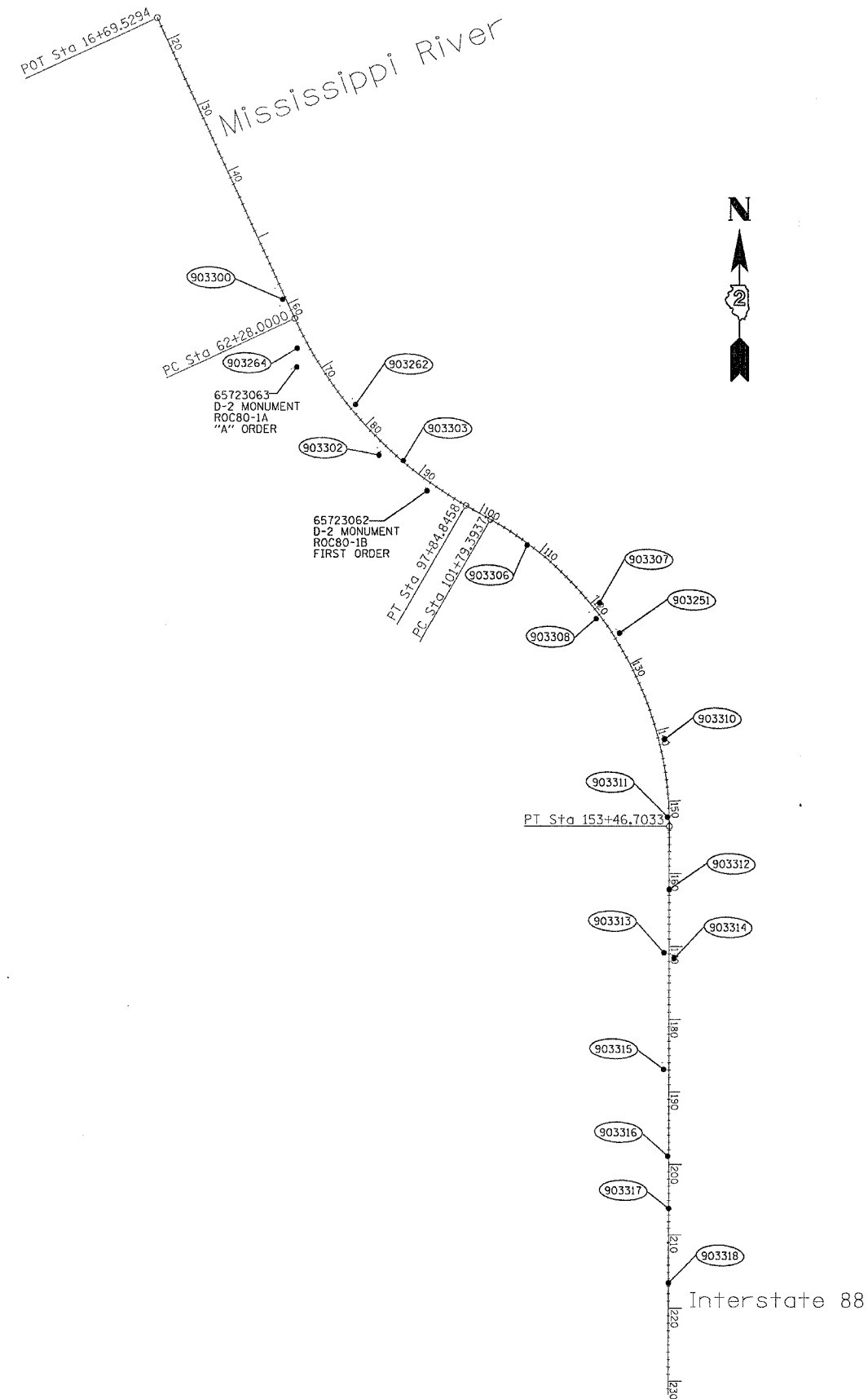
Curve Data

Curve 210
P.I. Station 130+30.99 N 1,782,796.9137 E 2,248,707.4407
Delta = 60° 16' 18.85" (RT)
Degree = 1° 09' 59.07"
Tangent = 2,851.5971'
Length = 5,167.3096'
Radius = 4,912.1568'
External = 767.7103'
Long Chord = 4,932.3309'
Mid. Ord. = 663.9439'
P.C. Station 101+79.39 N 1,784,214.7922 E 2,246,233.3295
P.T. Station 153+46.70 N 1,779,945.3200 E 2,248,703.0450
C.C. N 1,779,952.8920 E 2,243,790.8940

Course from PT 210 to PC 220 180° 05' 17.95" Dist 14,136.3378'

CURVE POINT NUMBERS

CHAIN	CURVE	PI	CC	PC	PT
I80	200	200	201	202	203
I80	210	210	211	212	213



PLT DATE = Thu Dec 14 07:42:11 2006
FILE NAME = c:\projects\64934\i80\hvc.dgn
APP NAME = hvc
USER NAME = gromph