

F.A.I. RTE.	SECTION	COUNTY	TOTAL SHEETS	SHEET NO.
39	141 / 201	*	46	10
STA. 1510+00		TO STA. 1523+00		
FED. ROAD DIST. NO.		ILLINOIS	FED. AID PROJECT	
*OGLE / WINNEBAGO				

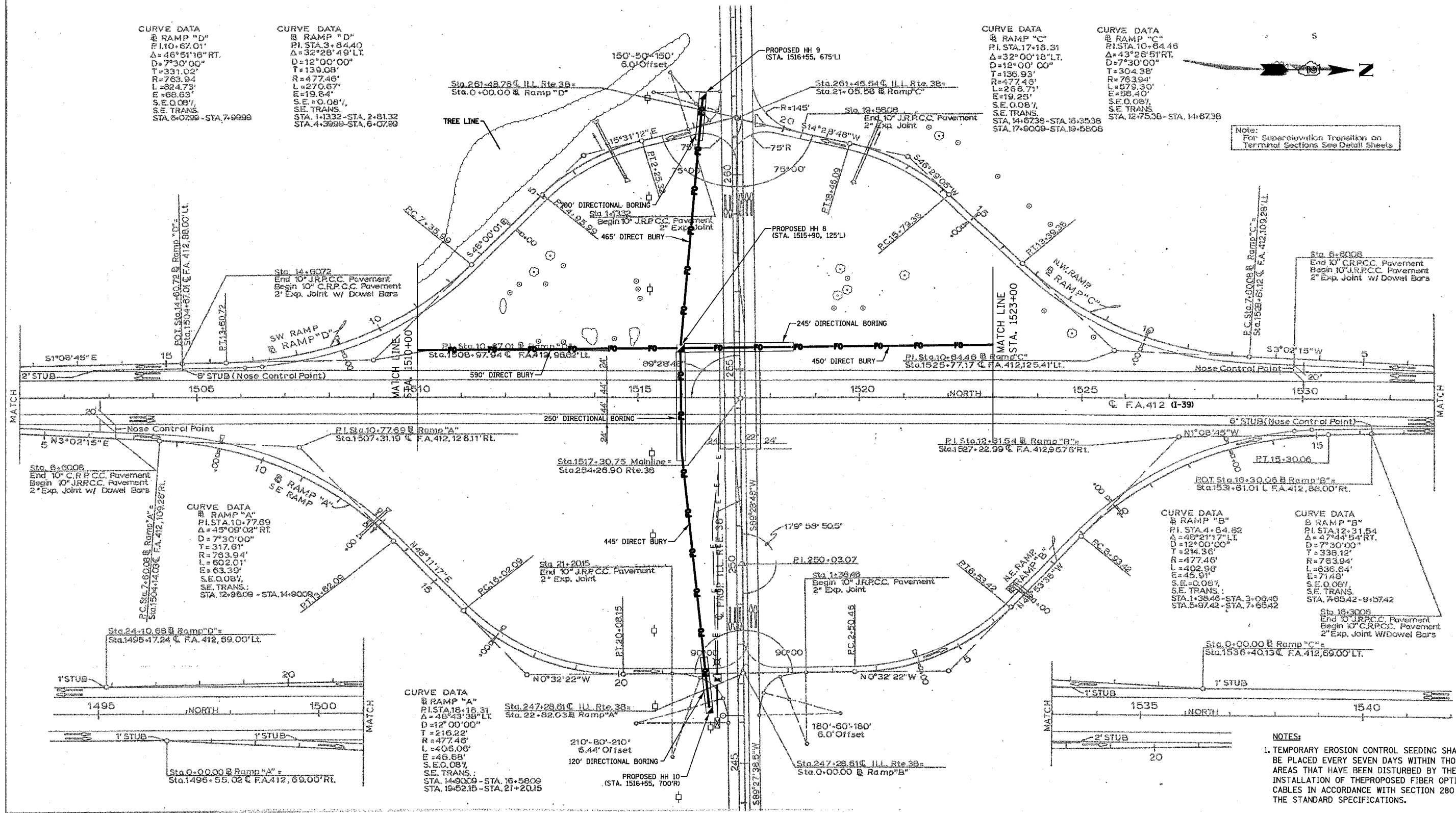
CURVE DATA
 @ RAMP "D"
 P.I. STA. 3+84.40
 Δ = 46°51'16" RT.
 D = 7°30'00"
 T = 331.02'
 R = 763.94'
 L = 824.73'
 E = 68.63'
 S.E. = 0.08%
 S.E. TRANS. STA. 5+0799 - STA. 7+9999

CURVE DATA
 @ RAMP "D"
 P.I. STA. 3+84.40
 Δ = 32°28'49" LT.
 D = 12°00'00"
 T = 139.08'
 R = 477.46'
 L = 270.67'
 E = 19.64'
 S.E. = 0.08%
 S.E. TRANS. STA. 1+1332 - STA. 2+8132
 STA. 4+3999 - STA. 6+0799

CURVE DATA
 @ RAMP "C"
 P.I. STA. 17+16.31
 Δ = 32°00'18" LT.
 D = 12°00'00"
 T = 136.93'
 R = 774.63'
 L = 265.73'
 E = 19.25'
 S.E. = 0.08%
 S.E. TRANS. STA. 14+6738 - STA. 16+3538
 STA. 17+6009 - STA. 19+5808

CURVE DATA
 @ RAMP "C"
 P.I. STA. 10+84.46
 Δ = 43°28'51" RT.
 D = 7°30'00"
 T = 304.38'
 R = 763.94'
 L = 579.30'
 E = 58.40'
 S.E. = 0.08%
 S.E. TRANS. STA. 12+7536 - STA. 14+6738

Note:
 For Superelevation Transition on Terminal Sections See Detail Sheets



CURVE DATA
 @ RAMP "A"
 P.I. STA. 10+77.69
 Δ = 45°09'02" RT.
 D = 7°30'00"
 T = 317.61'
 R = 763.94'
 L = 602.01'
 E = 63.39'
 S.E. = 0.08%
 S.E. TRANS. STA. 12+9809 - STA. 14+9009

CURVE DATA
 @ RAMP "B"
 P.I. STA. 4+64.82
 Δ = 48°21'17" LT.
 D = 12°00'00"
 T = 214.56'
 R = 477.46'
 L = 402.50'
 E = 45.91'
 S.E. = 0.08%
 S.E. TRANS. STA. 1+3846 - STA. 3+0046
 STA. 5+9742 - STA. 7+6542

CURVE DATA
 @ RAMP "B"
 P.I. STA. 12+31.54
 Δ = 47°44'54" RT.
 D = 7°30'00"
 T = 338.12'
 R = 763.94'
 L = 836.64'
 E = 71.48'
 S.E. = 0.08%
 S.E. TRANS. STA. 7+6542 - STA. 9+5742

CURVE DATA
 @ RAMP "A"
 P.I. STA. 18+15.31
 Δ = 46°43'38" LT.
 D = 12°00'00"
 T = 216.22'
 R = 477.46'
 L = 408.06'
 E = 46.68'
 S.E. = 0.08%
 S.E. TRANS. STA. 14+9009 - STA. 16+5809
 STA. 19+5215 - STA. 21+2015

NOTES:
 1. TEMPORARY EROSION CONTROL SEEDING SHALL BE PLACED EVERY SEVEN DAYS WITHIN THOSE AREAS THAT HAVE BEEN DISTURBED BY THE INSTALLATION OF THE PROPOSED FIBER OPTIC CABLES IN ACCORDANCE WITH SECTION 280 OF THE STANDARD SPECIFICATIONS.

12/14/2006
 G:\ENR\66-5799-13\DOT\Civil\SHR\1018.FD.Plt_04.dgn
 USER: JRS