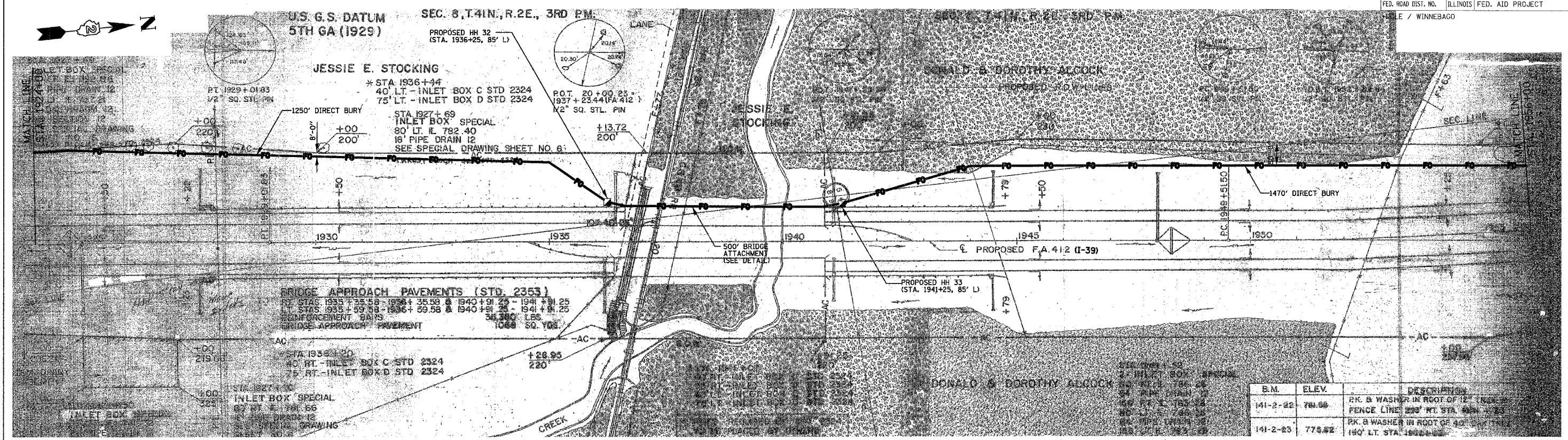


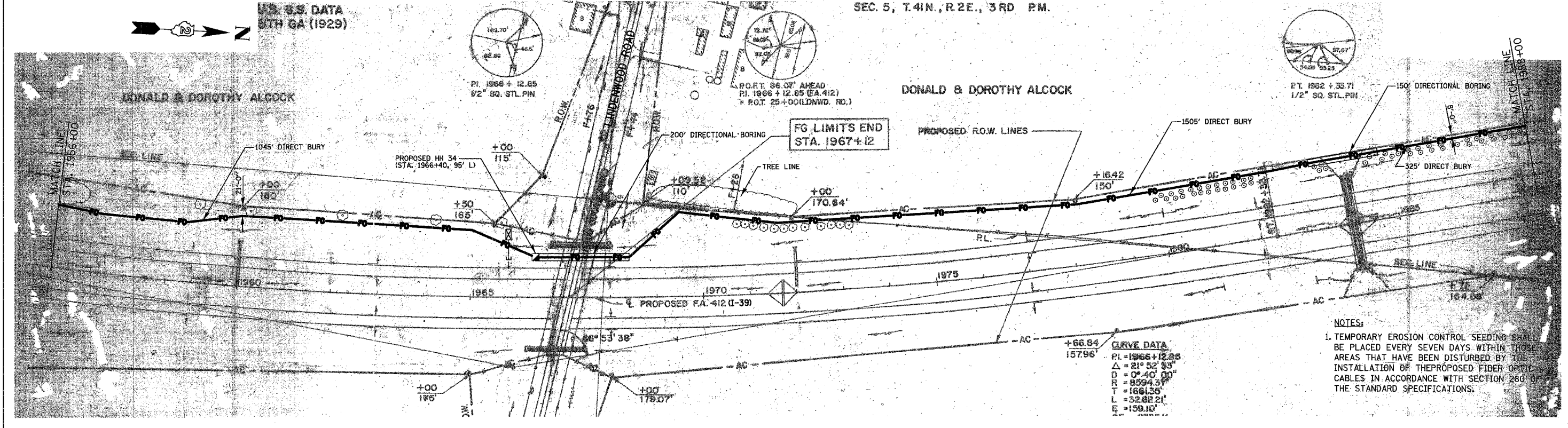
F.A.I. RTE.	SECTION	COUNTY	TOTAL SHEETS	SHEET NO.
39	141 / 201	•	46	19
STA. 1924+00		TO STA. 1988+00		
FED. ROAD DIST. NO.		ILLINOIS FED. AID PROJECT		
WILLIAMS / WINNEBAGO				



B.M.	ELEV.	DESCRIPTION
141-2-22	784.00	PK. & WASHER IN ROOT OF 12" TREE
141-2-23	775.62	PK. & WASHER IN ROOT OF 40' TREE

U.S. G.S. DATA
5TH GA (1929)

SEC. 5, T.41N., R.2E., 3RD PM.



CURVE DATA

PI = 1966+12.85
Δ = 21° 52' 53"
D = 0° 40' 00"
R = 8594.3'
T = 1661.35'
L = 32.8221'
E = 159.10'

NOTES:
1. TEMPORARY EROSION CONTROL SEEDING SHALL BE PLACED EVERY SEVEN DAYS WITHIN THOSE AREAS THAT HAVE BEEN DISTURBED BY THE INSTALLATION OF THE PROPOSED FIBER OPTIC CABLES IN ACCORDANCE WITH SECTION 280 OF THE STANDARD SPECIFICATIONS.

PLOT DATE = 12/11/2005
 PLOT SCALE = 1"=50'
 USER NAME = JUSER