

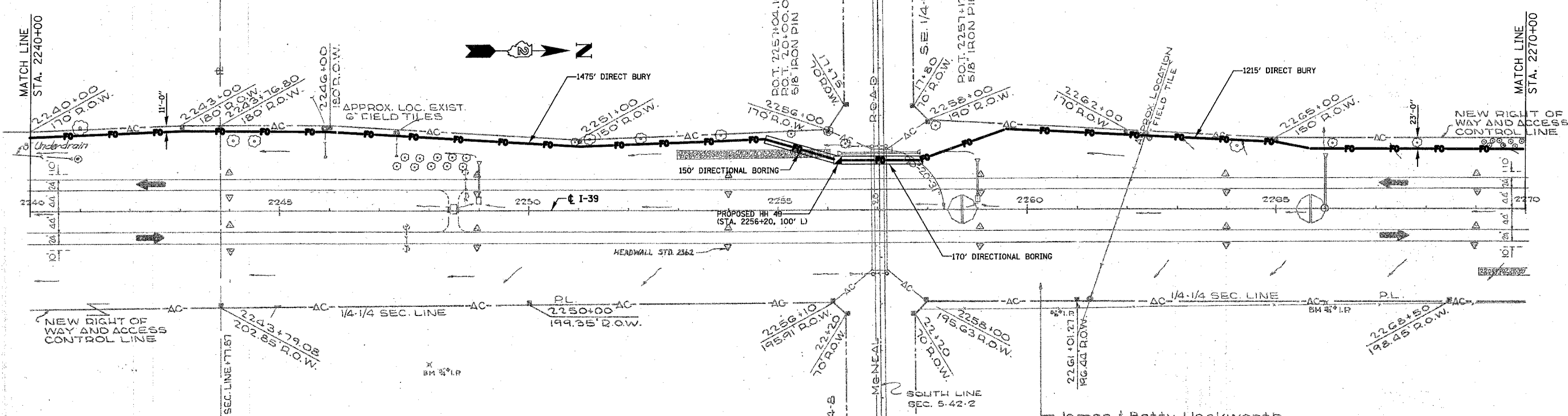
F.A.I. RTE.	SECTION	COUNTY	TOTAL SHEETS	SHEET NO.
39	141 / 201	*	46	25
STA. 2240+00		TO STA. 2300+00		
FED. ROAD DIST. NO.		ILLINOIS	FED. AID PROJECT	
*OGLE / WINNEBAGO				

Raymond & Mary N. Hall

B.M. MONUMENT 201' RT.
STA. 2243+79 ELEV. 807.11
Eddie Clankie

B.M. MONUMENT STA. 2255+00 @
EL. 811.41

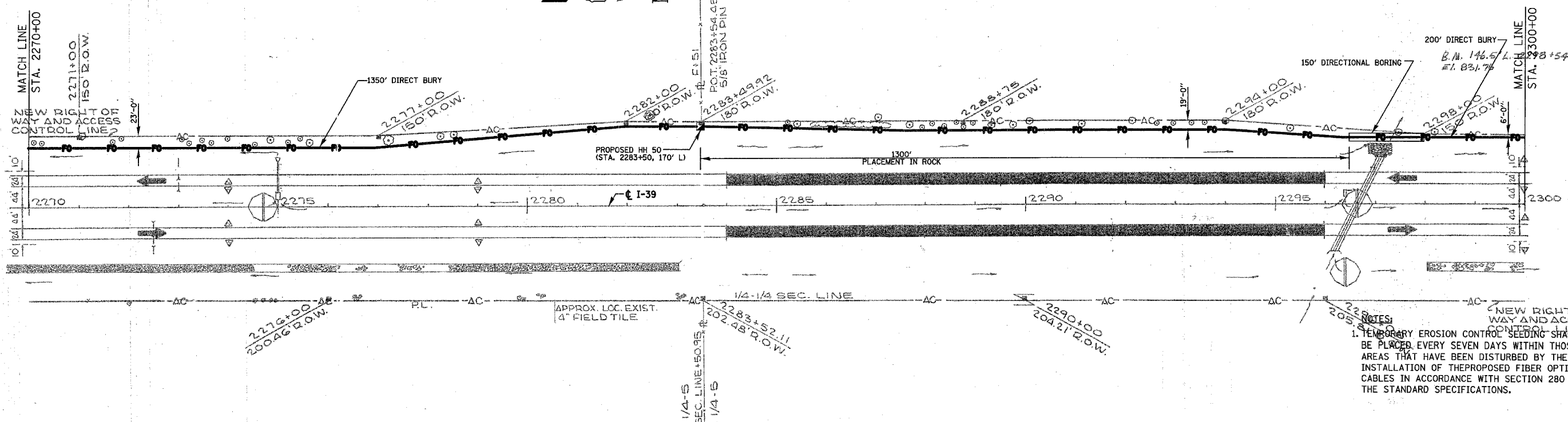
B.M. MONUMENT 2257+04 @
CENTER CRASHWALL EL. 816.36
Maynard W. Troxell



B.M. MONUMENT
147' LT. STA. 2275+00 ELEV. 843.83
Maynard W. Troxell

B.M. MONUMENT STA. 2283+54.45 @
ELEV. 846.35

John E. & Dorothy Carlson



NOTES:
1. TEMPORARY EROSION CONTROL SEEDING SHALL BE PLACED EVERY SEVEN DAYS WITHIN THOSE AREAS THAT HAVE BEEN DISTURBED BY THE INSTALLATION OF THE PROPOSED FIBER OPTIC CABLES IN ACCORDANCE WITH SECTION 280 OF THE STANDARD SPECIFICATIONS.

PLOT DATE = 12/14/2006
 FILE NAME = G:\ENGIN\66-6730-13 100T\CHASMA\SH1025.FD.P14.dgn
 USER NAME = JHEBER