

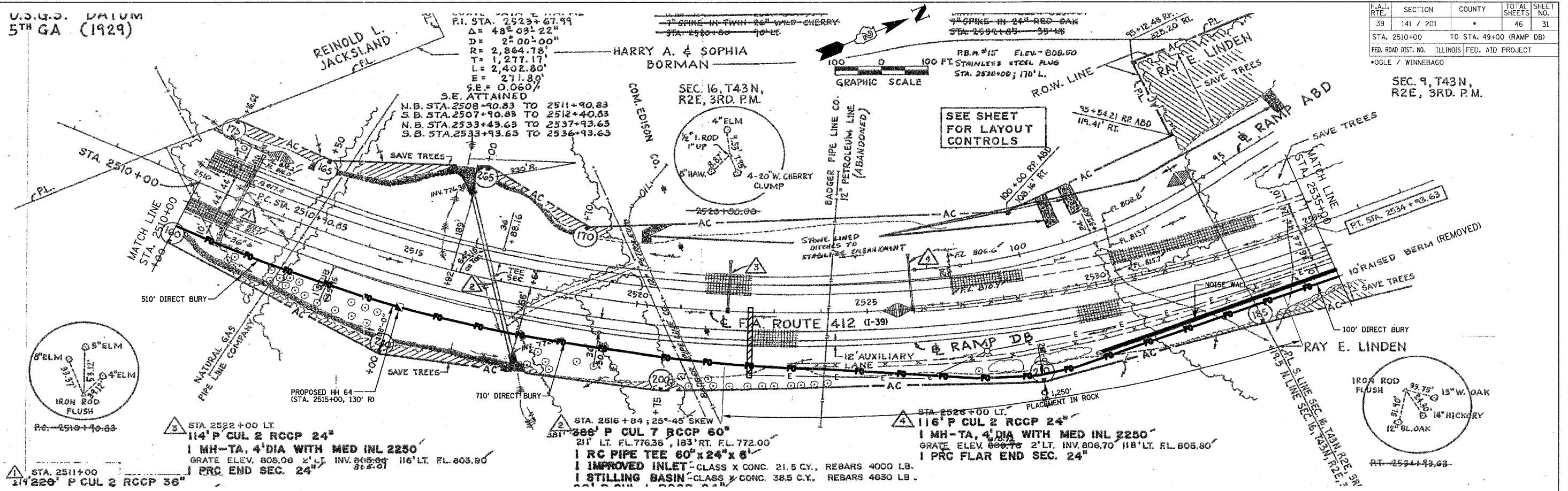
U.S.G.S. DATUM
5TH GA. (1929)

CONTRACT NO. 64C83

F.A.L. RTE.	SECTION	COUNTY	TOTAL SHEETS	SHEET NO.
39	141 / 201		46	31

STA. 2510+00 TO STA. 49+00 (RAMP DB)
FED. ROAD DIST. NO. ILLINOIS FED. AID PROJECT
*OGLE / WINNEBAGO

SEC. 9, T43N,
R2E, 3RD. P.M.



STA. 2511+00
21' 220' P CUL 2 RCCP 36"

STA. 2522+00 LT.
114' P CUL 2 RCCP 24"
1 MH-TA, 4' DIA WITH MED INL 2250
GRATE ELEV. 808.00 2' LT. INV. 805.00
PRC END SEC. 24"

STA. 2526+00 LT.
116' P CUL 2 RCCP 24"
1 MH-TA, 4' DIA WITH MED INL 2250
GRATE ELEV. 808.70 2' LT. INV. 805.80
PRC FLAR END SEC. 24"

STA. 2537+00
119' P CUL 2 RCCP 36"
1 MH-TA, 4' DIA WITH MED INL 2250
GRATE ELEV. 808.00 2' LT. INV. 805.00
PRC END SEC. 24"

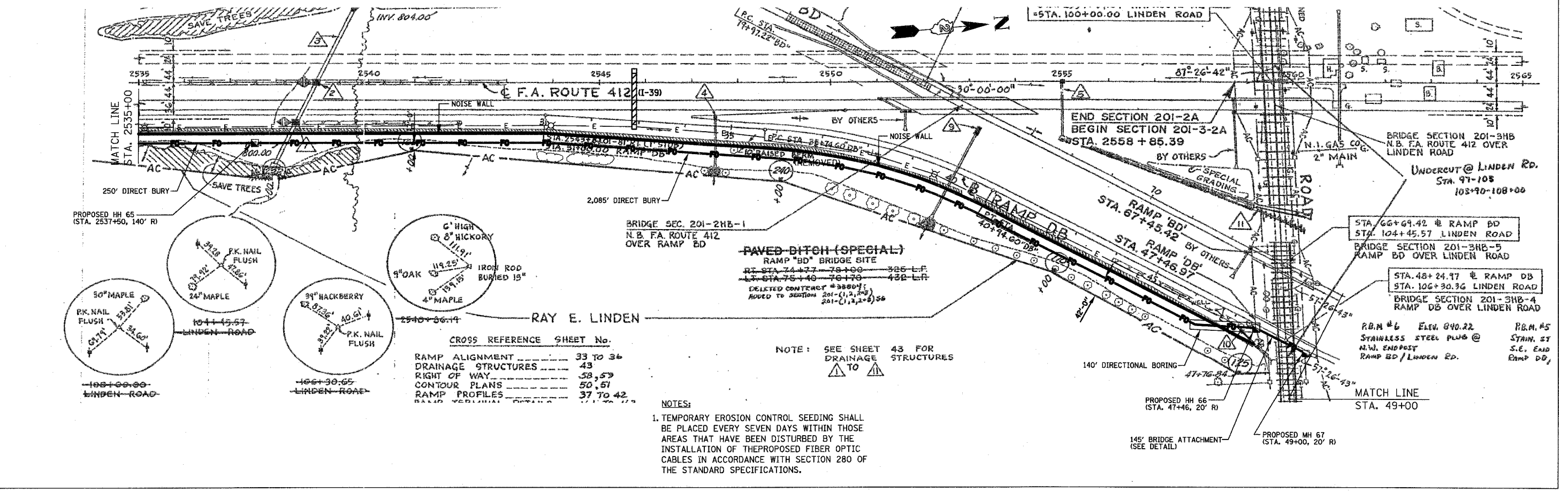
STA. 2522+00 LT.
114' P CUL 2 RCCP 24"
1 MH-TA, 4' DIA WITH MED INL 2250
GRATE ELEV. 808.00 2' LT. INV. 805.00
PRC END SEC. 24"

STA. 2526+00 LT.
116' P CUL 2 RCCP 24"
1 MH-TA, 4' DIA WITH MED INL 2250
GRATE ELEV. 808.70 2' LT. INV. 805.80
PRC FLAR END SEC. 24"

STA. 2537+00
119' P CUL 2 RCCP 36"
1 MH-TA, 4' DIA WITH MED INL 2250
GRATE ELEV. 808.00 2' LT. INV. 805.00
PRC END SEC. 24"

STA. 2526+00 LT.
116' P CUL 2 RCCP 24"
1 MH-TA, 4' DIA WITH MED INL 2250
GRATE ELEV. 808.70 2' LT. INV. 805.80
PRC FLAR END SEC. 24"

STA. 2537+00
119' P CUL 2 RCCP 36"
1 MH-TA, 4' DIA WITH MED INL 2250
GRATE ELEV. 808.00 2' LT. INV. 805.00
PRC END SEC. 24"



PROPOSED HH 65
(STA. 2537+50, 140' R)

PROPOSED HH 64
(STA. 2515+00, 130' R)

PROPOSED HH 66
(STA. 47+46, 20' R)

PROPOSED HH 67
(STA. 49+00, 20' R)

BRIDGE SEC. 201-2HB-1
N.B. FA. ROUTE 412
OVER RAMP DB

PAVED-DITCH (SPECIAL)
RAMP "BD" BRIDGE SITE
RT STA. 74+77 78+00 325 L.F.
LT STA. 75+40 76+70 432 L.F.
DELETED CONTRACT #38001
MOVED TO SECTION 201-(1,2,3,4)
201-(1,2,3,4) 56

NOTE: SEE SHEET 43 FOR DRAINAGE STRUCTURES TO

BRIDGE SECTION 201-3HB-5
RAMP BD OVER LINDEN ROAD

BRIDGE SECTION 201-3HB-4
RAMP DB OVER LINDEN ROAD

STA. 66+64.42 RAMP BD
STA. 104+45.57 LINDEN ROAD

STA. 48+24.77 RAMP DB
STA. 106+30.36 LINDEN ROAD

R.B.M. #6 ELEV. 840.22
STAINLESS STEEL PLUG @
N.W. ENDPOST
RAMP BD / LINDEN RD.

R.B.M. #5
STAIN. ST
S.E. END
RAMP DB

CROSS REFERENCE SHEET No.

RAMP ALIGNMENT	33 TO 36
DRAINAGE STRUCTURES	43
RIGHT OF WAY	58, 59
CONTOUR PLANS	50, 51
RAMP PROFILES	37 TO 42

NOTES:
1. TEMPORARY EROSION CONTROL SEEDING SHALL BE PLACED EVERY SEVEN DAYS WITHIN THOSE AREAS THAT HAVE BEEN DISTURBED BY THE INSTALLATION OF THE PROPOSED FIBER OPTIC CABLES IN ACCORDANCE WITH SECTION 280 OF THE STANDARD SPECIFICATIONS.

PLOT DATE = 12/14/2006
 FILE NAME = G:\ENR\606-8798-13 DDDT.CIV\5\A\B\103\F.L.P.L.25.dgn
 USER NAME = RUSBERG