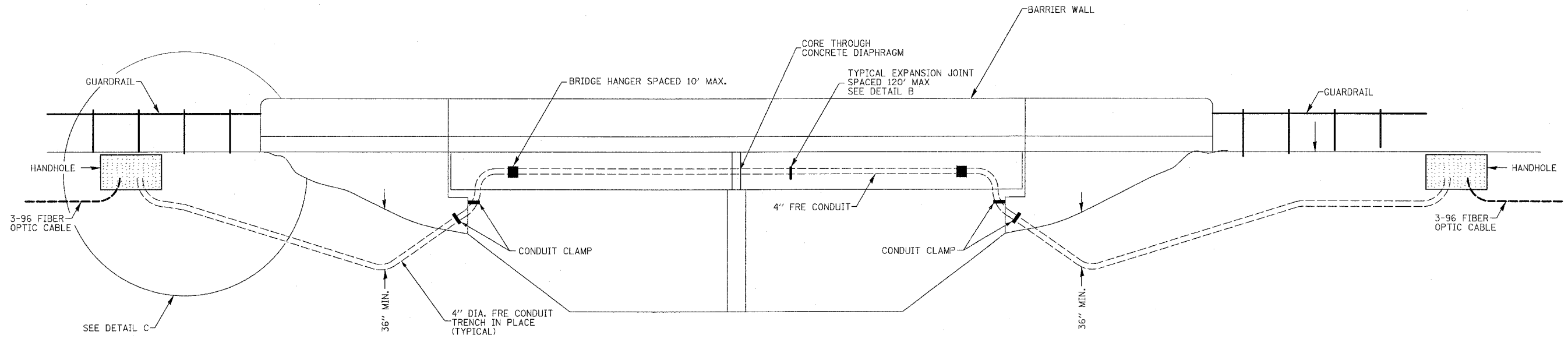
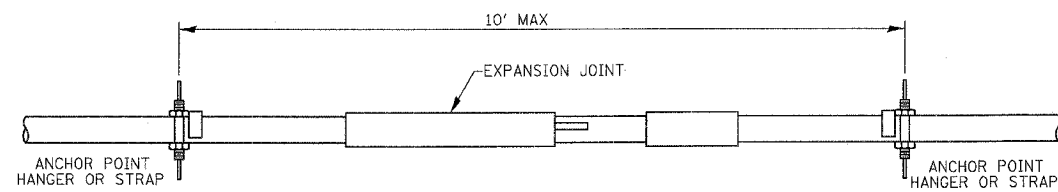
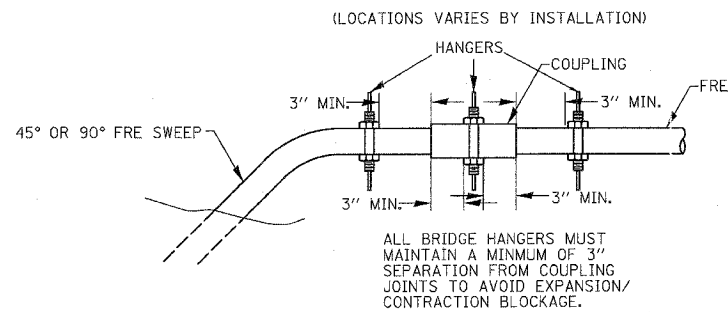


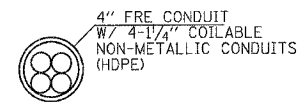
F.A.L. RTE.	SECTION	COUNTY	TOTAL SHEETS	SHEET NO.
1399	141 / 201	141 & 201	46	44
STA.		TO STA.		
FED. ROAD DIST. NO.	ILLINOIS	FED. AID PROJECT		
*OGLE / WINNEBAGO				



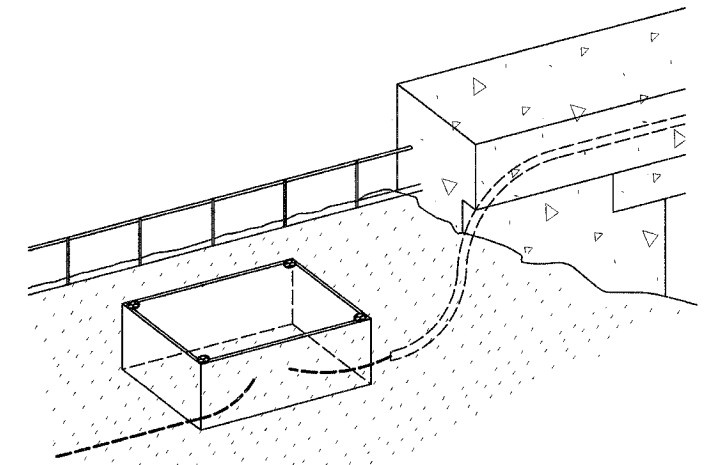
TYPICAL BRIDGE ATTACHMENT DETAIL
NTS



DETAIL B



TYPICAL CONDUIT DETAIL



DETAIL C
NTS

NOTES:

1. ALL MATERIAL INCLUDING BUT NOT LIMITED TO CONDUIT, 4" DIA. FRE CONDUIT, 1-1/4" COILABLE NON-METALLIC CONDUITS, HANGERS, STRAPS, CORING, EXPANSION JOINTS AND INSERTS NECESSARY TO INSTALL THE CONDUIT AND CABLE TO THE STRUCTURE AS SHOWN ON THIS DRAWING IS INCLUDED IN PAY ITEM: "CONDUIT ATTACHED TO BRIDGE STRUCTURE, 4", FIBERGLASS REINFORCED EPOXY. SPECIAL".
2. SEE "KISHWAUKEE RIVER BRIDGE ATTACHMENT DETAILS" (SHEET NO. 43) FOR FIBER OPTIC CONDUIT ATTACHMENT TO THE KISHWAUKEE RIVER BRIDGE STRUCTURE.
3. THE 4" FIBERGLASS REINFORCED EPOXY CONDUIT PLACED IN SOIL CONDITIONS SHALL BE TRENCHED IN PLACE AT A MINIMUM DEPTH OF 36".
4. THE 4" FRE CONDUIT SHALL BE BULLET RESISTENT.

REVISIONS	
NAME	DATE

ILLINOIS DEPARTMENT OF TRANSPORTATION
BRIDGE ATTACHMENT DETAILS

SCALE: VERT. N/A
HORIZ. N/A
DATE: DECEMBER 15, 2006
DRAWN BY: CKL
CHECKED BY: CAC

PLOT DATE = 12/14/2006
FILE NAME = G:\ENGR\06-6798-13\DOT\GIS\SM\SR1044_Details.dwg
USER = USER
PLOTTER = HPGL