

CONSULTANT: RJN: BRANDON L. BUZZELL (630) 682-4700

PROJECT ENGINEER: MASOOD AHMAD

DISTRICT TWO - BUREAU OF DESIGN
SENIOR SQUAD LEADER: SAM ABDULLAH (615) 284-5902

F.A.S. RTE.	SECTION	COUNTY	TOTAL SHEETS	SHEET NO.
55	(102BR-1, 102BR-2, 102BR-3) D	WINNEBAGO	52	1

CONTRACT NO. 64C93

D-92-031-07

STATE OF ILLINOIS
DEPARTMENT OF TRANSPORTATION
DIVISION OF HIGHWAYS

PROPOSED HIGHWAY PLANS

FAS ROUTE 55 (IL 70)
SECTION (102BR-1, 102BR-2, 102BR-3) D
PROJECT BHS- 0055 (104)
WINNEBAGO COUNTY
C-92-026-07

INDEX SHEETS

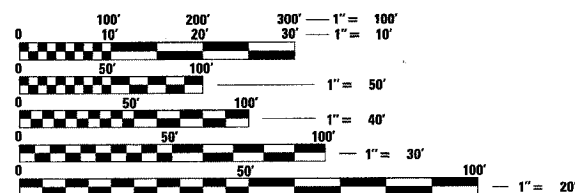
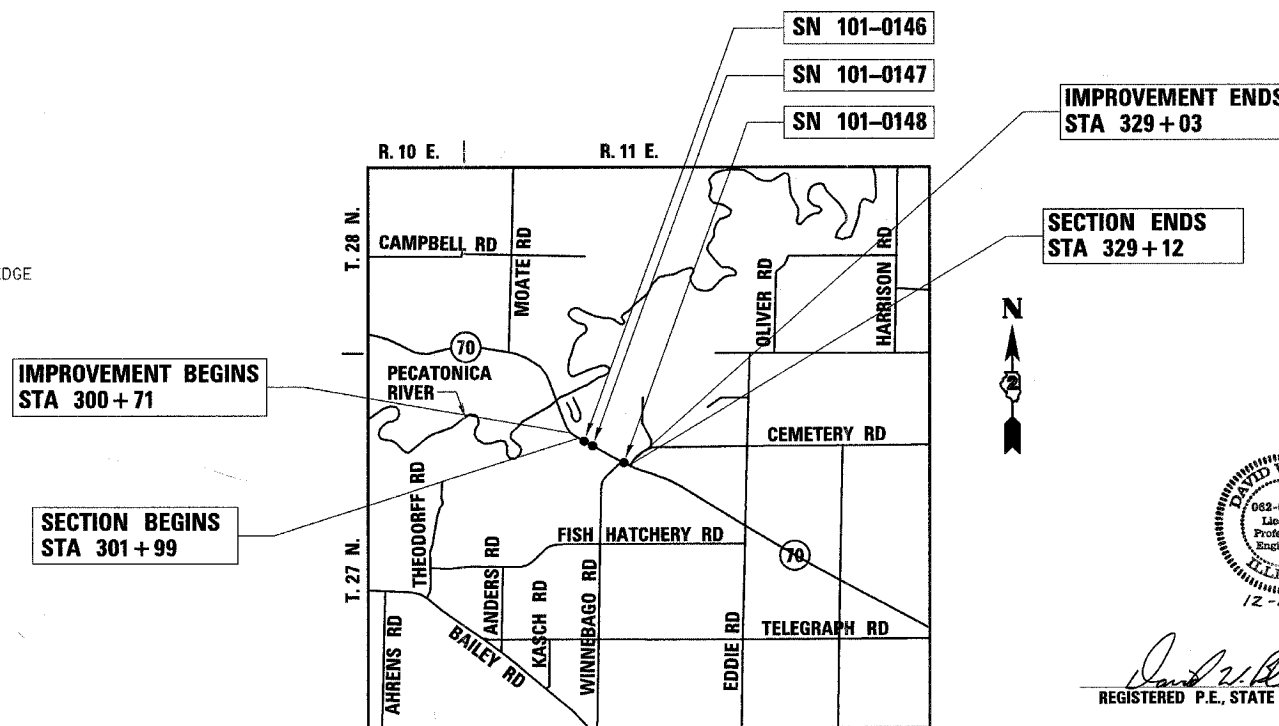
- 1 COVER
- 2 GENERAL NOTES AND TYPICAL SECTION
- 3 SUMMARY OF QUANTITIES
- 4 SCHEDULE OF QUANTITIES
- 5-7 PLAN & PROFILE
- 8-11 TRAFFIC CONTROL / CONSTRUCTION STAGING
- 12-24 BRIDGE PLANS SN 101 - 0146
- 25-36 BRIDGE PLANS SN 101 - 0147
- 37-48 BRIDGE PLANS SN 101 - 0148
- 49-52 DISTRICT 2 STANDARDS

DISTRICT 2 STANDARDS

SHEET NO.	TITLE
23.4	DETAIL OF BITUMINOUS SHOULDER AT GUARDRAIL
39.4	INFORMATIONAL WARNING SIGN (FOR NARROW TRAVEL LANES)
89.4	LETTERING FOR NAME PLATE
99.4	STOP LINE SIGN FOR TEMPORARY SIGNALS
75.2	ENTRANCE SIGN FOR USE WITH TEMPORARY SIGNALS
41.1	TYPICAL PAVEMENT MARKINGS

STATE STANDARDS

000001-04	STANDARD SYMBOLS, ABBREVIATIONS AND PATTERNS
001001-01	AREAS OF REINFORCEMENT BARS
515001-02	NAME PLATE FOR BRIDGES
630001-07	STEEL PLATE BEAM GUARDRAIL
630201-04	PCC/HMA STABILIZATION AT STEEL PLATE BEAM GUARDRAIL
631032-03	TRAFFIC BARRIER TERMINAL, TYPE 6A
631051-01	TRAFFIC BARRIER TERMINAL, TYPE 11
635006-02	REFLECTOR AND TERMINAL MARKER PLACEMENT
635011-01	REFLECTOR MARKER AND MOUNTING DETAILS
701001-01	OFF-ROAD OPERATIONS, 2L, 2W, MORE THAN 4.5 m (15') AWAY
701006-02	OFF-ROAD OPERATIONS, 2L, 2W, 4.5 m (15') TO 600mm (24") FROM PAVEMENT EDGE
701011-01	OFF-ROAD MOVING OPERATIONS, 2L, 2W, DAY ONLY
701201-02	LANE CLOSURE, 2L, 2W, DAY ONLY, FOR SPEEDS ≥ 45 MPH
701301-02	LANE CLOSURE, 2L, 2W, SHORT TIME OPERATIONS
701311-02	LANE CLOSURE, 2L, 2W, MOVING OPERATIONS - DAY ONLY
701321-08	LANE CLOSURE, 2L, 2W, BRIDGE REPAIR WITH BARRIER
702001-06	TRAFFIC CONTROL DEVICES
704001-03	TEMPORARY CONCRETE BARRIER
720011	METAL POSTS FOR SIGNS, MARKERS & DELINEATORS
728001	TELESCOPING STEEL SIGN SUPPORT
729001	APPLICATIONS OF TYPES A & B METAL POSTS (FOR SIGNS & MARKERS)
781001-02	TYPICAL APPLICATIONS RAISED REFLECTIVE PAVEMENT MARKERS



FULL SIZE PLANS HAVE BEEN PREPARED USING STANDARD ENGINEERING SCALES. REDUCED SIZED PLANS WILL NOT CONFORM TO STANDARD SCALES. IN MAKING MEASUREMENTS ON REDUCED PLANS, THE ABOVE SCALES MAY BE USED.

J.U.L.I.E.
JOINT UTILITY LOCATION INFORMATION FOR EXCAVATION
1-800-892-0123

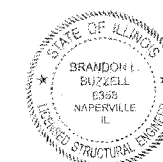
BURRITT TOWNSHIP SECTIONS 5 AND 8

CONTRACT NO. 64C93

SN 101-0146 NET LENGTH = 158 FT = 0.03 MILES
 SN 101-0147 NET LENGTH = 158 FT = 0.03 MILES
 SN 101-0148 NET LENGTH = 158 FT = 0.03 MILES
 GROSS LENGTH = 2,713 FT = 0.51 MILES
 OMISSION LENGTH = 2,239 FT = 0.42 MILES
 NET LENGTH = 474 FT = 0.09 MILES



David W. Bluge
REGISTERED P.E., STATE OF ILLINOIS
11-30-07 EXPIRES



Brandon L. Buzzell
REGISTERED S.E., STATE OF ILLINOIS
11/30/08 EXPIRES

STATE OF ILLINOIS
DEPARTMENT OF TRANSPORTATION
DIVISION OF HIGHWAYS

SUBMITTED *December 13, 2007*

Frank E. Cowan
DEPUTY DIRECTOR OF HIGHWAYS, REGION ENGINEER

Eric E. Haran
ENGINEER OF DESIGN AND ENVIRONMENT

Milton R. See, P.E.
DIRECTOR OF HIGHWAYS, CHIEF ENGINEER

rjngroup
Excellence through Ownership

RJN GROUP, INC.
CONSULTING ENGINEERS
200 W FRONT STREET
WHEATON, IL 60187
PROFESSIONAL DESIGN FIRM
LICENSE NO. 184-000813
EXPIRES 4/30/2007

PRINTED BY THE AUTHORITY OF THE STATE OF ILLINOIS