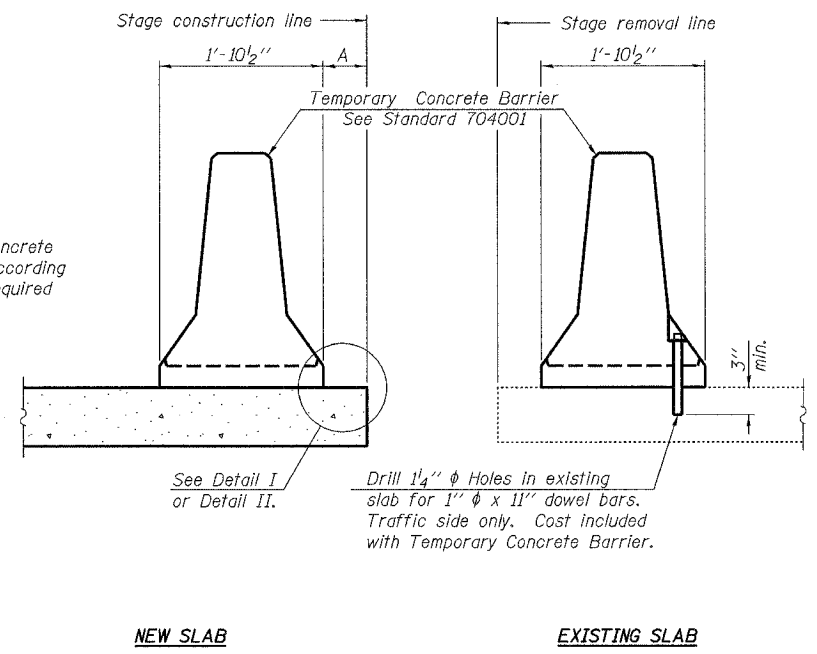


ROUTE NO.	SECTION	COUNTY	SHEET NO.	SHEET NO.
FAS 55	*	WINNEBAGO	23	52
FED. ROAD DIST. NO. 7		ILLINOIS	FED. AID PROJECT	

SHEET NO. 12
13 SHEETS

*(102 BR-1, 102 BR-2, 102 BR-3)D
Contract # 64C93

When "A" is 3'-6" or less, the temporary concrete barrier shall be anchored to the new slab according to Detail I or Detail II. No anchorage is required when "A" is greater than 3'-6".



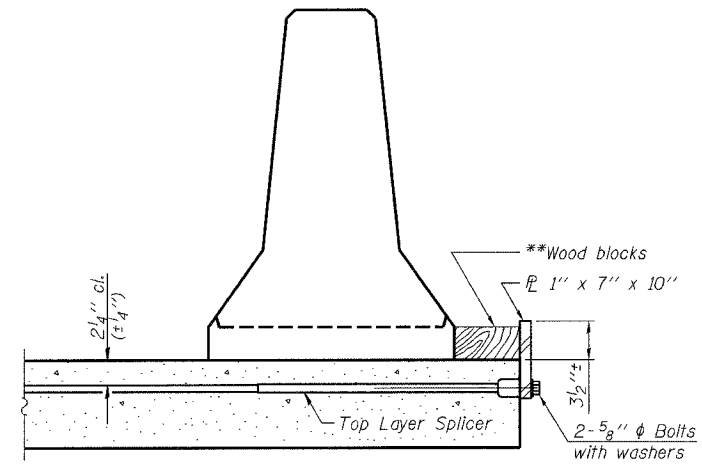
SECTIONS THRU SLAB

NOTES

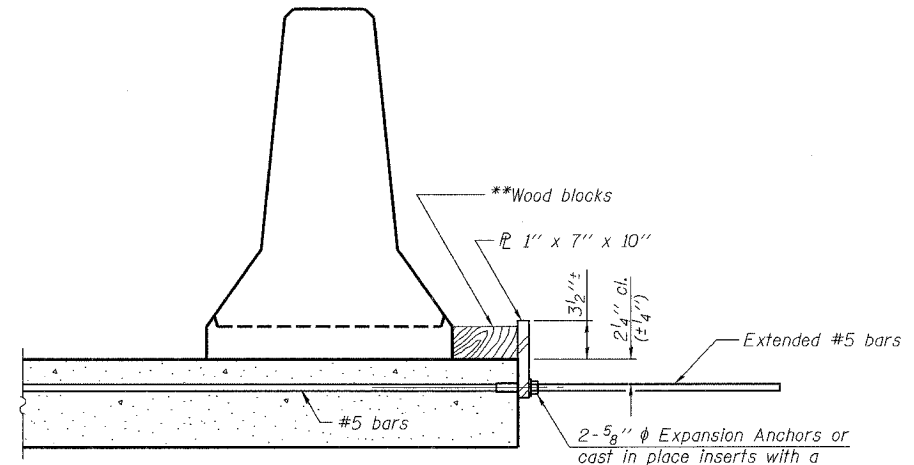
Detail I - With Bar Splicer or Couplers:
Connect one (1) 1"x7"x10" steel PL to the top layer of couplers with 2-5/8" ϕ bolts screwed to coupler at approximate ϕ of each barrier panel.

Detail II - With Extended Reinforcement Bars:
Connect one (1) 1"x7"x10" steel PL to the concrete slab with 2-5/8" ϕ Expansion Anchors or cast in place inserts spaced between the top layer of reinforcement at approximate ϕ of each barrier panel.

Cost of anchorage is included with Temporary Concrete Barrier. The 1" x 7" x 10" plate shall not be removed until stage II construction forms and all reinforcement bars are in place and the concrete is ready to be placed.

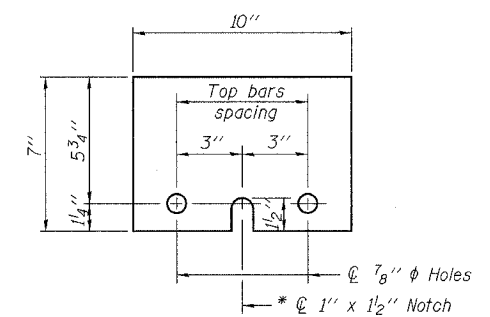


DETAIL I



DETAIL II

** Wood blocks may be omitted when required to provide minimum stage traffic lane width. When the wood blocks are omitted, the concrete barrier shall be in direct contact with the steel retainer plate.



STEEL RETAINER PLATE 1" x 7" x 10"

* Required only with Detail II

<p>Excellence through Ownership</p> <p>200 West Front Street Wheaton, IL 60187</p>	<p>ILLINOIS DEPARTMENT OF TRANSPORTATION TEMPORARY CONCRETE BARRIER FOR STAGE CONSTRUCTION IL-70 OVER TRIBUTARY TO PECATONICA RIVER FAS RTE 55 SECTION (102 BR-1, 102 BR-2, 102 BR-3)D WINNEBAGO COUNTY - STATION 302+76.80 STRUCTURE NO. 101-0146</p>
	<p>DATE: 12/15/2006</p> <p>DRAWN BY LCM CHECKED BY BLB</p>