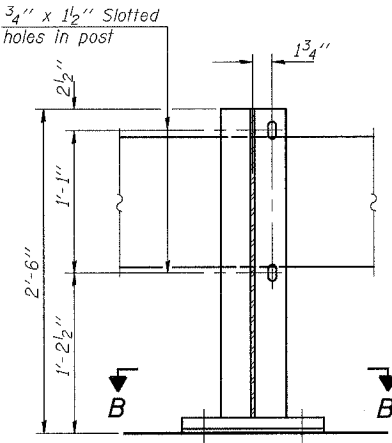


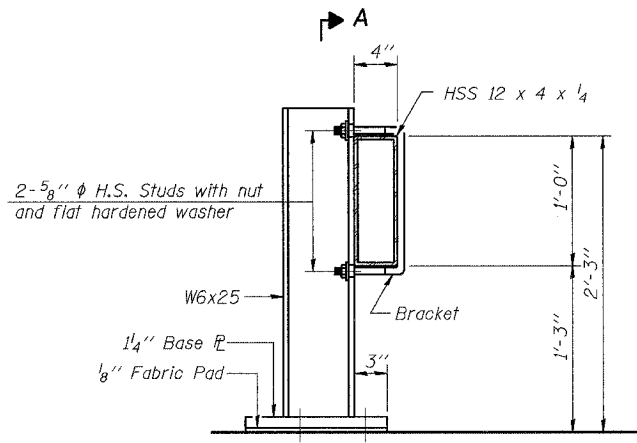
| ROUTE NO. | SECTION | COUNTY | SHEETS | SHEET NO. |
|---------------------------|---------|-----------|--------|-----------|
| FAS 55 | * | WINNEBAGO | 48 | 52 |
| SHEET NO. 12 12 SHEETS | | | | |

FED. ROAD DIST. NO. 7
ILLINOIS
FED. AID PROJECT

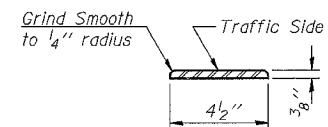
* (102 BR-1, 102 BR-2, 102 BR-3)D
Contract # 64C93



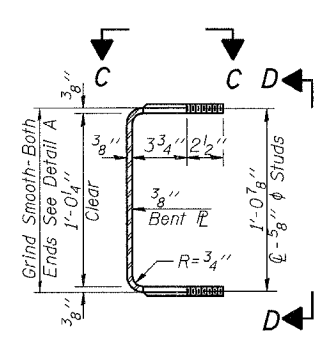
SECTION A-A



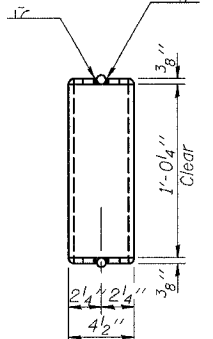
SECTION AT RAIL POST



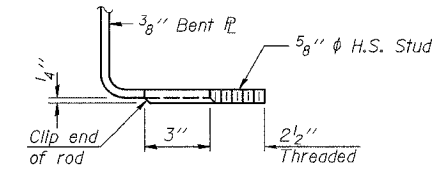
DETAIL A



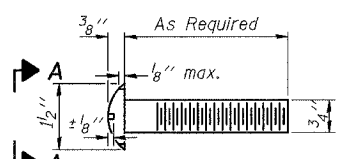
SECTION THRU BRACKET



VIEW D-D

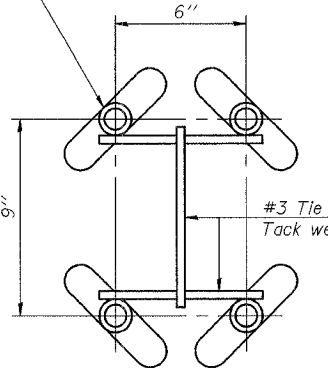


VIEW E-E

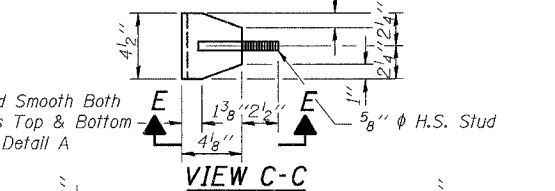


VIEW A-A
ROUND HEAD BOLT

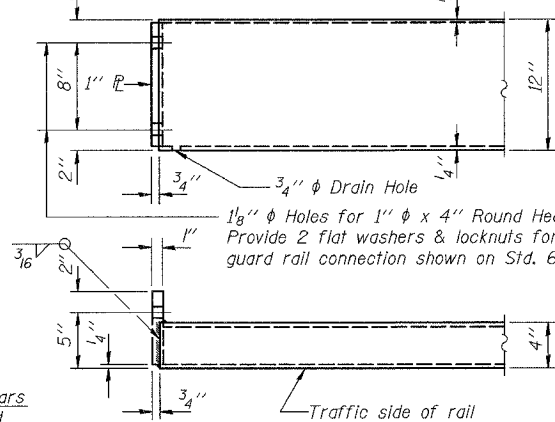
1" ϕ Flared thin slab ferrule insert. Electroplated according to ASTM B 633 Service Condition 4.



INSERT DETAIL

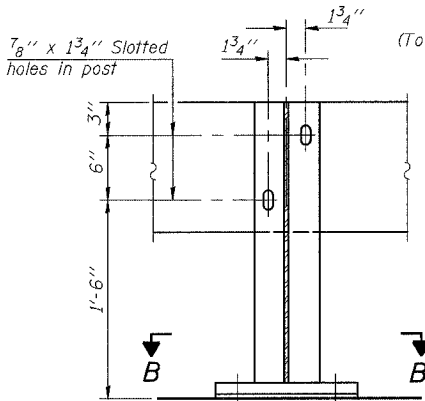


VIEW C-C



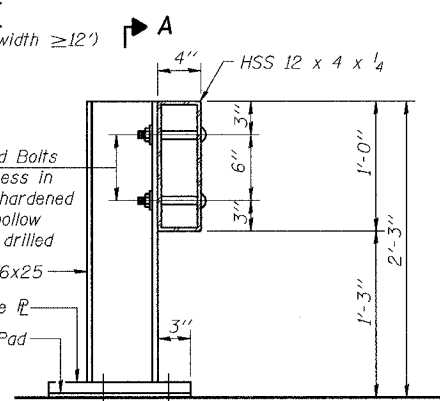
END OF RAIL DETAILS

Notes:
The contact surfaces between post flange, rail and inside face of bracket for Alternate I shall be free of all lubricants.
The nut for 5/8" ϕ high strength studs used in Alternate I to connect bracket to post shall be tightened to a snug fit and given an additional one half turn.
See Roadway plans for locations and quantity.



SECTION A-A

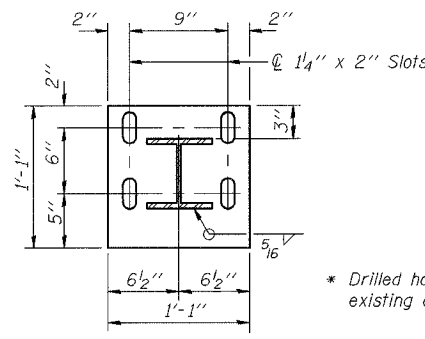
ALTERNATE I
(To be used only for Roadway width $\geq 12'$)



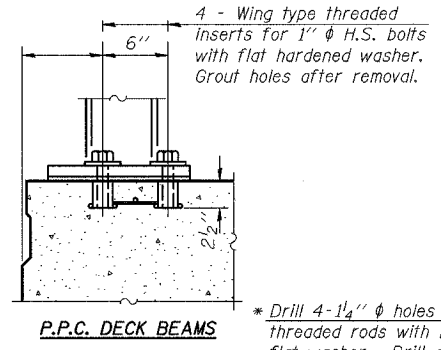
SECTION AT RAIL POST

2-3/4" ϕ x 6" Round Head Bolts (With slot or approved recess in head) with locknut & flat hardened washer. 7/8" ϕ holes in hollow structural section may be drilled in the field.

ALTERNATE II

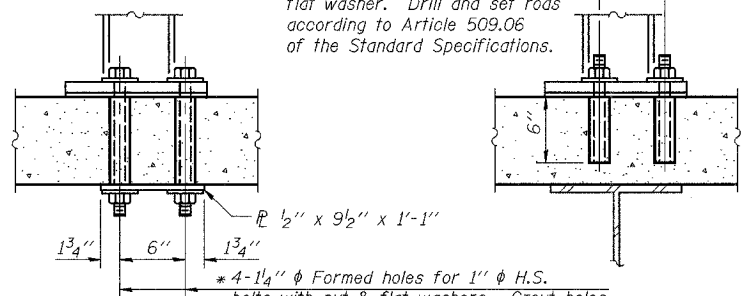


SECTION B-B

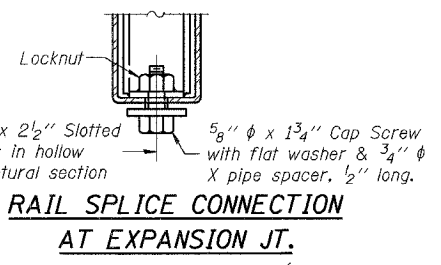


P.P.C. DECK BEAMS

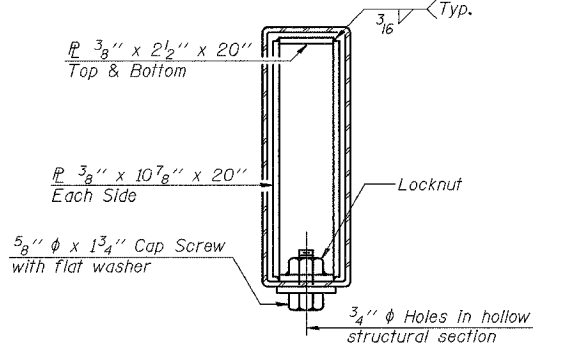
* Drill 4-1 1/4" ϕ holes for 1" ϕ threaded rods with hex nut and flat washer. Drill and set rods according to Article 509.06 of the Standard Specifications.



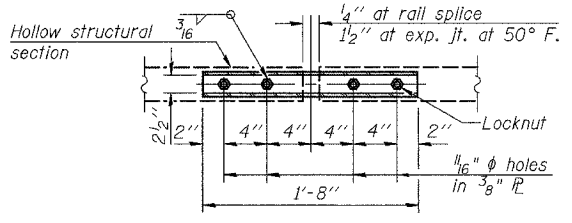
NEW & EXISTING DECKS
ANCHORAGE DETAILS



RAIL SPLICE CONNECTION
AT EXPANSION JT.



SECTION AT RAIL SPLICE



PLAN-BOTT. SPLICE P.
TYPICAL

| | |
|--|---|
| <p>Excellence through Ownership</p> <p>200 West Front Street Wheaton, IL 60187</p> | ILLINOIS DEPARTMENT OF TRANSPORTATION |
| | STEEL RAILING (TEMPORARY) |
| | IL-70 OVER TRIBUTARY TO PECATONIA RIVER |
| | FAS RTE 55 |
| | SECTION (102 BR-1, 102 BR-2, 102 BR-3)D |
| | WINNEBAGO COUNTY |
| | STATION 328+36.90 |
| | STRUCTURE NO. 101-0148 |
| | DATE: 12/15/2006 |
| | DRAWN BY LCM |
| | CHECKED BY BLB |