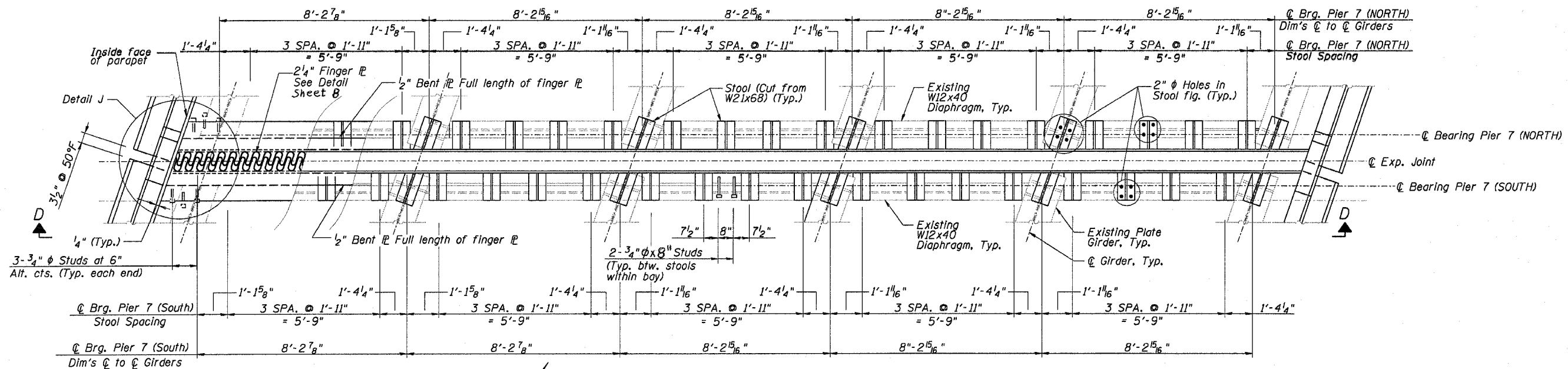
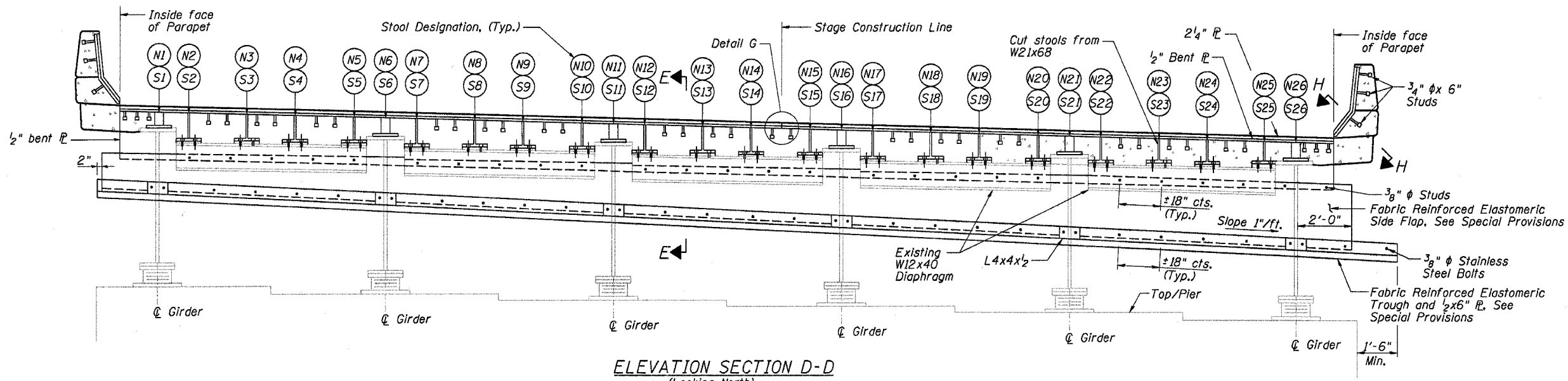


F.A.I. RTE.	SECTION	COUNTY	TOTAL SHEETS	SHEET NO.
80	(81-37-2BRIM	HENRY	14	12
STA. 299+94		TO STA. 311+81		
FED. ROAD DIST. NO. ILLINOIS FED. AID PROJECT				



PLAN OF FINGER PLATE JOINT AT PIER 7



ELEVATION SECTION D-D (Looking North)

- Notes:**
- See sheet 6 for section E-E, detail G, and detail J
 - See sheet 7 for section H-H
 - For stool elevations and heights, see "Stool Variable Table" on sheet 6.

REVISIONS	
NAME	DATE
Rev. 1	1-9-07

ILLINOIS DEPARTMENT OF TRANSPORTATION
 F.A.I. ROUTE - 80
 BRIDGE OVER ROCK RIVER
 SECTION: (81-37-2BRIM)
 FINGERPLATE JOINT REPLACEMENT
 S.N. 037-0022
 JOINT PLAN AND ELEVATION

SCALE: DATE 12/22/06
 DRAWN BY BM
 CHECKED BY KW

I:\Projects\64C95\64C95-001\64C95-001-01\CD\Structural\Drawings\0012_01\1-PlanElevation.dgn
 12/22/2006 09:34:41 PM