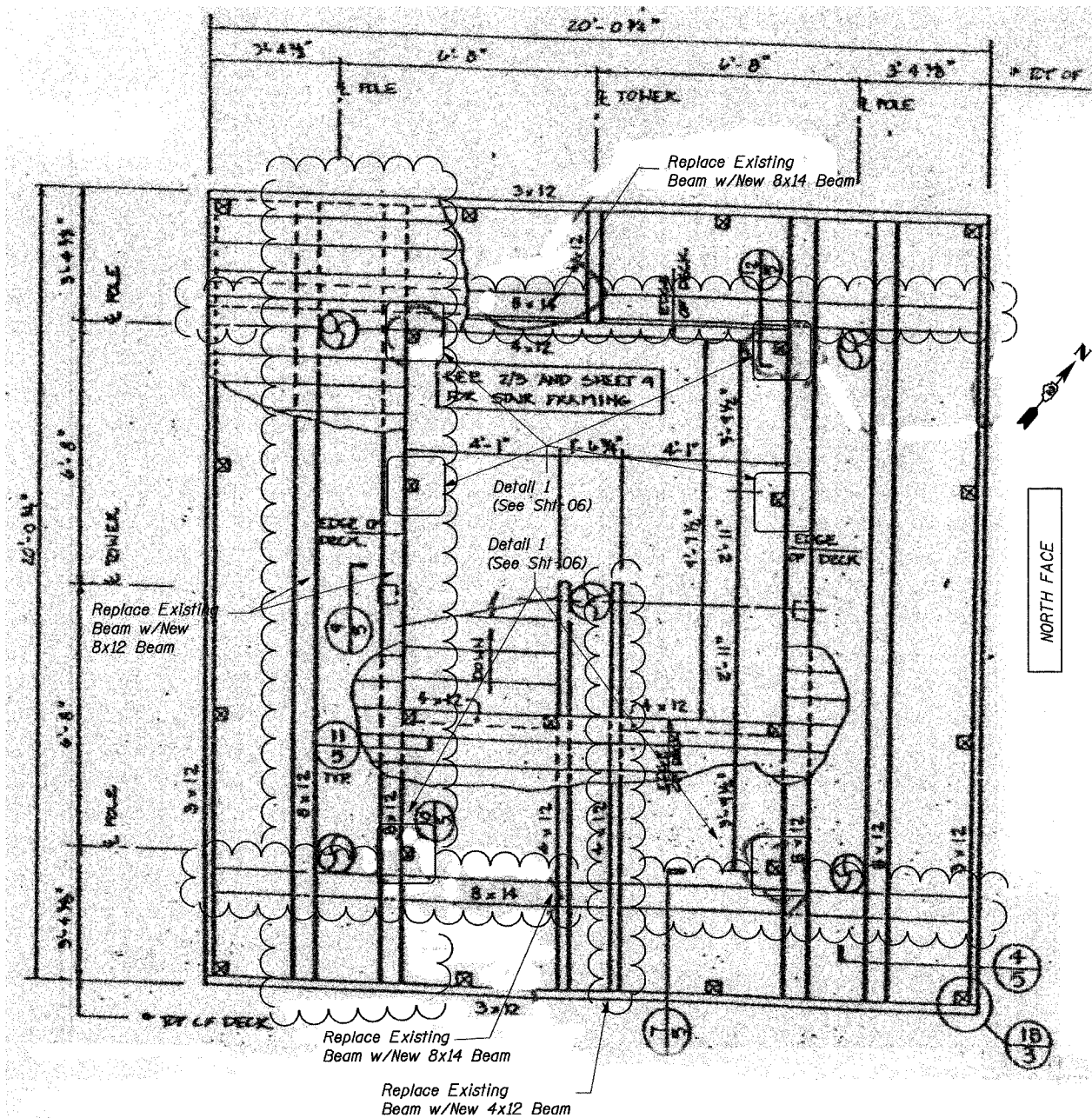


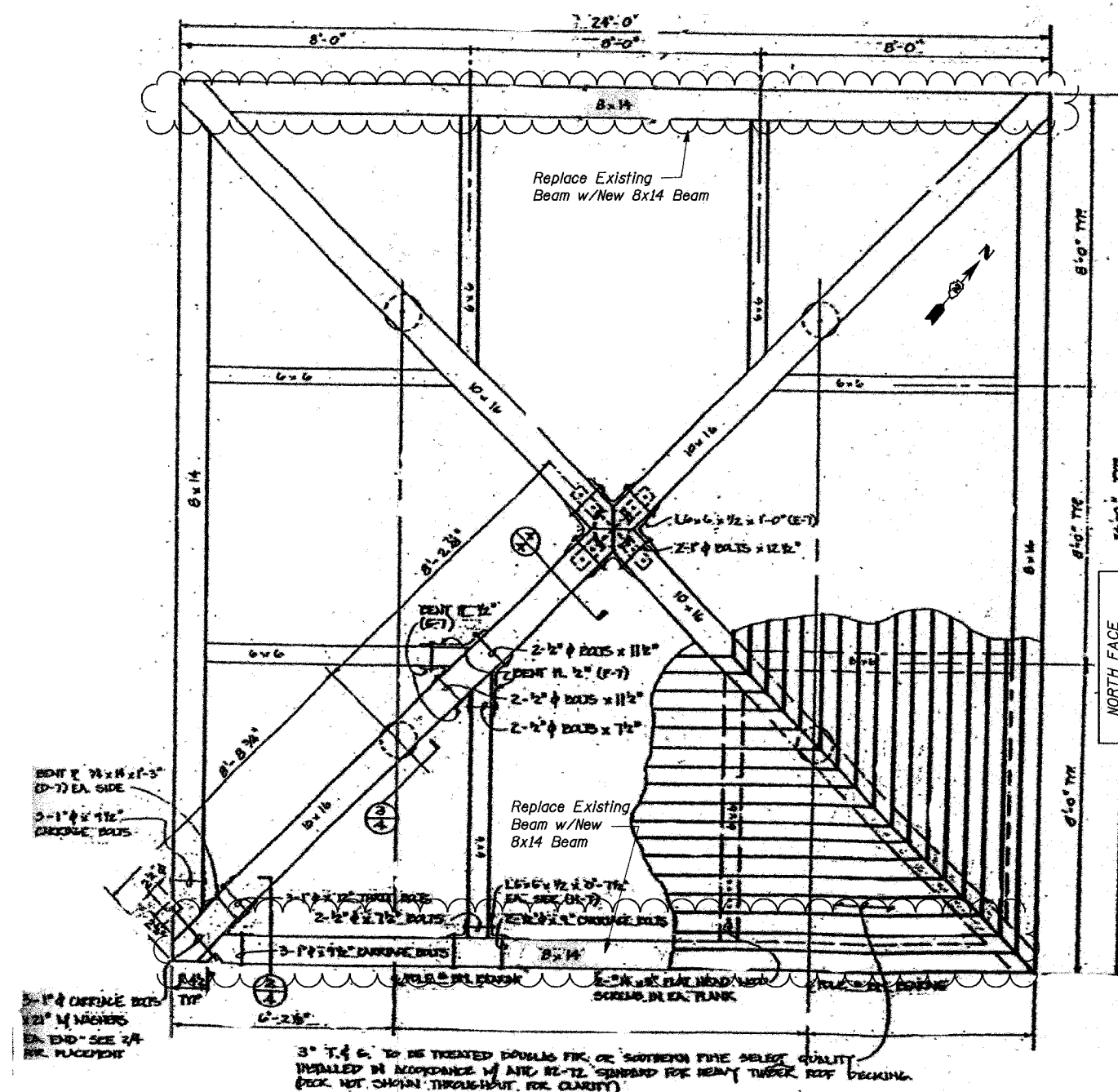
STATE OF ILLINOIS
DEPARTMENT OF TRANSPORTATION

ROUTE NO.	SECTION	COUNTY	TOTAL SHEETS	SHEET NO.
U.S. 20	28-50-M-1	JODAVIESS COUNTY	18	05
FED. ROAD DIST. NO. 7 ILLINOIS FED. AID PROJECT-				
CONTRACT # 64C98				

SHEET NO. 05
18 SHEETS



EXISTING THIRD LEVEL PLATFORM FRAMING PLAN



EXISTING ROOF FRAMING PLAN

DESIGNED	I.L.
CHECKED	H.T.
DRAWN	R.A.
CHECKED	H.T./M.R.

PLATFORM FRAMING PLAN & REPAIR DETAILS
(2 OF 2)

LONGHOLLOW SCENIC OVERLOOK REST AREA
TOWER REPAIRS
FAP RT. 301 (U.S. RT. 20), SECTION 28-50-M-1
JODAVIESS COUNTY

SCALE: NONE DATE: DECEMBER, 2006
Soodan
Soodan & Associates, Inc.
100 North LaSalle Street, Suite 1800
Chicago, Illinois 60602