

CONTRACT NO. 66411				
F.A.S. RTE.	SECTION	COUNTY	TOTAL SHEETS	SHEET NO.
338	34 BR-1	IROQUOIS	37	1

P93-038-99
D-93-014-04

INDEX OF SHEETS

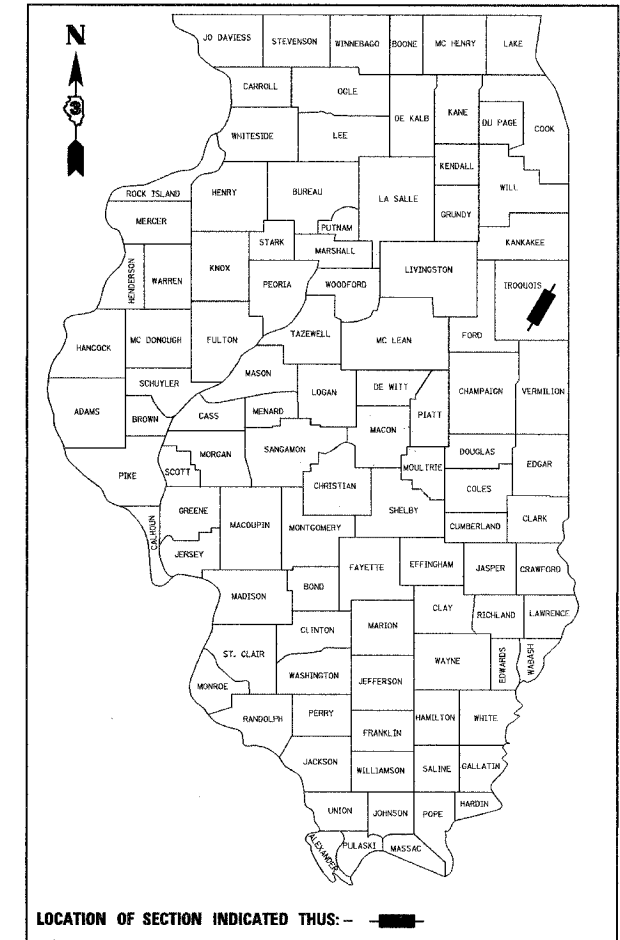
SHEET NO.	DESCRIPTION
ROADWAY PLANS	
1	COVER SHEET
2	GENERAL NOTES AND STANDARDS
3	SUMMARY OF QUANTITIES
4	TYPICAL SECTIONS
5	SCHEDULE OF QUANTITIES
6	ALIGNMENT, TIES AND BENCHMARKS
7-9	PLAN AND PROFILE
10	TRAFFIC CONTROL AND PROTECTION FOR TEMPORARY DETOUR
11	EROSION AND SEDIMENT CONTROL PLAN
12	PLAT OF HIGHWAYS
STRUCTURE PLANS	
13	GENERAL PLAN AND ELEVATION
14	TOP OF SLAB ELEVATIONS
15	SUPERSTRUCTURE
16	SUPERSTRUCTURE DETAILS
17	ABUTMENT PLAN, ELEVATION & DETAILS
18	PIERS
19-20	SOIL BORING LOGS
21-32	EXISTING STRUCTURE PLANS
33-35	CROSS SECTIONS
36-37	CHANNEL CROSS SECTIONS

STATE OF ILLINOIS DEPARTMENT OF TRANSPORTATION DIVISION OF HIGHWAYS PLANS FOR PROPOSED FEDERAL AID HIGHWAY

F.A.S. ROUTE 338 (US 45)
SECTION 34 BR-1
PROJECT RS-0338(104)
BRIDGE REPLACEMENT
IROQUOIS COUNTY

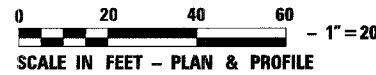
C-93-009-04

BRIDGE REPLACEMENT AT LOUIS CREEK
1.7 MILES NORTH OF BUCKLEY



LOCATION OF SECTION INDICATED THUS:

FUNCTIONAL CLASSIFICATION: MAJOR COLLECTOR (NON-URBAN)
DESIGN SPEED : 55 MPH
POSTED SPEED : 55 MPH
ADT : 1400 (2007)
PV : 66%
SU : 14%
MU : 20%



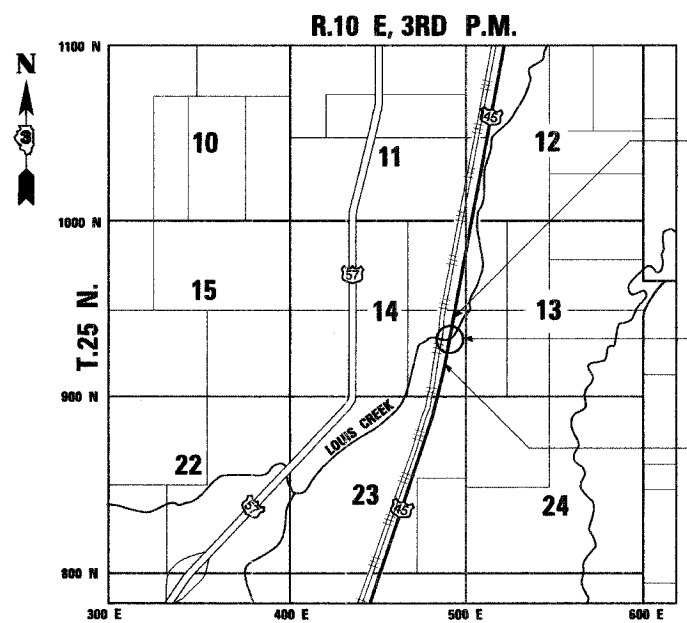
FULL SIZE PLANS HAVE BEEN PREPARED USING STANDARD ENGINEERING SCALES, REDUCED SIZED PLANS WILL NOT CONFORM TO STANDARD SCALES, IN MAKING MEASUREMENTS ON REDUCED PLANS, THE ABOVE SCALES MAY BE USED.

MICROFILMED _____
REEL NUMBER _____
AWARDED _____
RESIDENT ENGINEER _____
AS BUILT CHANGES WERE MADE
ON THE FOLLOWING SHEETS _____

JULIE 1-800-892-0123

DISTRICT 3 NO. (815) 434-6131
PROJECT ENGINEER: JOE KANNEL
UNIT CHIEF: PAT BRABOY
TOWNSHIP: ARTESIA
CONTRACT NO. 66411

PLANS PREPARED BY: SOODAN & ASSOCIATES, INC.
100 NORTH LASALLE ST., SUITE 1800
CHICAGO, ILLINOIS 60602



LOCATION MAP



GROSS LENGTH = 820 FT. = 0.16 MI.
NET LENGTH = 820 FT. = 0.16 MI.

IMPROVEMENTS BEGIN
STA. 1894 + 00.00

EXIST. STRUCTURE NO. 038-0043
PROP. STRUCTURE STA. 1898 + 10.00
THREE SPAN RC SLAB BRIDGE
102'-0" BK TO BK. ABUTMENTS
STR. NO. 038-0212 OVER LOUIS CREEK

IMPROVEMENTS END
STA. 1902 + 20.20

LICENSED PROFESSIONAL ENGINEER
DEVSHI K. ROY
062-047951
STATE OF ILLINOIS
MY license Expires 11-30-07

STATE OF ILLINOIS
DEPARTMENT OF TRANSPORTATION
DIVISION OF HIGHWAYS

SUBMITTED October 26, 2006
Eric E. Harms, DEPUTY DIRECTOR OF HIGHWAYS, REGION ENGINEER
February 2, 2007
Eric E. Harms, ENGINEER OF DESIGN AND ENVIRONMENT
February 8, 2007
Milton R. Seep, P.E., DIRECTOR OF HIGHWAYS, CHIEF ENGINEER

PRINTED BY THE AUTHORITY
OF THE STATE OF ILLINOIS