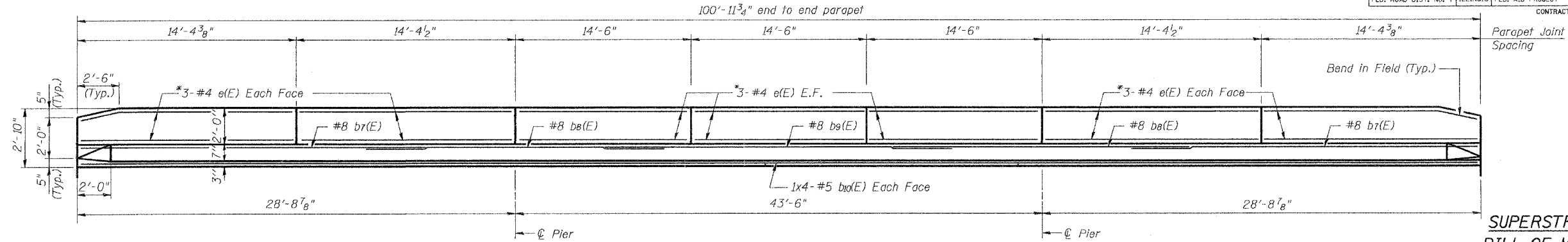


STATE OF ILLINOIS
DEPARTMENT OF TRANSPORTATION

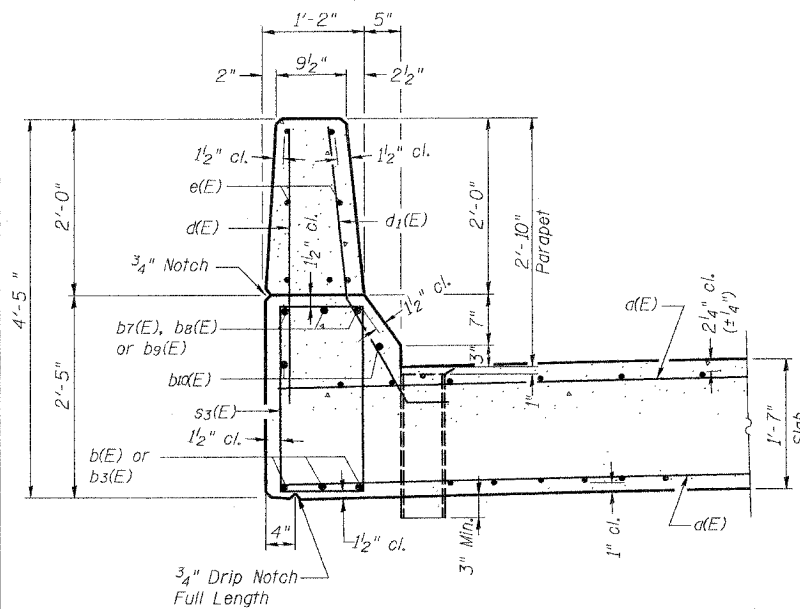
ROUTE NO.	SECTION	COUNTY	TOTAL SHEETS	SHEET NO.	SHEET NO. 4 8 SHEETS
U.S. 45	34 BR-1	IROQUOIS COUNTY	37	16	
FED. ROAD DIST. NO. 7		ILLINOIS	FED. AID PROJECT-		



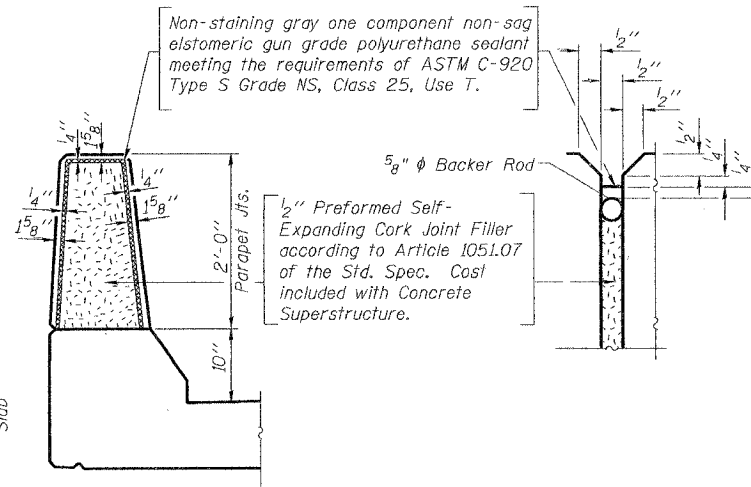
INSIDE ELEVATION OF PARAPET

SUPERSTRUCTURE
BILL OF MATERIAL

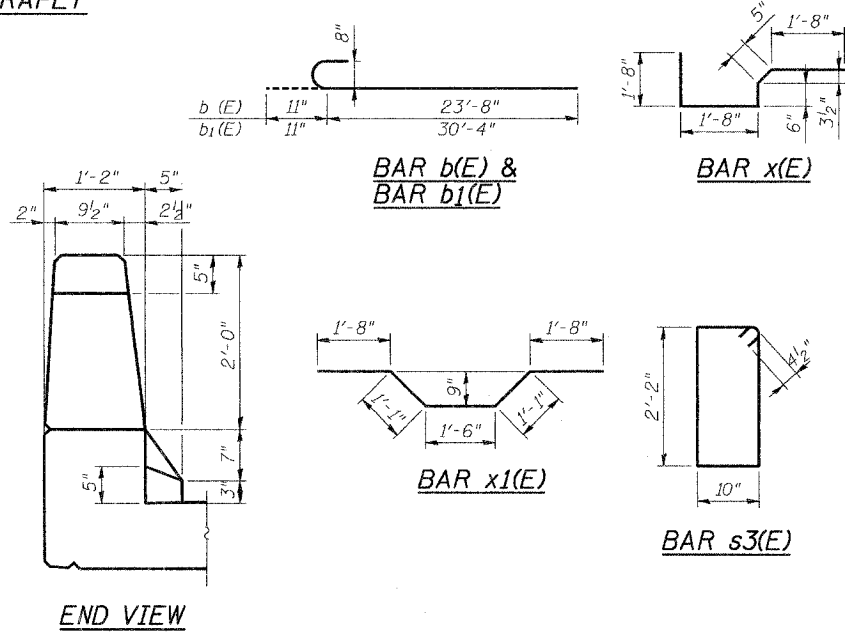
Bar	No.	Size	Length	Shape
a(E)	170	#5	34'-11"	—
a1(E)	8	#5	36'-2"	—
b(E)	64	#8	24'-7"	C
b1(E)	78	#8	31'-3"	—
b2(E)	32	#8	33'-0"	—
b3(E)	39	#8	46'-11"	—
b4(E)	72	#8	19'-9"	—
b5(E)	142	#8	24'-6"	—
b6(E)	36	#8	25'-10"	—
b7(E)	12	#8	20'-9"	—
b8(E)	12	#8	24'-6"	—
b9(E)	6	#8	27'-10"	—
b10(E)	16	#5	26'-6"	—
c(E)	222	#4	2'-9"	—
d1(E)	210	#5	3'-8"	—
d2(E)	12	#5	3'-7"	—
*e(E)	84	#4	14'-3"	—
s3(E)	154	#4	6'-9"	—
x(E)	72	#5	5'-11"	—
x1(E)	72	#5	7'-0"	—
ITEM	UNIT	QUANTITY		
Reinforcement Bars, Epoxy Coated	Pound	46,530		
Concrete Superstructure	Cu. Yds.	239.0		
Floor Drains	Each	10		



SECTION THRU PARAPET



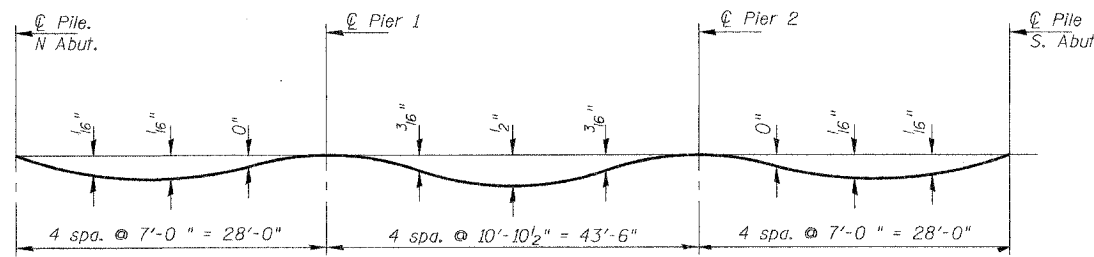
PARAPET JOINT DETAILS



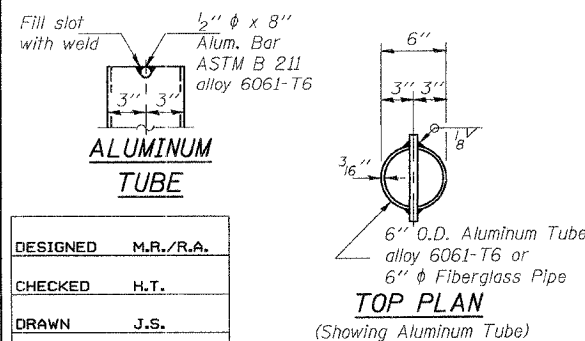
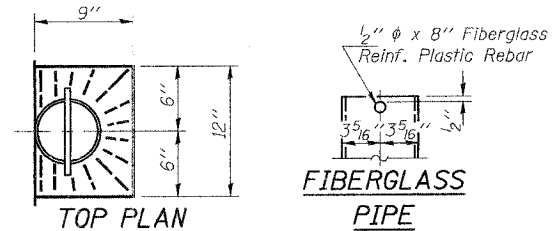
Notes:

The exterior surfaces of the floor drains shall be coated or pigmented by the manufacturer with a color that matches the concrete.

Fiberglass pipe shall conform to ASTM D 2996, with short-time rupture strength hoop tensile stress of 30,000 p.s.i. minimum.



DEAD LOAD DEFLECTION DIAGRAM



DESIGNED	M.R./R.A.
CHECKED	H.T.
DRAWN	J.S.
CHECKED	H.T./M.R.

S-2-D 8-02-04

MIN. BAR LAP

- #4 = 1'-4"
- #5 = 1'-8"
- #6 = 2'-0"
- #7 = 2'-8"
- #8 = 3'-5"
- #9 = 4'-5"

SUPERSTRUCTURE DETAILS

U.S. 45 OVER LOUIS CREEK
FAS ROUTE 338 (U.S. 45), SECTION 34 BR-1
IROQUOIS COUNTY
STATION 1898+10.00
STRUCTURE NO. 038-0212

SCALE: NONE DATE: OCTOBER, 2006
Soodan Soodan & Associates, Inc. 100 North LaSalle Street, Suite 1800 Chicago, Illinois 60602