

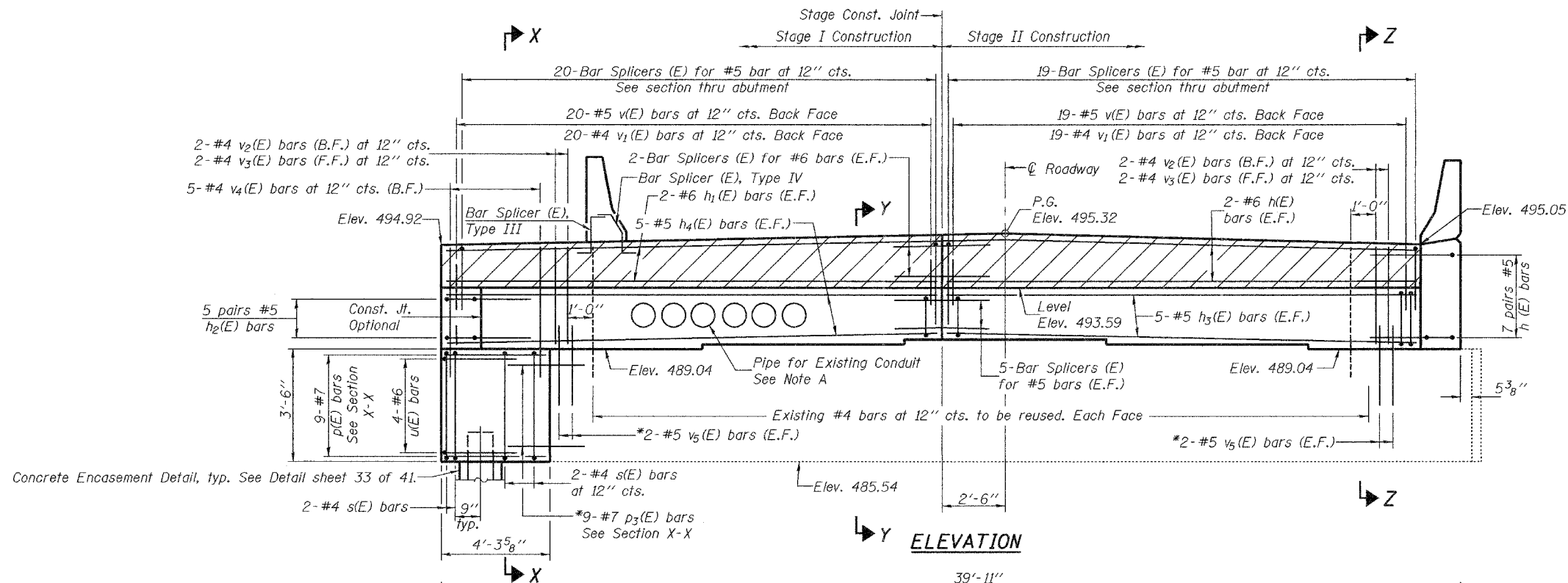
STATE OF ILLINOIS
DEPARTMENT OF TRANSPORTATION

ROUTE NO.	SECTION	COUNTY	TOTAL SHEETS	SHEET NO.
FAP 623	X-IBR	LaSalle	126	81
FED. ROAD DIST. NO. 7	ILLINOIS	FED. AID PROJECT-		

SHEET NO. 32

41 SHEETS

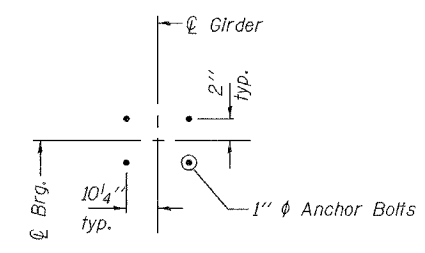
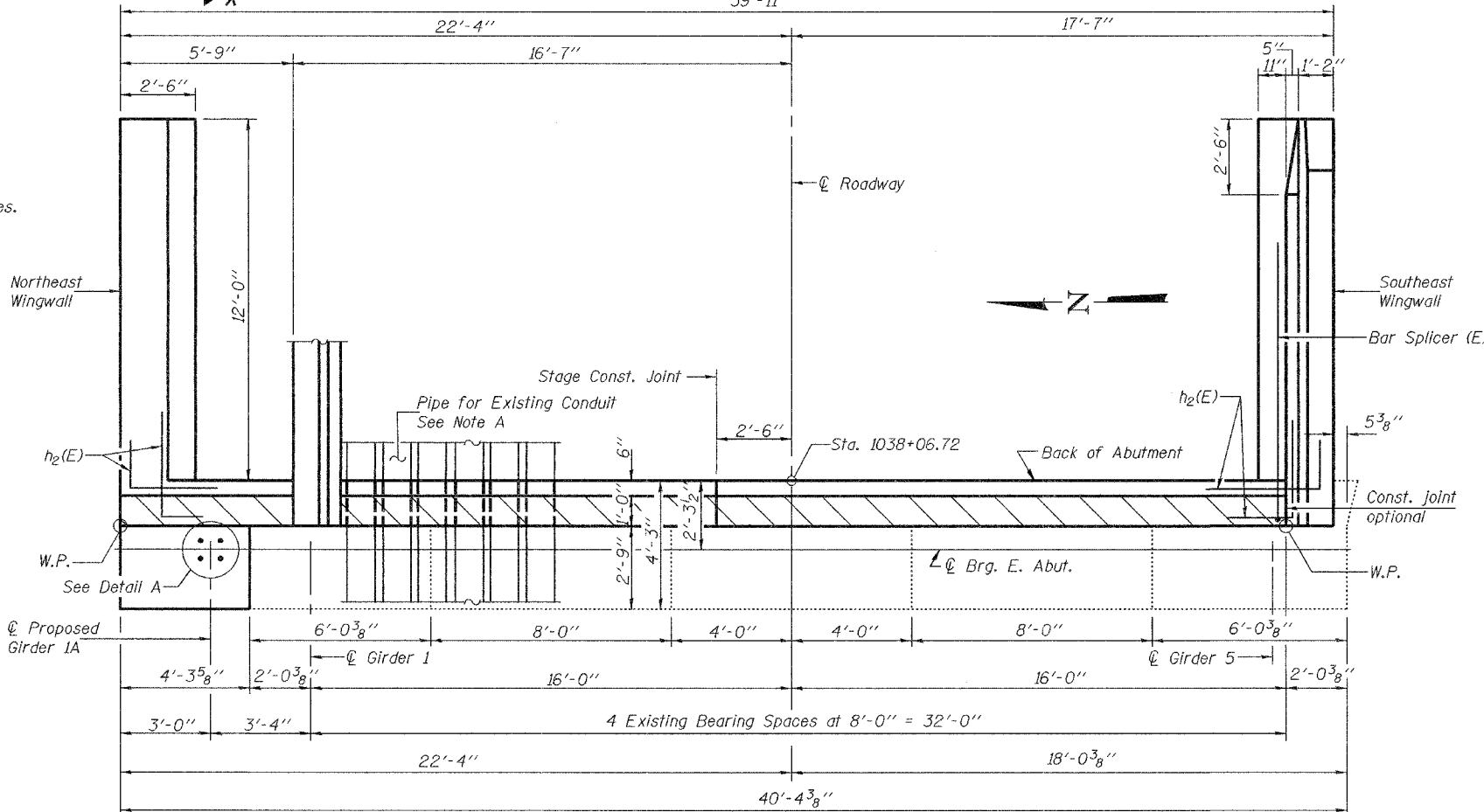
Contract #66617



Notes:
See sheet 37 and 38 of 41 for Bar Splicer Detail.
See sheets 27 and 28 of 41 for Concrete Removal Details.
See sheet 26 of 41 for Anchor Bolt Installation.
See sheets 34 and 35 of 41 for Wingwall Details.
See sheet 34 of 41 for Section X-X.
See sheet 35 of 41 for Sections Y-Y and Z-Z.
Hatched area to be poured after superstructure forms have been removed. Quantity of concrete included with Concrete Superstructures.
Space reinforcement in cap to miss anchor bolts.

*Epoxy grout v₅(E) and p₃(E) bars in min. 9" drilled holes according to Sec. 584 of the Standard Specifications. Cost of hole drilling and epoxy grout included with Reinforcement Bars, Epoxy Coated.

Note A:
The existing conduits shall remain in place. The utility will provide temporary support of the conduit during removal and construction operations. The Contractor shall coordinate with the utility. The cost of any additional incidental work necessary for the contractor to work with and around the utility and its equipment and materials is included in the pay item Utility Attachment.
Provide standard pipe 5" φ for each conduit. See sheet 34 of 41 for individual details.
Reinforcement shall be placed to miss conduit.



DETAIL A
Typical for Girders 1A and 1 thru 5.

DESIGNED	F.T.
CHECKED	S.M.R.
DRAWN	BECKY M. LEACH
CHECKED	F.T./S.M.R.

February 1, 2007
EXAMINED *Thomas J. Demagala*
PASSED *Ralph E. Anderson*
ENGINEER OF BRIDGES AND STRUCTURES

EAST ABUTMENT
F.A.P. ROUTE 623 - SECTION X-IBR
LaSALLE COUNTY
STATION 1036+60.72
STRUCTURE NO. 050-0094

TOP VIEW