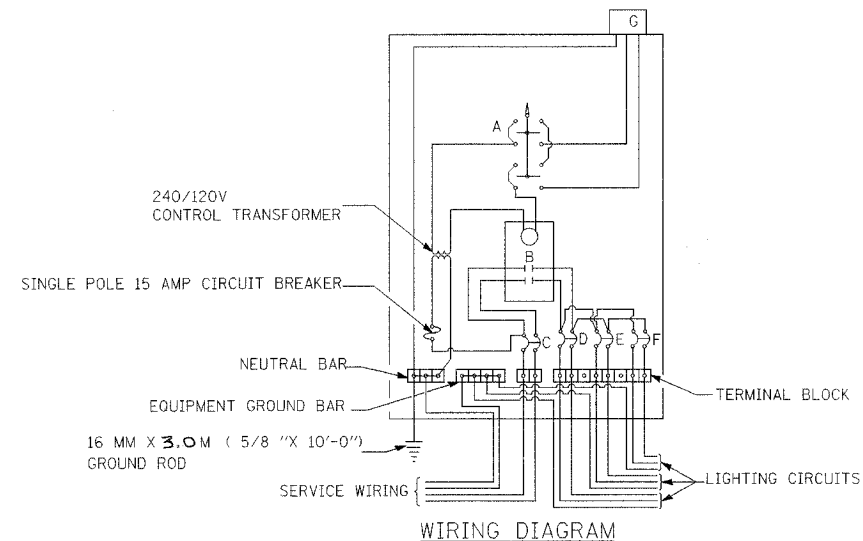
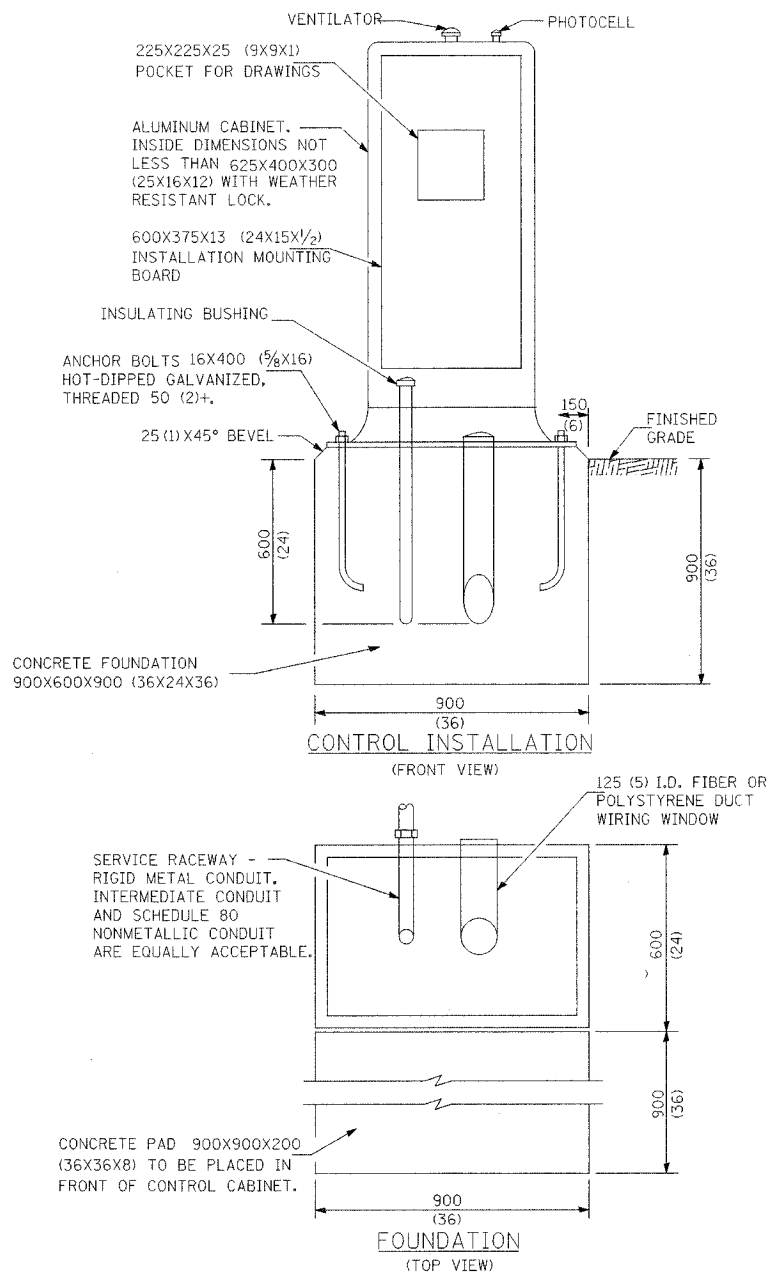
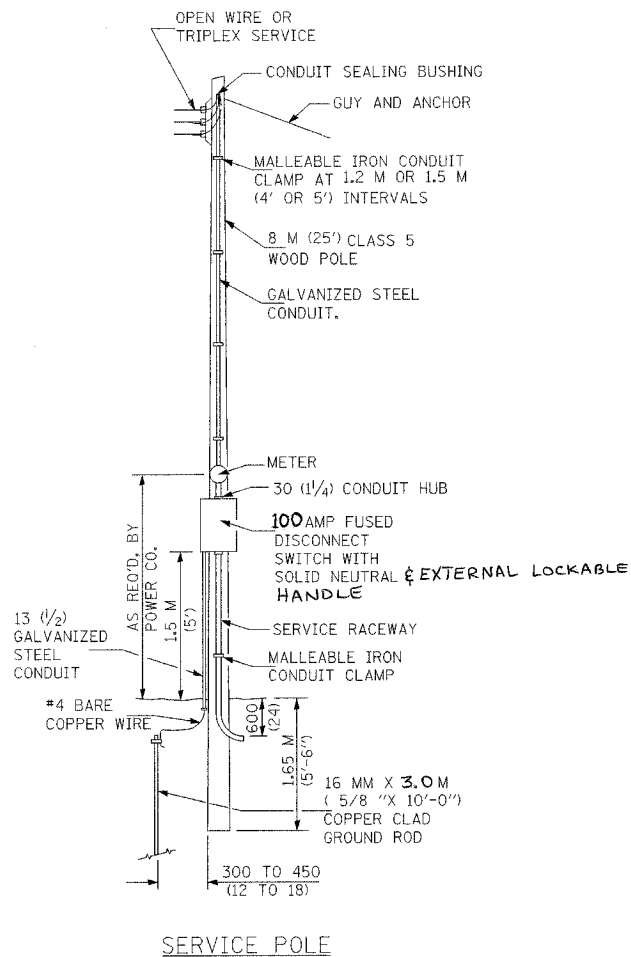


F.A. RTE.	SECTION	COUNTY	TOTAL SHEETS	SHEET NO.
5605	(TX-1, 17)L	Bureau of LASALLE	14	9
STA.		TO STA.		
FED. ROAD DIST. NO. - ILLINOIS FED. AID PROJECT				

PLAN	BY	DATE
REVISIONS	NO.	DATE
1		
2		

PROFILE	BY	DATE
REVISIONS	NO.	DATE
1		
2		

- A SELECTOR SWITCH
- B 2 POLE 100 AMP CONTACTOR
- C 2 POLE 100AMP MAIN BREAKER
- D,E,F 2 POLE 30 AMP BRANCH BREAKERS
- G PHOTOCELL W/INTEGRAL SURGE ARRESTER



GENERAL NOTES

LOCATE SERVICE POLE AND CONTROL INSTALLATION ADJACENT TO R.O.W. LINE WITH A MINIMUM DISTANCE OF 9 M (30') FROM THE EDGE OF PAVEMENT. EXACT LOCATION SHALL BE ESTABLISHED BY THE ENGINEER.

THE UNDERGROUND SERVICE ENTRANCE WIRING SHALL NOT EXCEED 46 M (150'). TOTAL AERIAL AND UNDERGROUND SERVICE BETWEEN THE CONTROL INSTALLATION AND PRIMARY TRANSFORMER SHALL NOT EXCEED 76 M (250').

RACEWAYS SHALL TERMINATE 75 (3) ABOVE TOP OF CONCRETE FOUNDATION.

ALL DIMENSIONS ARE IN MILLIMETERS UNLESS OTHERWISE SHOWN.

Ciorba Group, Inc.
 CONSULTING ENGINEERS
 5507 North Cumberland Avenue, Suite 402 Chicago, Illinois 60656
 Tel. 773.775.4009 Fax 773.775.4014 Email chicago@ciorba.com

ILLINOIS DEPARTMENT OF TRANSPORTATION
 U.S. ROUTE 6 (SPRING VALLEY) LIGHTING

LIGHTING DETAILS

REVISIONS	
NAME	DATE

SCALE: NONE
 DATE: DEC. 2006

DRAWN BY: MLB
 CHECKED BY: JMW

DATE: 12/19/2006
 FILENAME: I:\01\10251\lighting\dwg\lighting\01-06.dwg