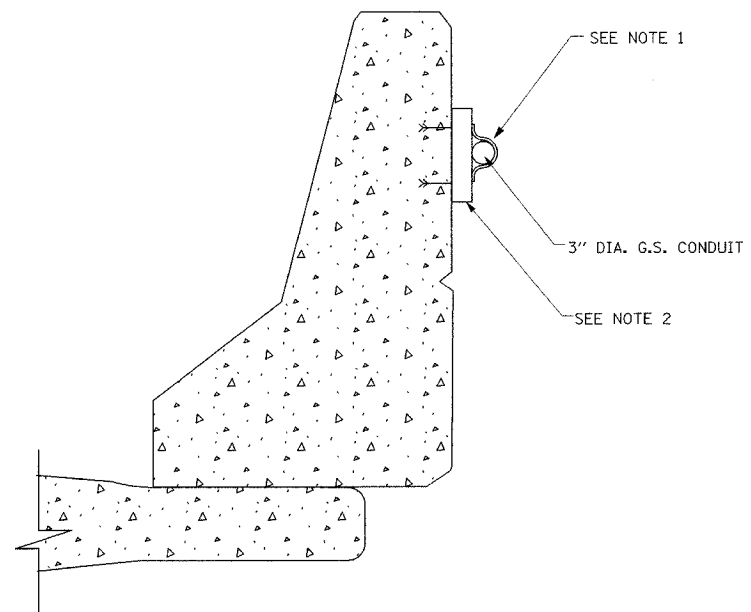


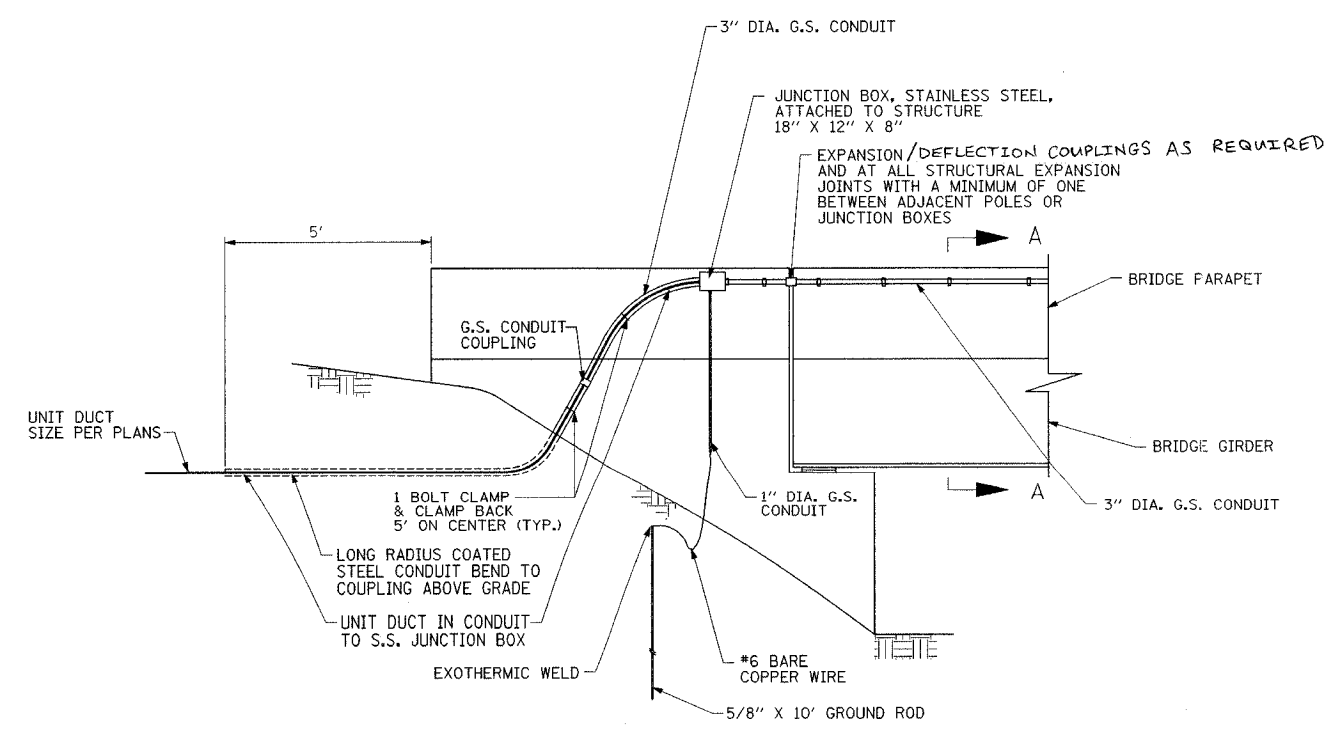
CONTRACT NO. 66642			
F.A. RTE.	SECTION	COUNTY	TOTAL SHEETS
5605	(TX-1, 17)L	BUREAU & LASALLE	14
NO.			12
STA.	TO STA.		
FED. ROAD DIST. NO.	ILLINOIS	FED. AID PROJECT	

PLAN	DATE
BY	
REVISIONS	
CHANGED	
CHECKED	
DATE	
NO.	

PROFILE	DATE
BY	
REVISIONS	
CHANGED	
CHECKED	
DATE	
NO.	



- NOTES:**
1. PIPE SUPPORT (HOT DIPPED GALVANIZED AFTER FABRICATION), MINIMUM SIZE EQUAL TO PIPE DIAMETER. MOUNT TO CHANNEL WITH TWO 3/8" STAINLESS STEEL CLAMPING NUTS, HEX HEAD CAP SCREW & LOCK WASHER, MOUNTED ON 5' CENTERS.
 2. STAINLESS STEEL CHANNEL 10" LONG MOUNTED EXTERNALLY ON BRIDGE PARAPET. INSTALL ON 5'-0" CENTERS. ATTACHED TO BRIDGE PARAPET WITH 1/2" DIA. EXPANSION ANCHORS, MIN. 2" LONG. EXPANSION ANCHORS SHALL BE HOT DEEP GALVANIZED AFTER FABRICATION.



TYPICAL WINGWALL CONDUIT TRANSITION
NOT TO SCALE

DATE: 12/19/2006
FILENAME: I:\proj\2006\121906\Lighting\Detail\2006-1219-06.dwg

REVISIONS	
NAME	DATE

Ciorba Group, Inc.
CONSULTING ENGINEERS
5507 North Cumberland Avenue, Suite 402 Chicago, Illinois 60656
Tel. 773.775.4009 Fax 773.775.4014 Email: chicago@ciorba.com

ILLINOIS DEPARTMENT OF TRANSPORTATION
U.S. ROUTE 6 (SPRING VALLEY) LIGHTING

LIGHTING DETAILS

SCALE: NONE
DATE: DEC. 2006
DRAWN BY: MLB
CHECKED BY: JMW