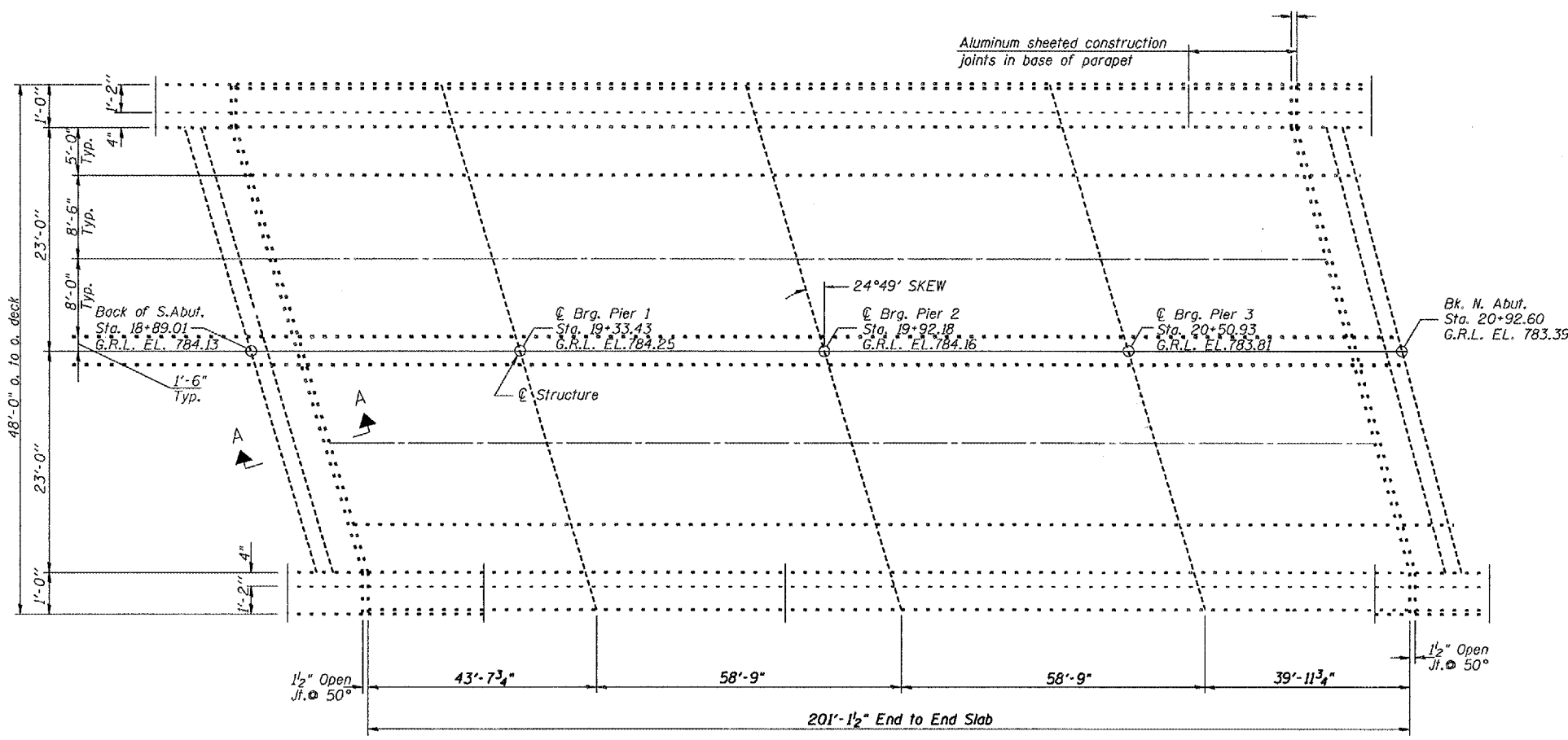
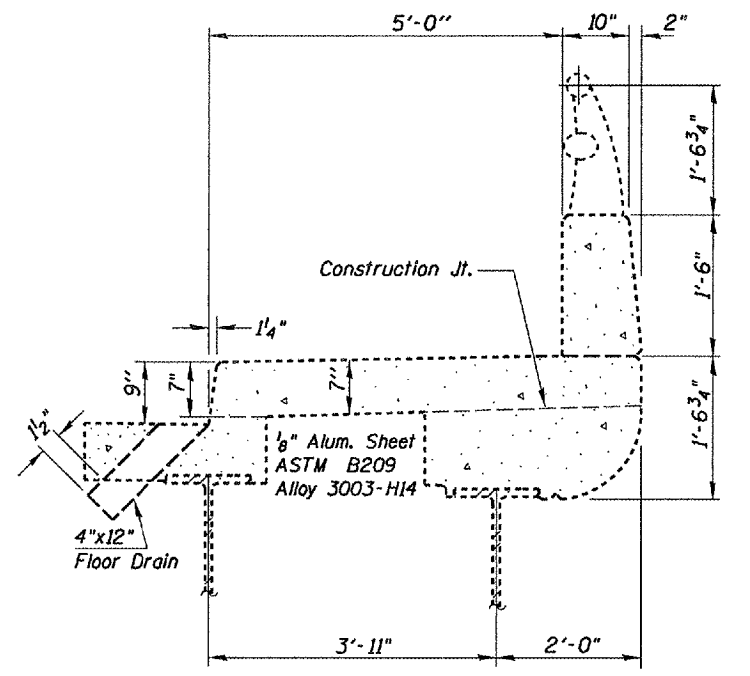


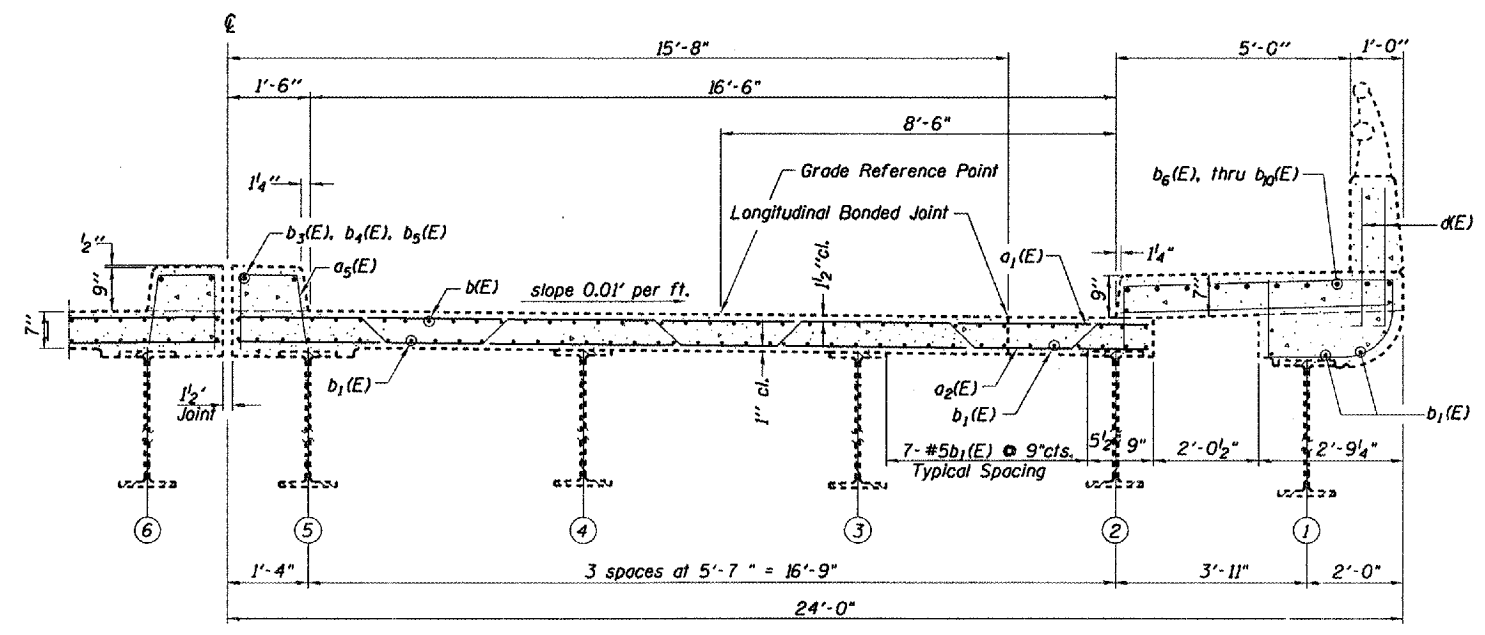
F.A.P. RTE.	SECTION	COUNTY	TOTAL SHEETS	SHEET NO.
313	*	KNOX	11	4
STA. 18+89.01		TO STA. 20+92.60		
FED. ROAD DIST. NO. 4 ILLINOIS FED. AID PROJECT				
• 04 BRIDGE REPAIR 2007-1				



PLAN



CURB DETAIL



HALF CROSS SECTION
(Looking North)

Notes:
Reinforcement bars designated (E) shall be epoxy coated.
Bars indicated thus 20 x 3-#5 etc. indicates 20 lines of bars with 3 lengths per line.
Section views drawn "FOR INFORMATION ONLY" to be used as reference for beam repair.

REVISIONS	
NAME	DATE

ILLINOIS DEPARTMENT OF TRANSPORTATION

TYPICALS

SCALE: VERT. DRAWN BY CEJ
 HORIZ. CHECKED BY
 DATE 12-04-2006

FOR REFERENCE ONLY

PLOT DATE: NOTES:
 FILE NAME: * DETAILS
 PLOT SCALE: * SCALES
 REFERENCE: * REF'S

F.A.P. RT. 313
 KNOX COUNTY
 S.N. 048-0068