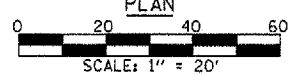
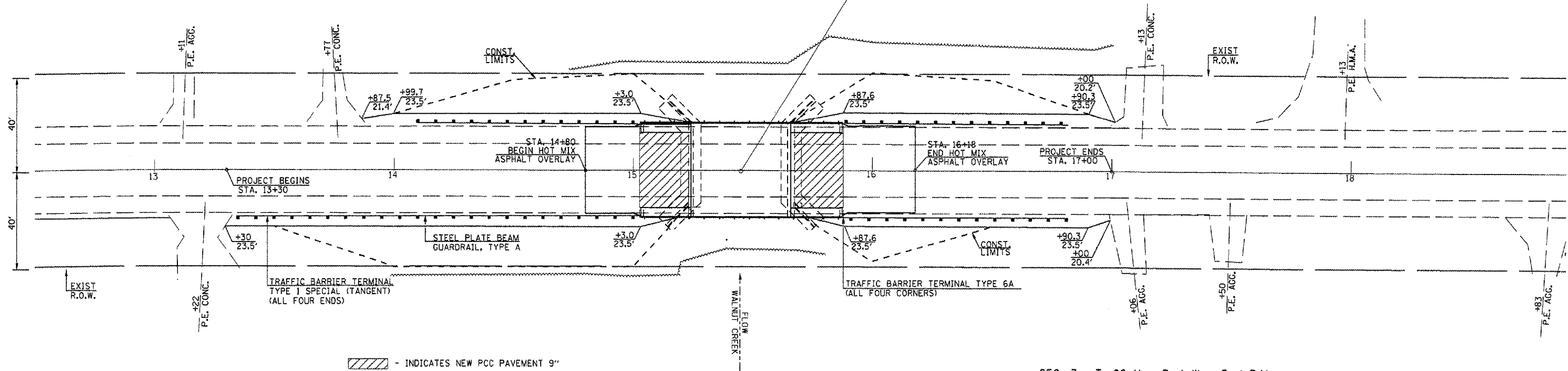


SEC. 12, T. 26 N., R. 2 W., 3rd P.M.

F.A.P. RTE.	SECTION	COUNTY	TOTAL SHEETS	SHEET NO.
702	(113B)	WOODFORD	38	6
STA. 13+30 TO STA. 17+00				
FED. ROAD DIST. NO. 4 ILLINOIS FED. AID PROJECT				

STA. 15+45 - @ RDWY. AT @ STRUCTURE
 PROPOSED STRUCTURE: PRECAST CONCRETE DECK BEAM SUPERSTRUCTURE ON EXISTING SINGLE SPAN SUBSTRUCTURE. 44'-3 1/2" BK.-BK. ABUTMENTS, 39'-0" CLEAR DECK WIDTH STEEL BRIDGE RAIL, TYPE SM, 0° SKEW

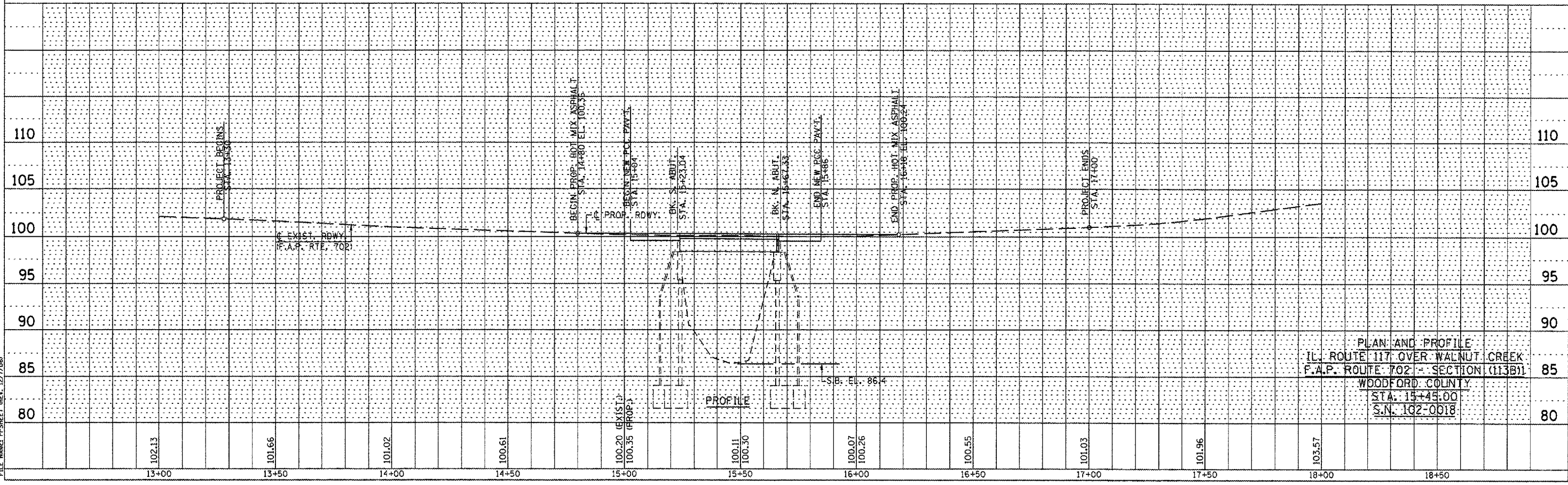


SEC. 7, T. 26 N., R. 1 W., 3rd P.M.

BM#1 CHISELED SQUARE IN S.W. BRIDGE SEAT
 ELEV. 98.05

PLAN	SURVEYED	DATE
	PLOTTED	
	CHECKED	
	BY	
	NO. OF WAYS CHECKED	
	DATE FILED	
	FILE NAME	

PROFILE	SURVEYED	DATE
	PLOTTED	
	CHECKED	
	BY	
	NO. OF WAYS CHECKED	
	DATE FILED	
	FILE NAME	



FILE NAME: PPSHEET REV. 12/7/06