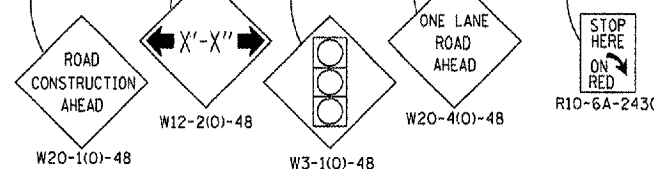
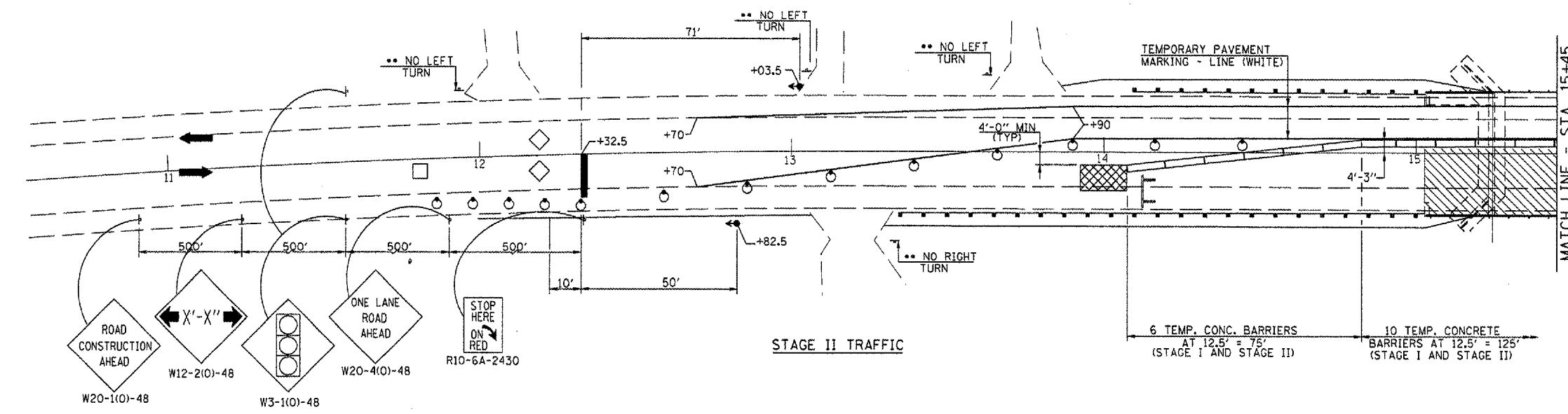
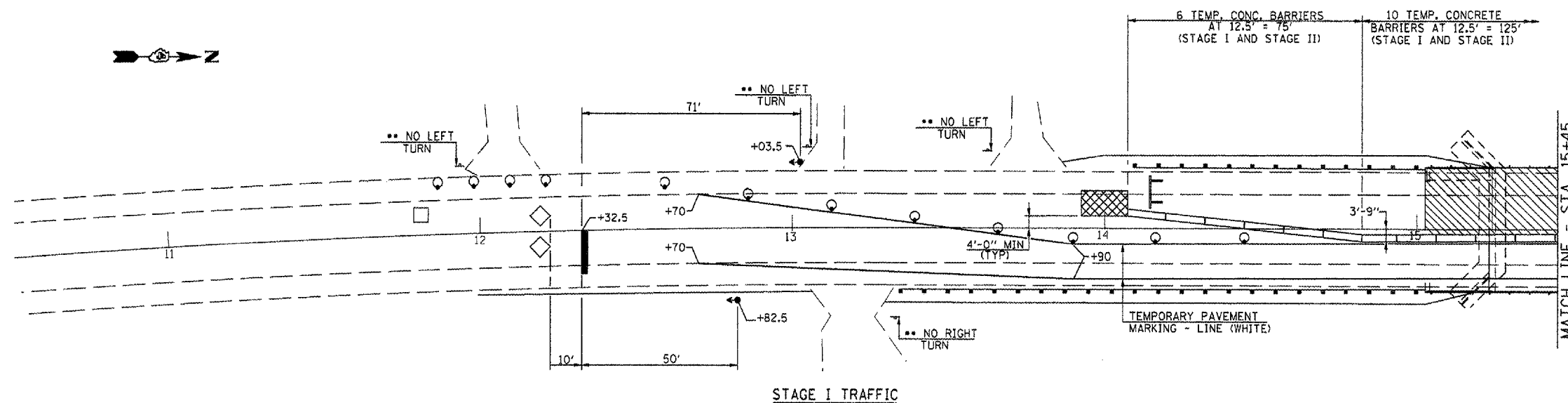


F.A.P. RTE.	SECTION	COUNTY	TOTAL SHEETS	SHEET NO.
702	(113B)I	WOODFORD	38	8
STA. 13+30		TO STA. 17+00		
FED. ROAD DIST. NO. 4 (ILLINOIS) FED. AID PROJECT				



SUGGESTED STAGE CONSTRUCTION SEQUENCE

STAGE I

1. ERECT TRAFFIC CONTROL FOR STAGE I.
2. REMOVE EXISTING DECK LEFT, @ STA. 15+45.
3. CONSTRUCT PROPOSED STAGE I PRECAST PRESTRESSED DECK @ STA. 15+45 AND TEMPORARY RAMP.
4. CONSTRUCT PROPOSED GUARDRAIL & TERMINALS LT, STA. 14+09.70 TO STA. 16+80.30.

STAGE II

1. ERECT TRAFFIC CONTROL FOR STAGE II.
2. REMOVE EXISTING STRUCTURE RIGHT, @ STA. 15+45.
3. CONSTRUCT PROPOSED STAGE II PRECAST PRESTRESSED DECK @ STA. 15+45 AND TEMPORARY RAMP.
4. CONSTRUCT PROPOSED GUARDRAIL & TERMINALS RT, STA. 13+34.70 TO STA. 16+80.30.

FINAL

1. REMOVE ALL STAGE TRAFFIC CONTROL AND RE-ESTABLISH NORMAL TRAFFIC PATTERNS.
2. COMPLETE HOT MIX ASPHALT SURFACE REMOVAL, BINDER AND SURFACE COURSE UNDER TRAFFIC WITH FLAGGERS.
3. FINAL STRIPING, SEEDING AND MISCELLANEOUS CLEANUP.

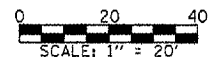
GENERAL NOTES

1. THIS TRAFFIC CONTROL DETAIL SHALL BE USED IN CONJUNCTION WITH STANDARD 701321.
2. EXISTING PAVEMENT MARKINGS THAT CONFLICT WITH THE REVISED STAGE TRAFFIC PATTERNS DURING ALL PHASES OF STAGE CONSTRUCTION SHALL BE REMOVED AS SPECIFIC IN SECTION 783 OF THE STANDARD SPECIFICATIONS AND PAID FOR AS "PAVEMENT MARKING REMOVAL".
3. THE CONTRACTOR SHALL MAINTAIN ACCESS TO ALL PRIVATE AND COMMERCIAL PROPERTIES DURING ALL PHASES OF CONSTRUCTION.
4. EACH DETECTOR LOOP SHALL BE CONNECTED TO A SEPERATE DETECTOR AMPLIFIER.
5. SIGNING FOR STAGE II SAME AS STAGE I.

••THE CONTRACTOR SHALL FURNISH THE POSTS AND ERECT THE SIGNS AT THE LOCATIONS, AS DIRECTED BY THE RESIDENT ENGR./TECH. ALL SIGNS SHALL BE POST MOUNTED.
 THE ABOVE NOTED WORK, INCLUDING SIGNS, POSTS, HARDWARE, ALL TYPE III BARRICADES AND LABOR SHALL BE INCLUDED IN THE CONTRACT UNIT PRICE, EACH, FOR TRAFFIC CONTROL & PROTECTION STD. 701321 (SPECIAL) AND NO OTHER COMPENSATION WILL BE ALLOWED.

SYMBOLS

- ▨ WORK AREA
- ⊥ SIGN
- ⌋ TYPE III BARRICADE
- ⊙ DRUM WITH STEADY BURNING LIGHT
- ◄◄ TRAFFIC SIGNAL
- ▤ TEMPORARY RUMBLE STRIP
- ◇ INDUCTION LOOP DETECTOR
- ▧ DOUBLE VERTICAL PANEL
- ◇ TYPE C BIDIRECTIONAL REFLECTOR
- ▬ TEMPORARY CONCRETE BARRIER
- ▩ IMPACT ATTENUATOR
- STEADY BURNING LIGHTS AND DOUBLE VERTICAL PANELS



NOTE: WORK THIS SHEET WITH SHEETS 7 & 9 OF 38.

STAGE CONSTRUCTION TRAFFIC DETAILS
 IL ROUTE 117 OVER WALNUT CREEK
 F.A.P. RTE. 702 - SECTION (113B)I
 WOODFORD COUNTY
 STA.15+45.00
 S.N. 102-0018

FILE NAME: STAGESHEET (REV. 12/7/06)