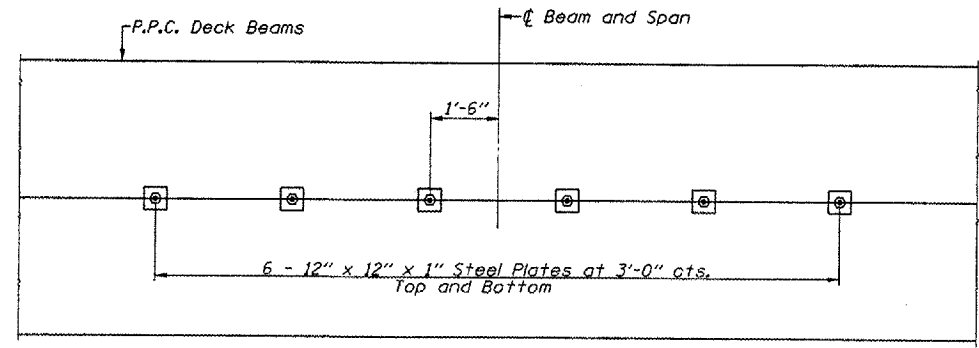
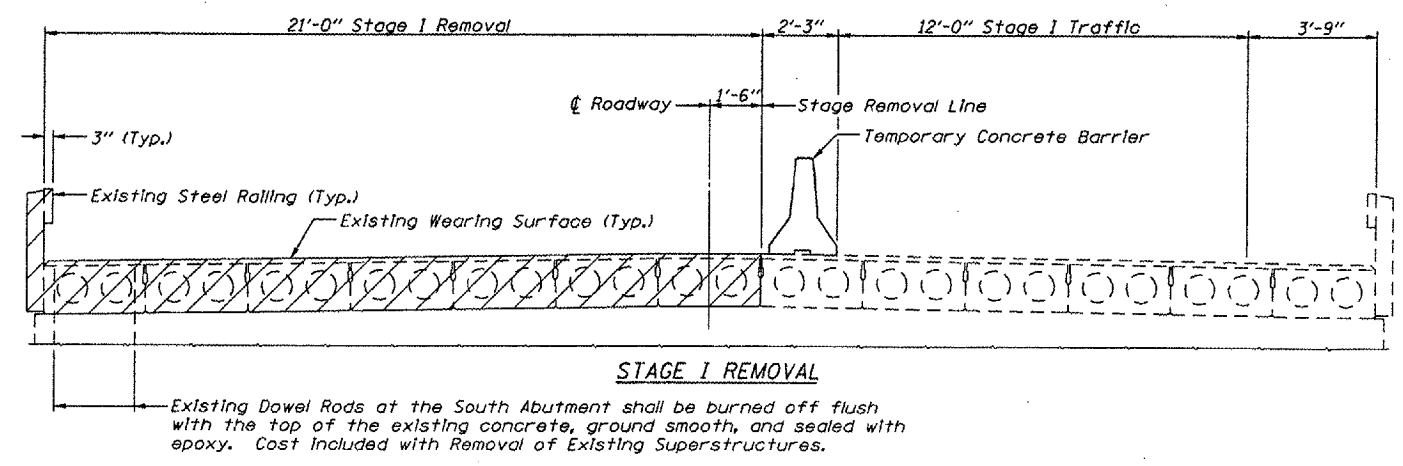
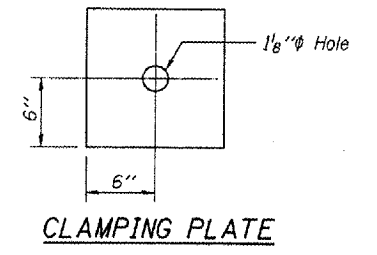
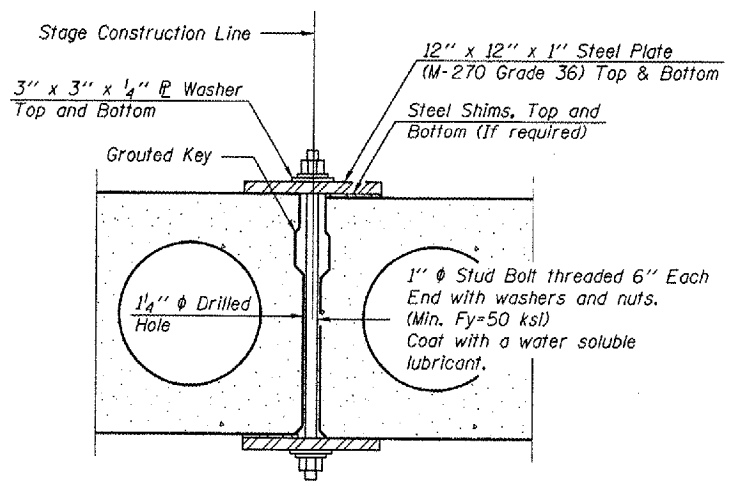
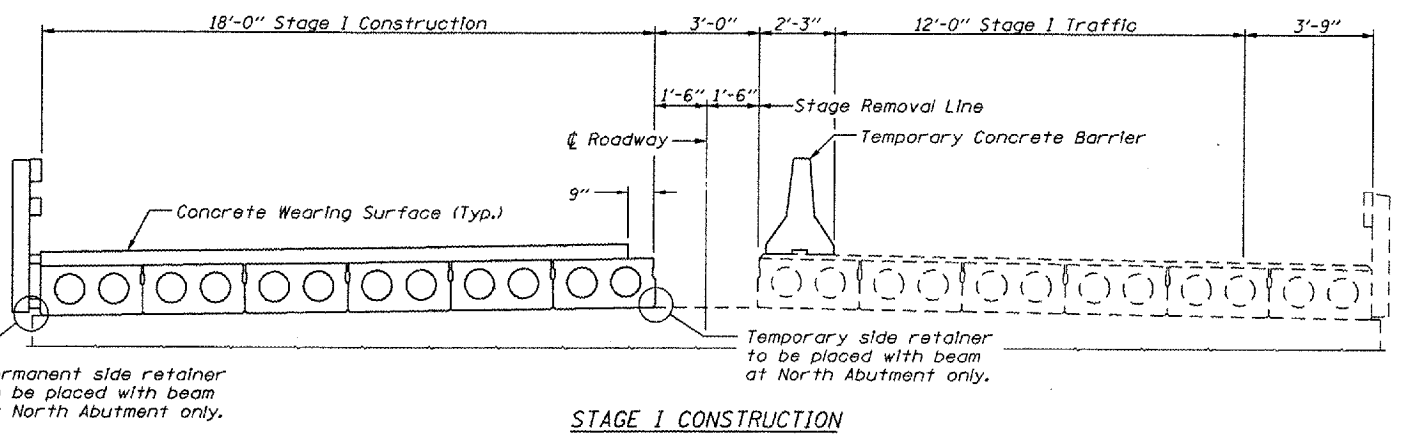


ROUTE NO.	SECTION	COUNTY	TOTAL SHEETS	SHEET NO.
F.A.P. 702	(113B)1	WOODFORD	38	11
FED. ROAD DIST. NO.		ILLINOIS	FED. AID PROJECT	
Contract No. 68635				

SHEET NO. 2
OF 14 SHEETS



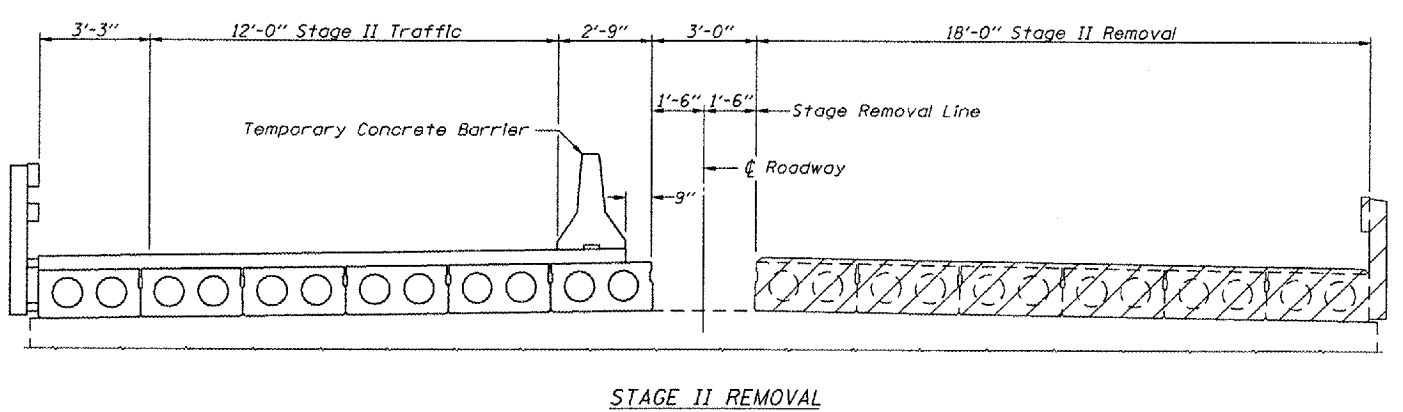
PLAN AT STAGE CONSTRUCTION LINE



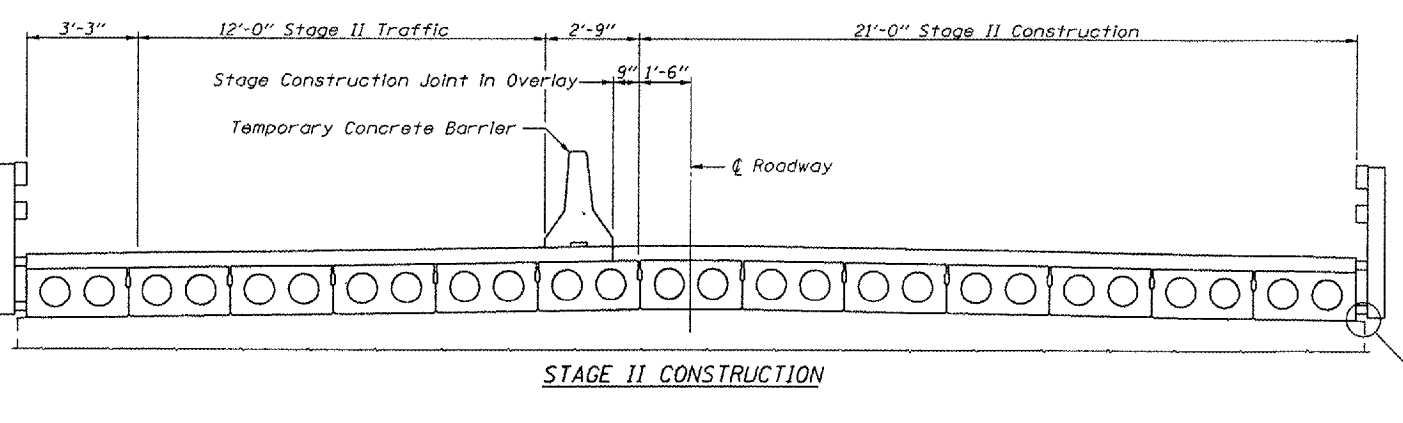
SECTION

SHEAR KEY CLAMPING DETAILS AT STAGE CONST. JT.

See Article 504.06 (d) of the Standard Specifications for Stage Construction of Precast Prestressed Concrete Deck Beams.
Cost included with "Precast Prestressed Concrete Deck Beams".
See Stage Construction Details for traffic lanes.



STAGE II REMOVAL



STAGE II CONSTRUCTION

Notes: All Cross sections are looking North.
Hatched area indicates "Removal of Existing Superstructures."
Cost of removal of the existing wearing surface, existing precast concrete bridge slab and steel railing (including the railing on the approach) are included with "Removal of Existing Superstructures".
For quantity of Temporary Concrete Barrier see Roadway Plans.
For Permanent & Temporary Side Retainer details see Sheet 13 of 14.

STAGE CONSTRUCTION DETAILS
IL ROUTE 117 OVER
WALNUT CREEK
F.A.P. RTE. 702 - SECTION (113B)1
WOODFORD COUNTY
STA. 15+45.00
S.N. 102-0018

FILE NAME: STRUCTURE PLANS (REV. 12/1/06)