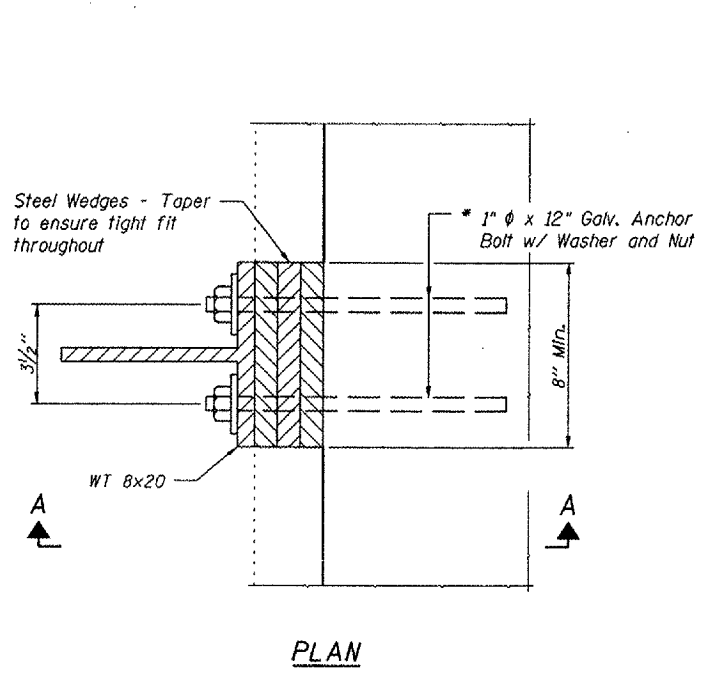


ROUTE NO.	SECTION	COUNTY	TOTAL SHEETS	SHEET NO.
F.A.P. 702	(113B)	WOODFORD	38	22
FED. ROAD DIST. NO.	ILLINOIS	FED. AID PROJECT		

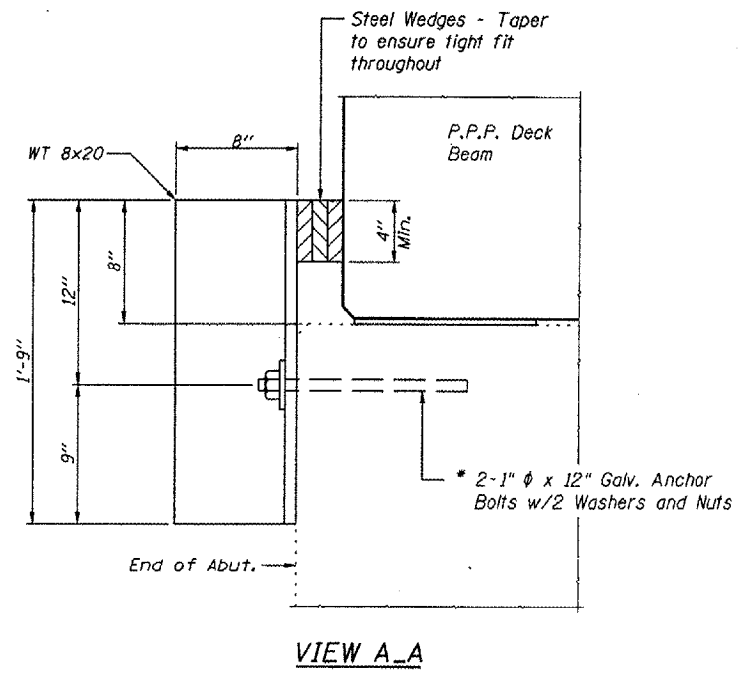
SHEET NO. 13
OF 14 SHEETS

Contract No. 68635



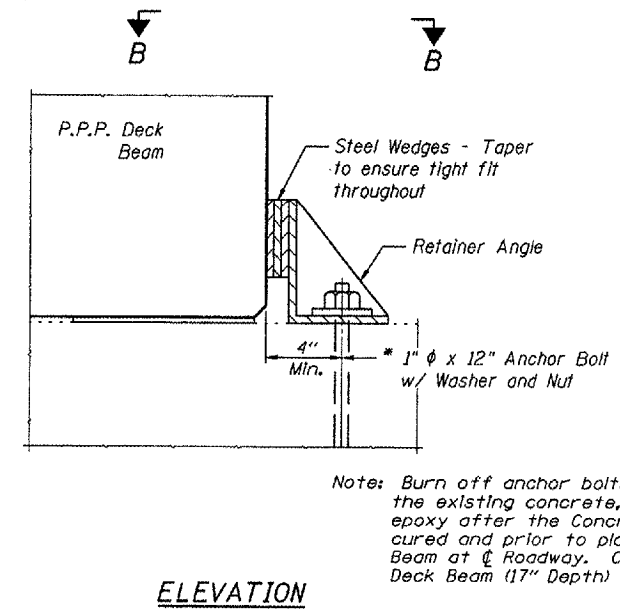
PLAN

PERMANENT SIDE RETAINER AT NORTH ABUTMENT



VIEW A-A

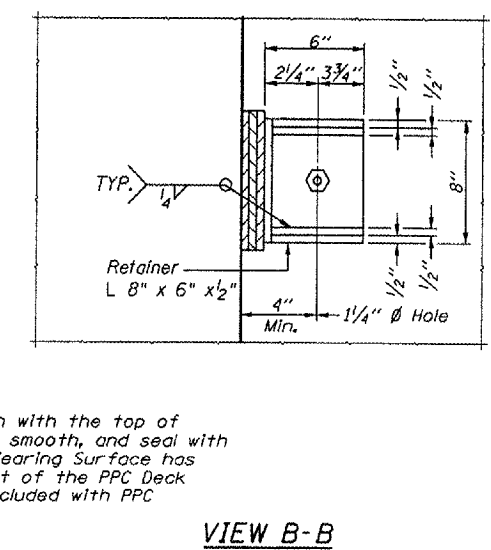
* Epoxy grout 1" anchor bolts in 9" (min.) drilled holes according to Section 584 of the Standard Specification. Cost of retainer and accessories are included with PPC Deck Beams (17" Depth)



ELEVATION

TEMPORARY SIDE RETAINER AT NORTH ABUTMENT

Note: Burn off anchor bolts flush with the top of the existing concrete, grind smooth, and seal with epoxy after the Concrete Wearing Surface has cured and prior to placement of the PPC Deck Beam at Roadway. Cost Included with PPC Deck Beam (17" Depth)



VIEW B-B

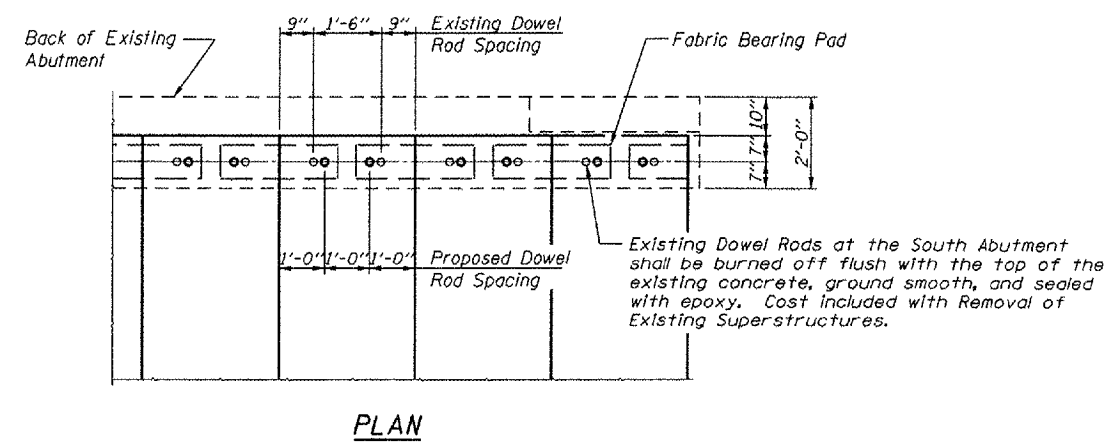
ANCHOR BOLTS FOR RETAINERS
GENERAL NOTES

Holes in the masonry for anchor bolts shall be drilled through the base plates to the diameter and depth shown or according to the manufacturer's recommendation after beams or girders have been erected and adjusted. Prior to setting the bolts, the holes shall be dry and all dust and loose particles shall be removed by the use of compressed air or vacuuming. The anchor bolts, furnished and installed and including the epoxy grout or capsules shall not be paid for separately but shall be included in the unit bid price for PPC Deck Beams (17" Depth). The Contractor may use, at his option, the capsule or the adhesive cartridge type anchor rods that have been previously tested and given a prior approval by the Department. The Contractor shall install these anchor rods in pre-drilled holes according to the manufacturer's recommendations and procedures. The capsule or the adhesive cartridge type anchor rods shall be a two part system composed of:

1. A threaded rod stud with nut and washer of the type specified.
2. A sealed glass capsule or a sealed glass adhesive cartridge containing premeasured amounts of the adhesive chemical.

Location	Type
N. Abut.	A325

ASTM F 1554 Grade 105, ASTM A 449 and AASHTO M 314 Grade 105 anchor bolts may be substituted for the anchor bolts shown above.



PLAN

DOWEL ROD SPACING (SOUTH ABUTMENT)

Existing Dowel Rods at the South Abutment shall be burned off flush with the top of the existing concrete, ground smooth, and sealed with epoxy. Cost included with Removal of Existing Superstructures.

SUBSTRUCTURE DETAILS
IL ROUTE 117 OVER
WALNUT CREEK
F.A.P. RTE. 702 - SECTION (113B)
WOODFORD COUNTY
STA. 15+45.00
S.N. 102-0018

FILE NAME: STRUCTURE PLANS/REV. 12/16/06J