

STATE OF ILLINOIS
DEPARTMENT OF TRANSPORTATION
DIVISION OF HIGHWAYS

PLANS FOR PROPOSED FEDERAL AID HIGHWAY

F.A.P. RTE.	SECTION	COUNTY	TOTAL SHEETS	SHEET NO.
693	129 B-2	MCLEAN	34	1
CONTRACT NO. 70519			+1 35	
D-95-039-06				

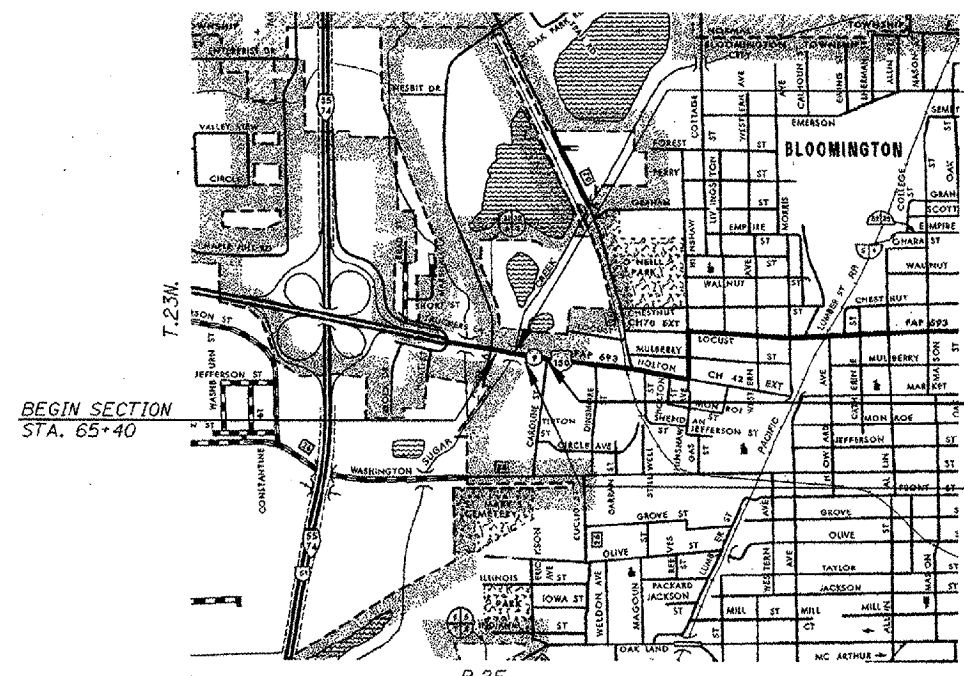
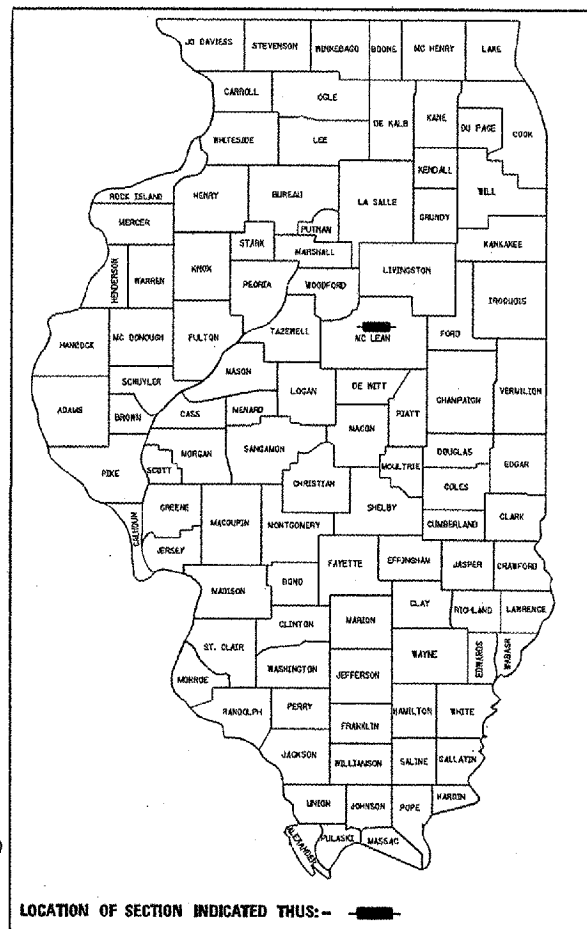
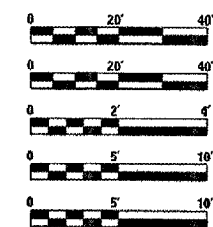
INDEX OF SHEETS

SEE SHEET NO. 2 FOR INDEX OF SHEETS
SEE SHEET NO. 2 FOR LIST OF ILLINOIS D.O.T. HIGHWAY STANDARDS

**FAP ROUTE 693 (IL 9)
SECTION 129 B-2
PROJECT ACBHF-0693 (059)
MCLEAN COUNTY
C-95-040-06**

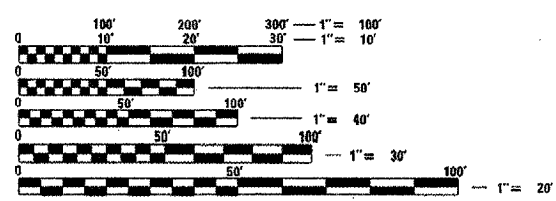
**BRIDGE SUPERSTRUCTURE REPLACEMENT
OVER SUGAR CREEK IN BLOOMINGTON**

PLAN
PROFILE HORIZONTAL
PROFILE VERTICAL
CROSS SECTION HORIZ.
CROSS SECTION VERT.



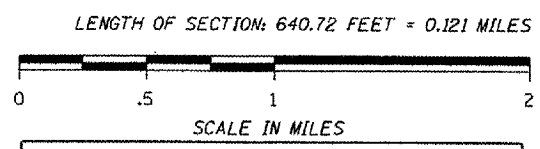
SECTION 129 B-2 INCLUDES
REHABILITATION OF SN 057-0190
3-SPAN P.P.C. DECK BEAM BRIDGE
(89'-4 1/2" BK. TO BK., 75'-0" O. TO O. DECK)
CARRYING FAP 693 (IL 9) OVER
SUGAR CREEK

STA. EQUATION
STA. 68+61.44 BK=
STA. 68+60.72 AH



FULL SIZE PLANS HAVE BEEN PREPARED USING STANDARD
ENGINEERING SCALES. REDUCED SIZED PLANS WILL NOT
CONFORM TO STANDARD SCALES. IN MAKING MEASUREMENTS
ON REDUCED PLANS, THE ABOVE SCALES MAY BE USED.

CURRENT ADT = 16,900 (2006)



CUMMINS ENGINEERING CORPORATION
SPRINGFIELD, ILLINOIS



Michael D. Cummins 12/19/2006
ILLINOIS PROFESSIONAL NO. 43244
(Expires 11/30/07)

STATE OF ILLINOIS
DEPARTMENT OF TRANSPORTATION
DIVISION OF HIGHWAYS

SUBMITTED 12/20/06
Joseph E. Crowe
DEPUTY DIRECTOR OF HIGHWAYS, REGION 3 ENGINEER

February 20, 07
Eric E. Abrahams
ENGINEER OF DESIGN AND ENVIRONMENT

February 20, 07
Melvin R. Sees
DIRECTOR OF HIGHWAYS, CHIEF ENGINEER

**PRINTED BY THE AUTHORITY
OF THE STATE OF ILLINOIS**

PROJECT ENGINEER: KENSIL GARNETT (217) 465-4181
CONSULTANT LIAISON: NANCY FASIG (217) 465-4181

CONTRACT NO. 70519

J.U.L.I.E.
JOINT UTILITY LOCATION INFORMATION FOR EXCAVATION
1-800-892-0123

DESIGN DESIGNATION
N.A.