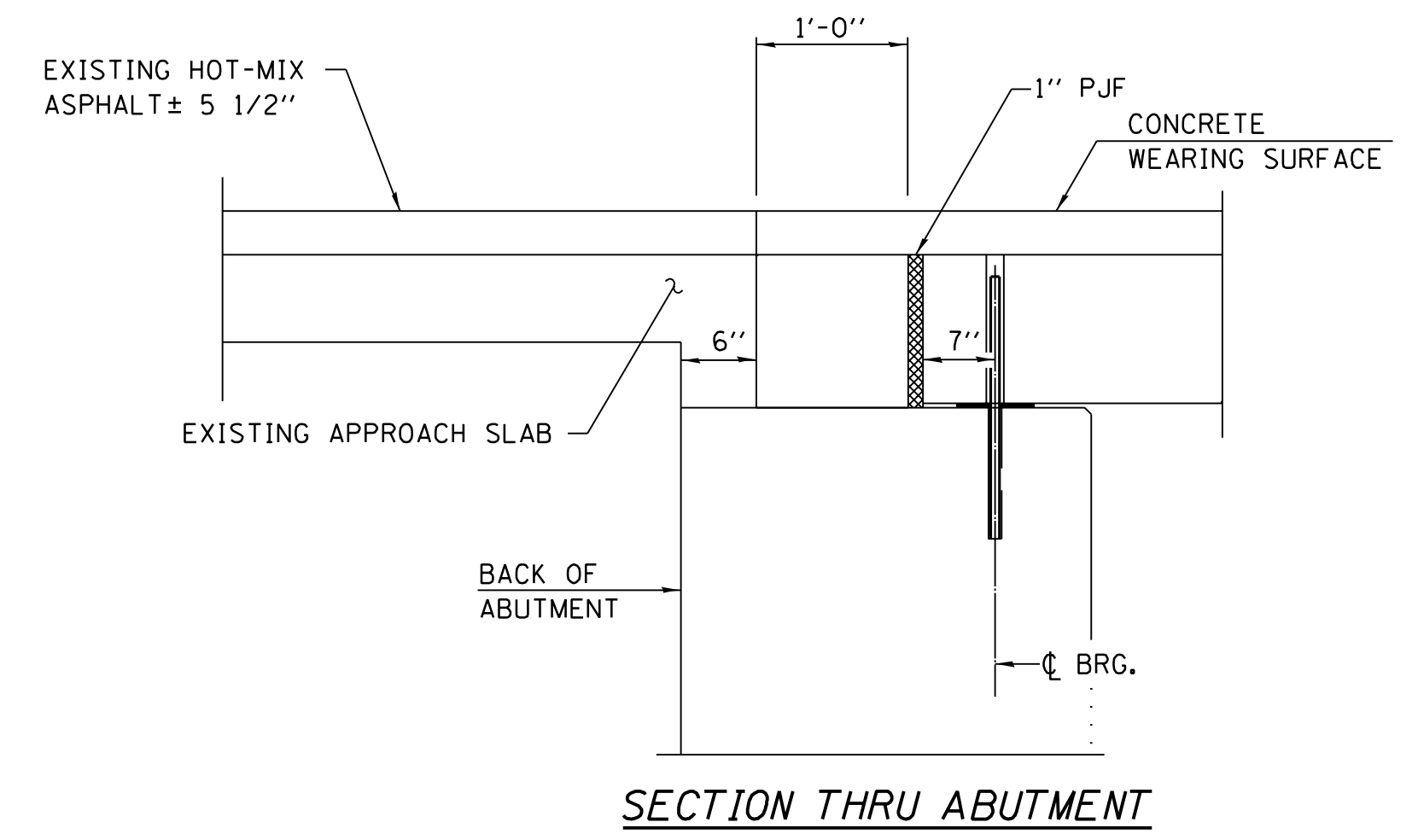
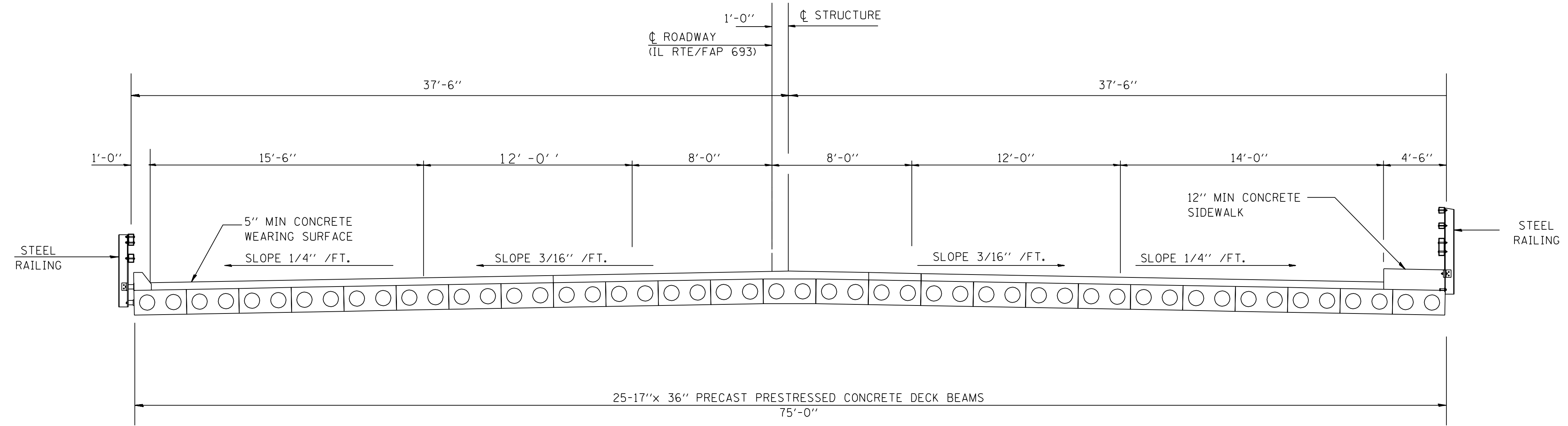


F.A.P. RTE. 693	SECTION 129 B-2	COUNTY MCLEAN	TOTAL SHEETS 34	SHEET NO. 6
STA. 67+49.95		TO STA. 68+38.33		
FED. ROAD DIST. NO.		ILLINOIS FED. AID PROJECT		
<b>CONTRACT NO. 70519</b>				

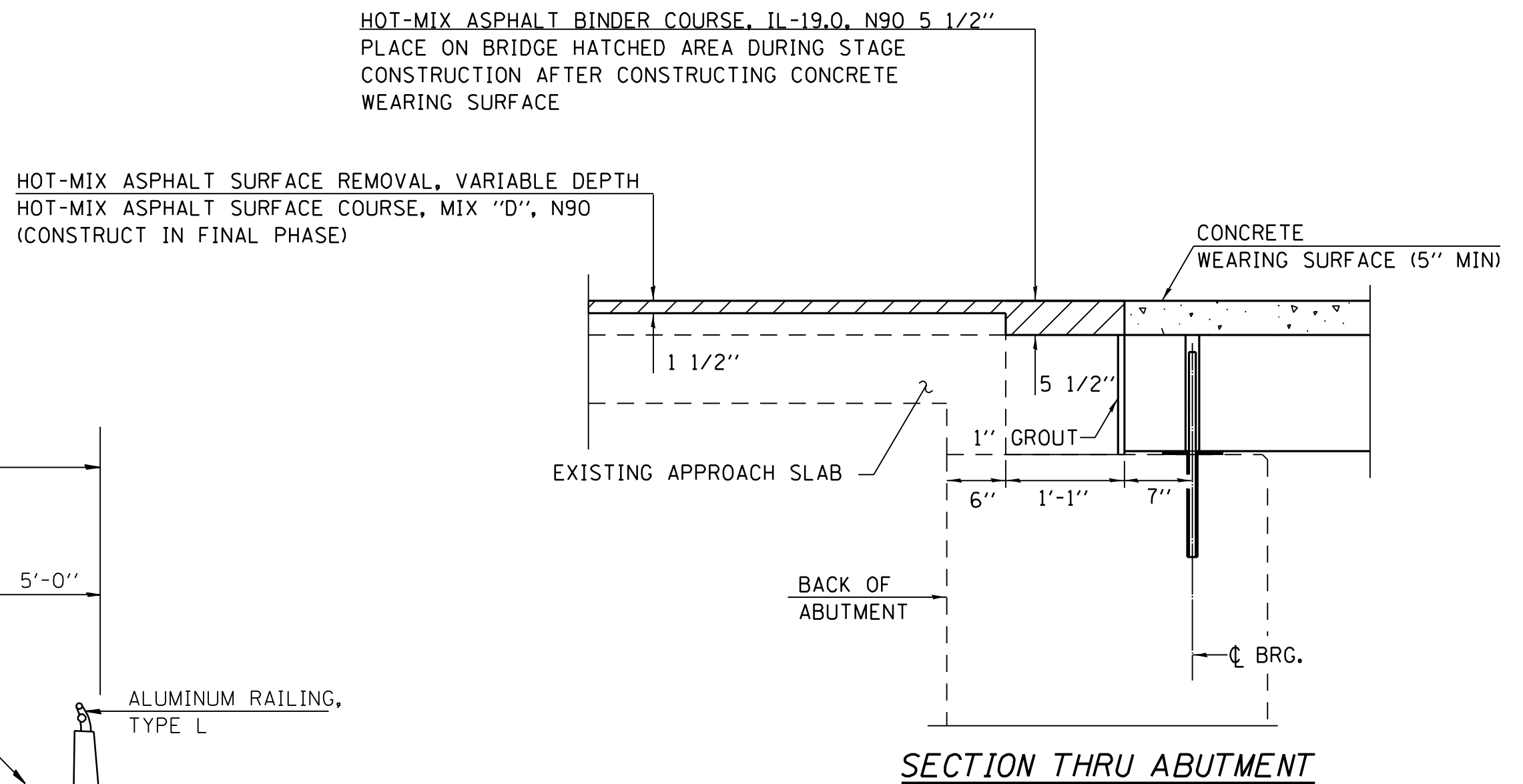
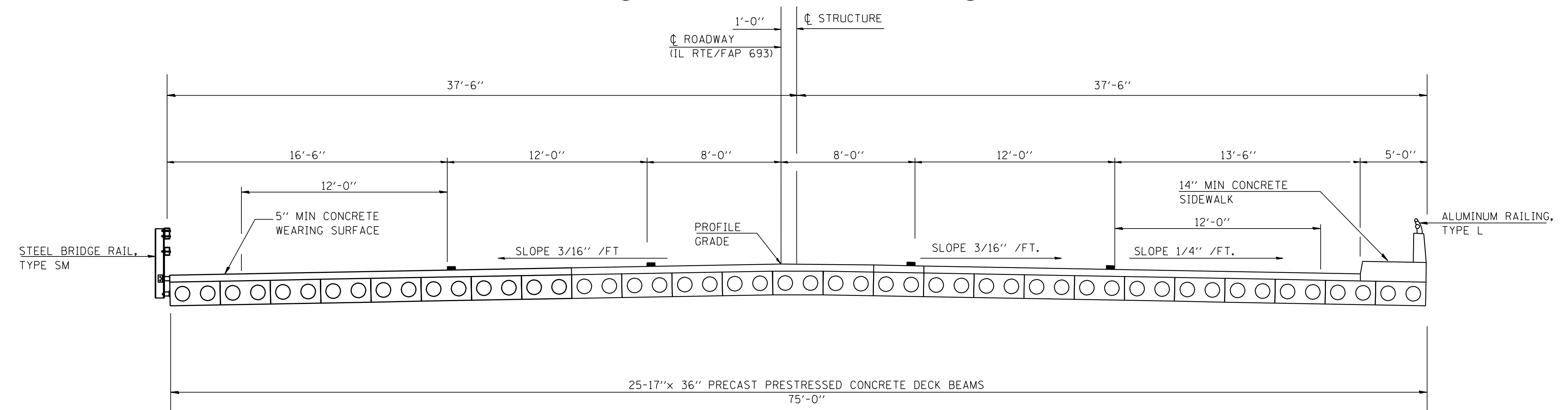
### ③ EXISTING TYPICAL CROSS SECTION

SN 057-0190  
 ② STATION 67+49.95 TO STATION 68+38.33 ②



### ③ PROPOSED TYPICAL CROSS SECTION

SN 057-0190  
 ② STATION 67+49.95 TO STATION 68+38.33 ②



**TYPICAL CROSS SECTIONS**

FAP ROUTE 693 (IL 9)  
 SECTION 129 B-2  
 MCLEAN COUNTY

CUMMINS ENGINEERING CORPORATION	JOB #: 2114.5
	FILE: 2114TYP
	DATE: 11/28/06