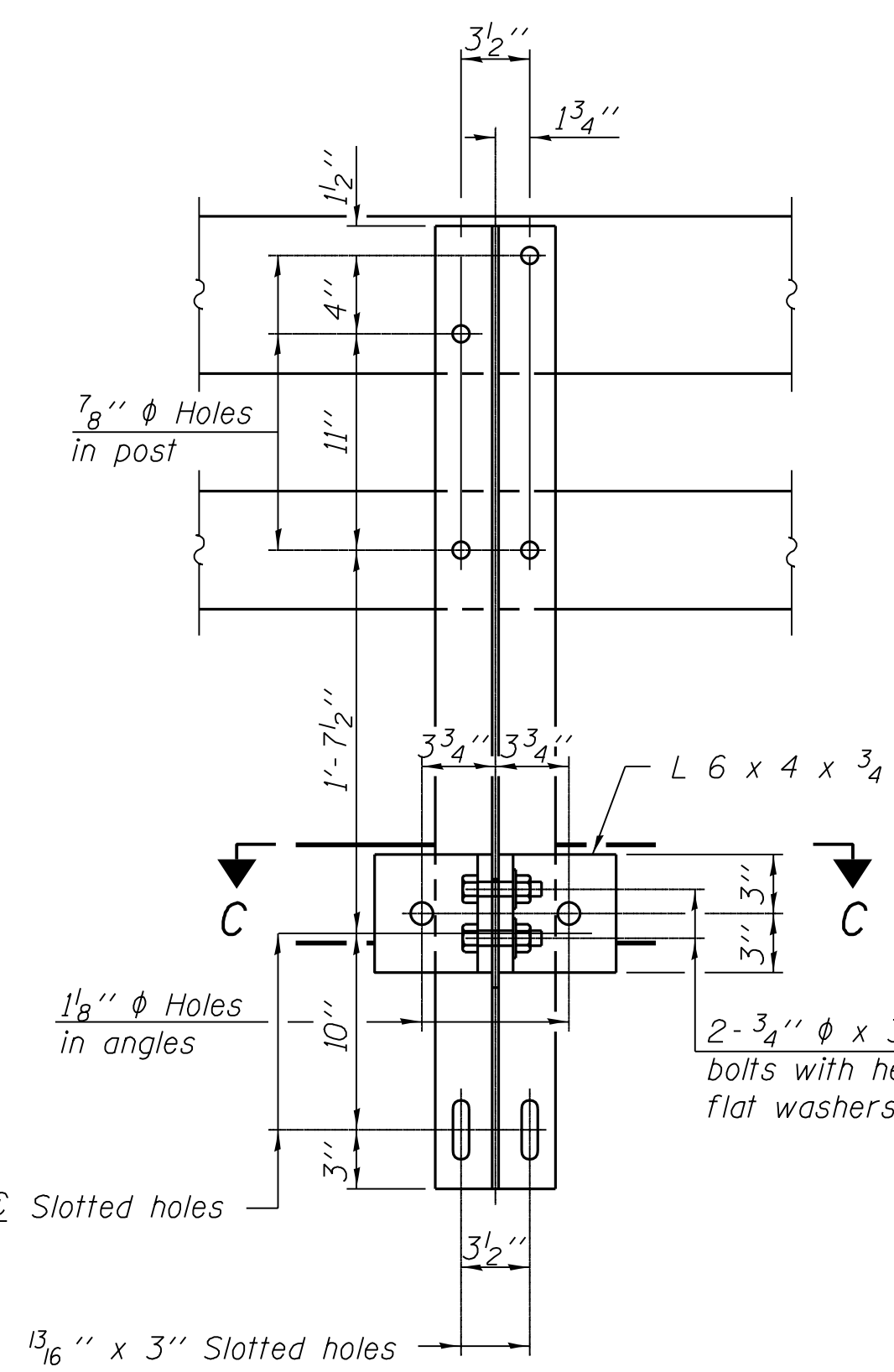
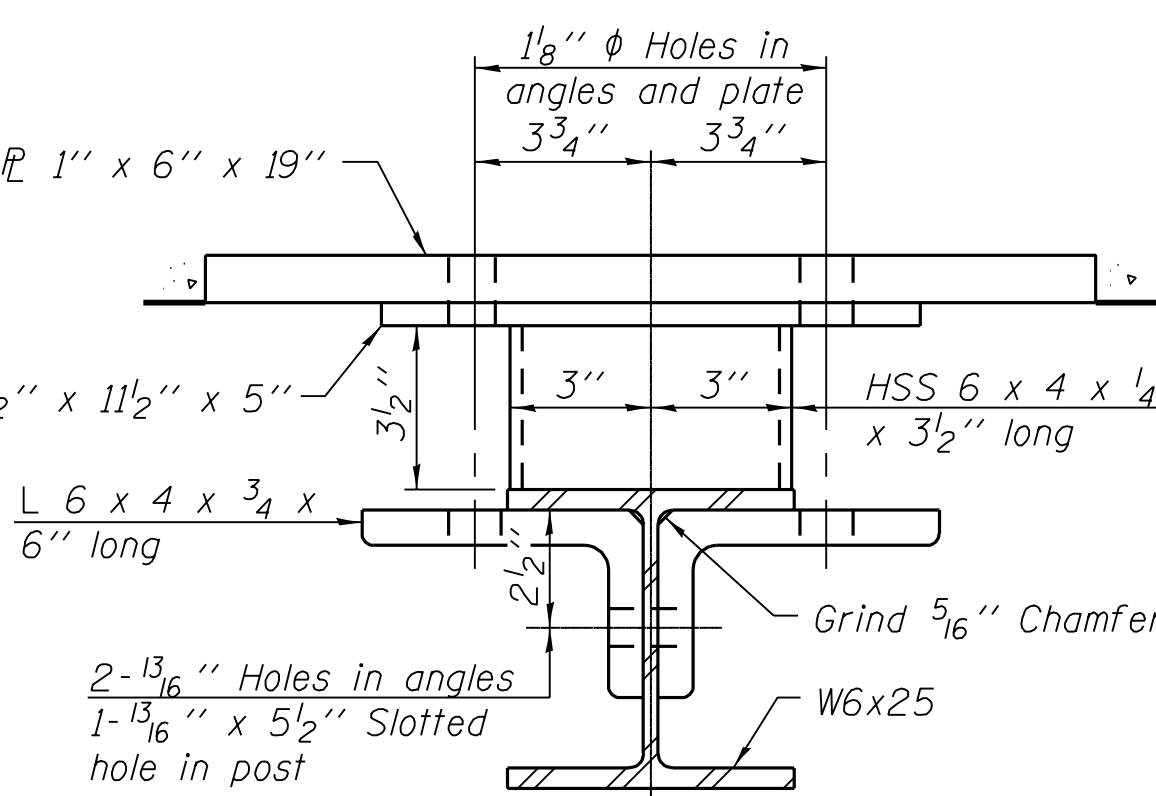


4- 3/4"  $\phi$  x 6" Round Head Bolts (With slot or approved recess in head) with locknut & flat washer. 7/8"  $\phi$  holes in hollow structural section may be drilled in the field.

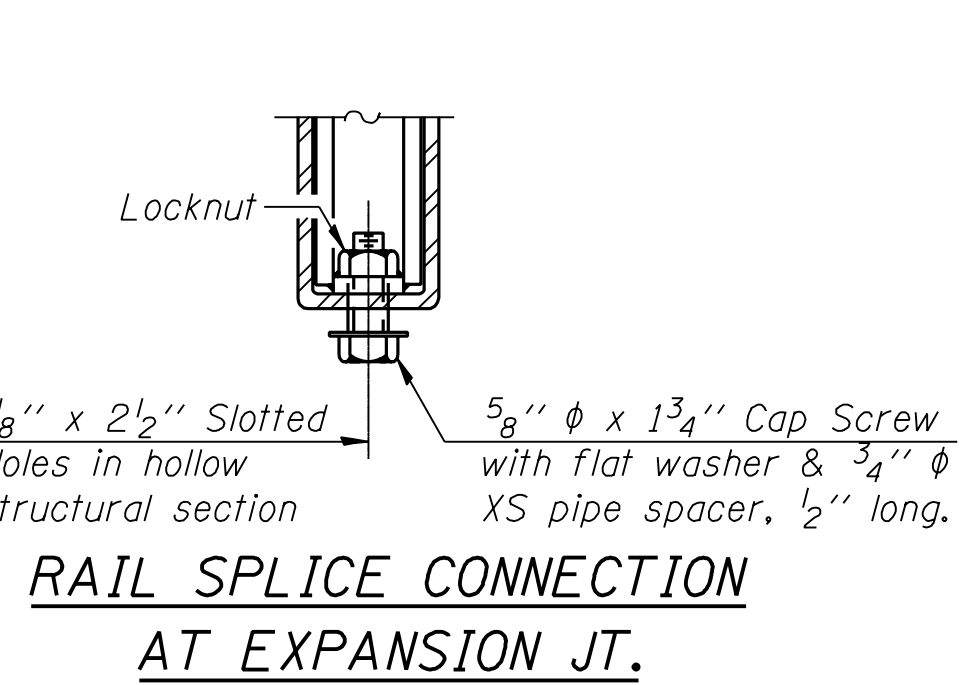
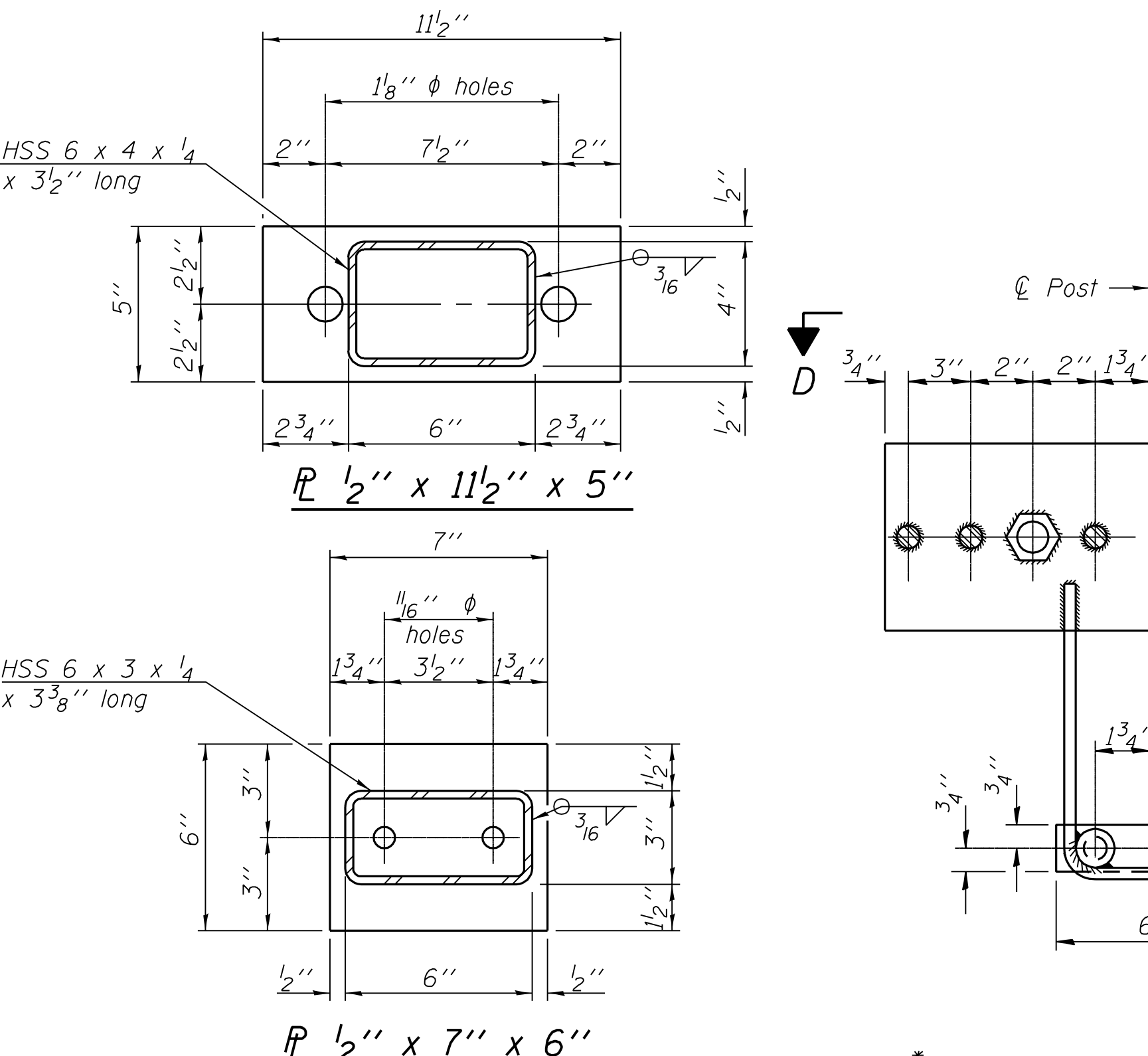


SECTION B-B

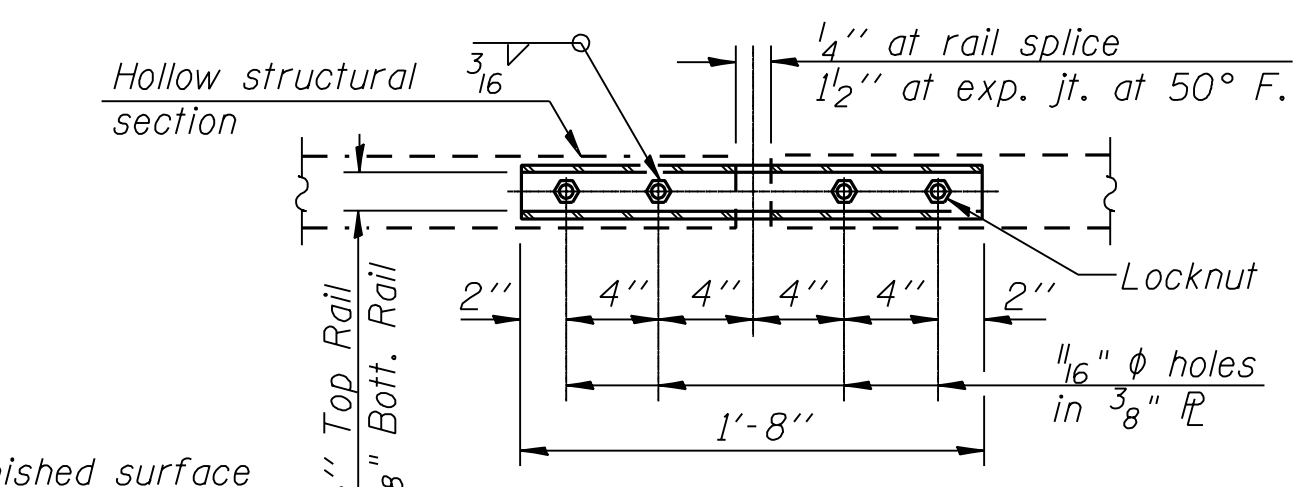


SECTION C-C

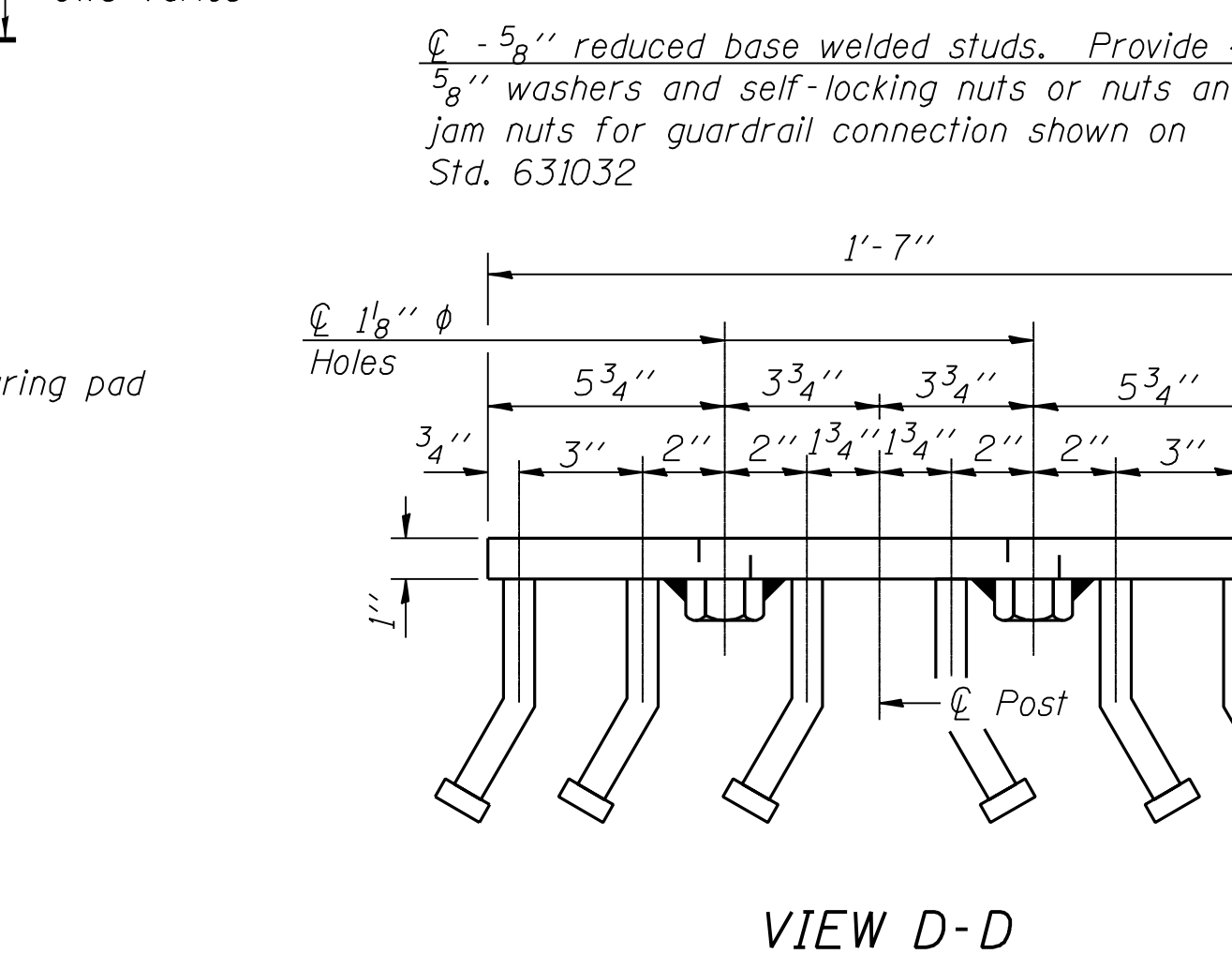
SECTION AT RAIL POST



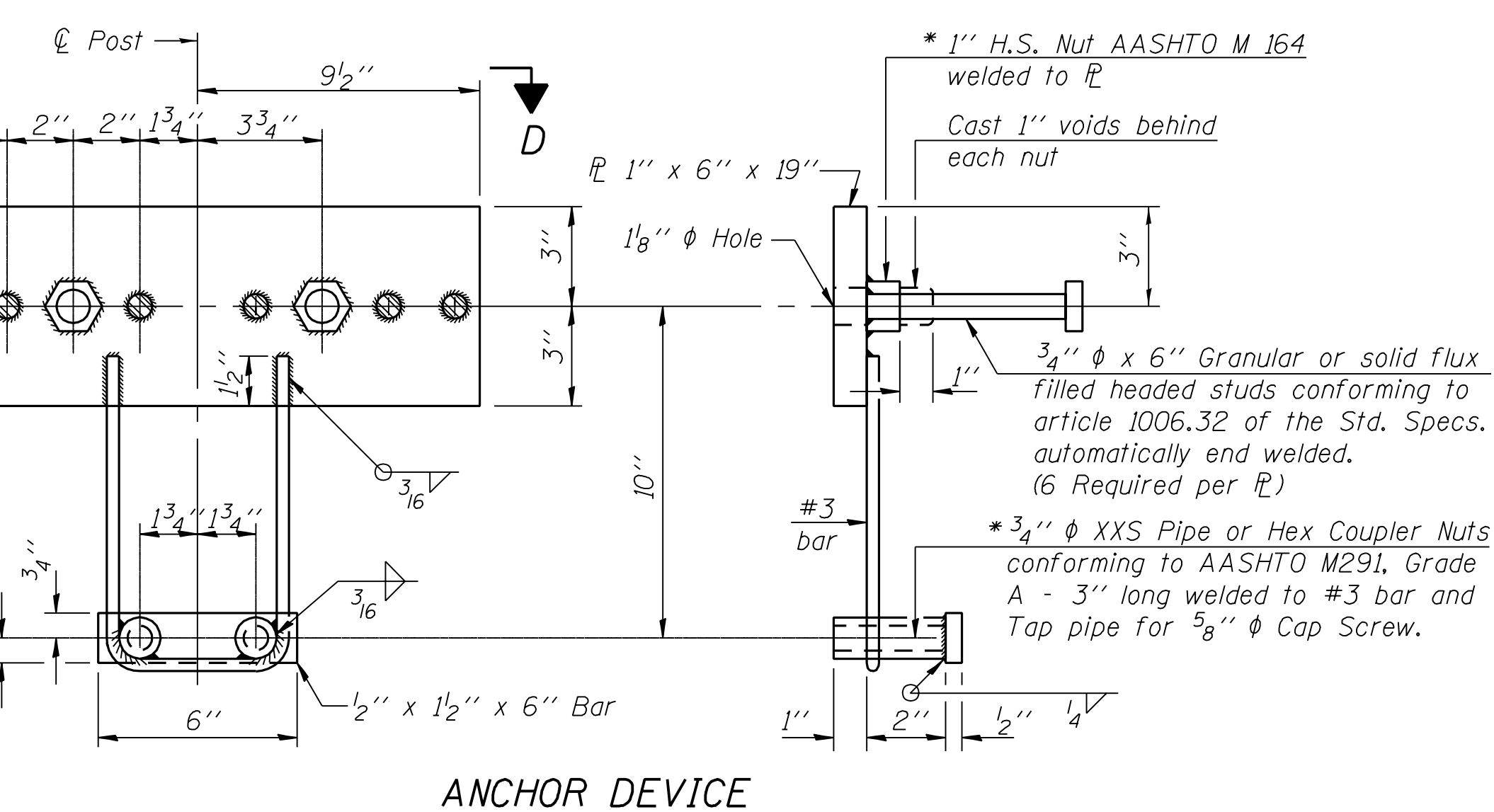
RAIL SPLICE CONNECTION AT EXPANSION JT.



PLAN-BOTT. SPLICE R TYPICAL



VIEW D-D

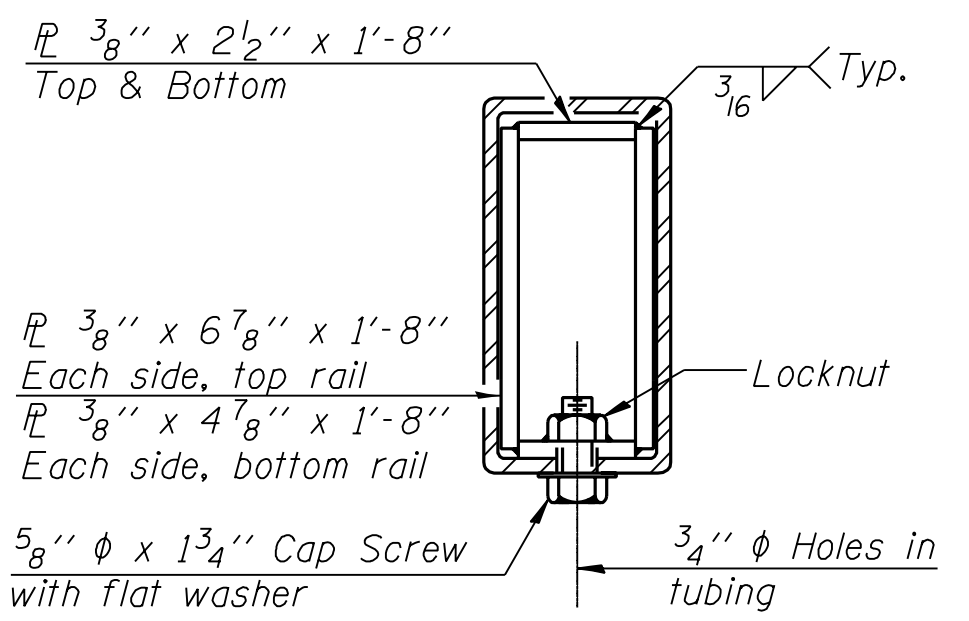


ANCHOR DEVICE

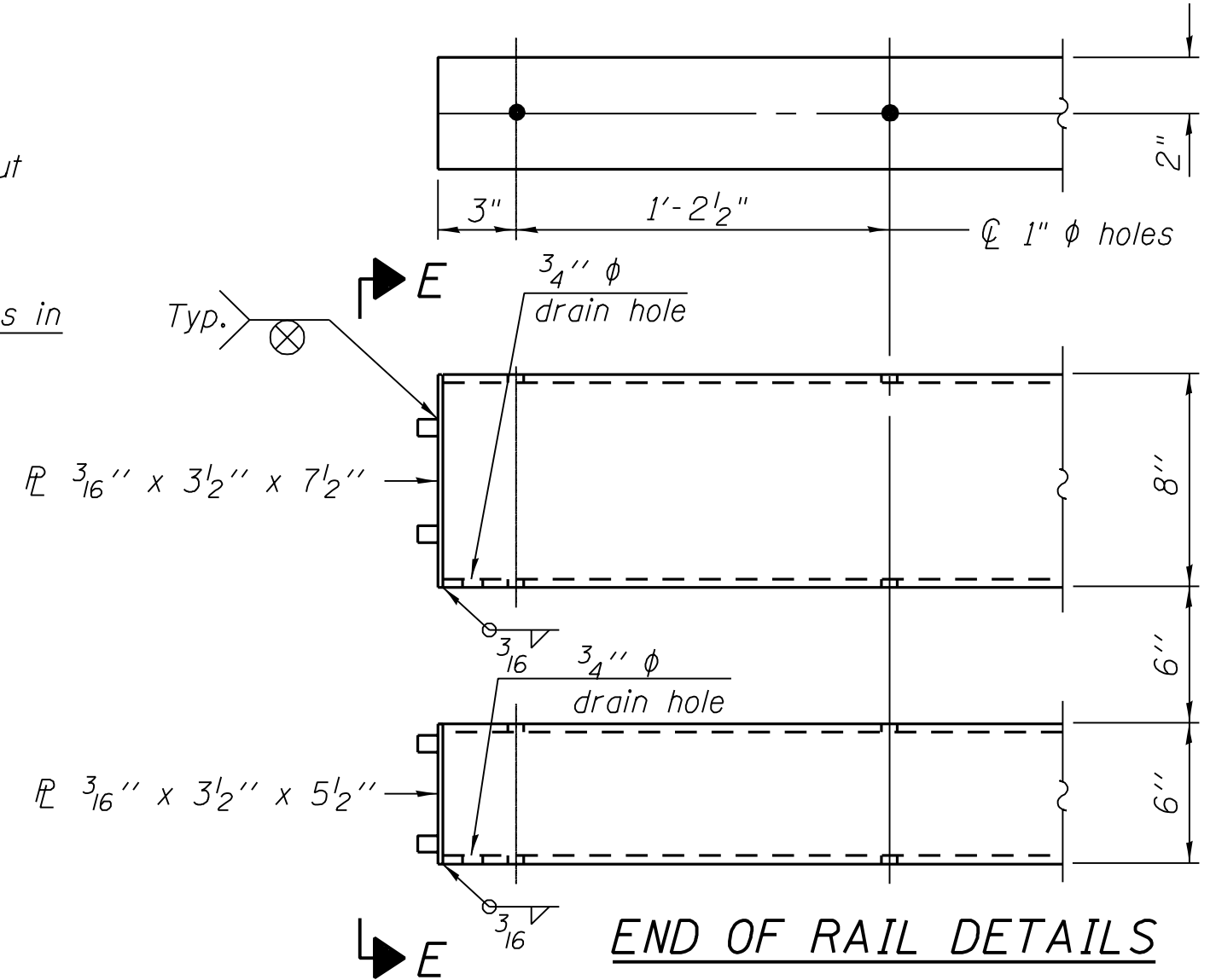
DESIGNED	T.S.H.
CHECKED	M.D.C.
DRAWN	A.A.N.
CHECKED	M.D.C.

R-34CWS 11-1-06 (6'-3" Maximum Post Spacing) (5" minimum to 7 1/8" maximum CWS thickness)

\* Threaded areas shall be plugged or blocked off during casting of beam. Galvanized after fabrication.



SECTION AT RAIL SPLICE



END OF RAIL DETAILS

Notes:  
 All field drilled holes shall be coated with an approved zinc rich paint before erection.  
 For multi-span bridges, sufficient 1/4" x 6" x 1'-2" galvanized steel shims shall be provided to align rail between adjacent spans. Cost included with Steel Bridge Rail, Type SM.  
 Steel rail elements shall be galvanized according to Article 509.05 of the Standard Specifications.  
 \*\* The studs of the anchor devices shall be placed below the top reinforcement bars and the outermost longitudinal reinforcement bar shall be placed directly above the studs of the rail post anchor device.

BILL OF MATERIAL

Item	Unit	Quantity
Steel Bridge Rail, Type SM	Foot	87

**STEEL RAILING, TYPE SM WITH CONCRETE WEARING SURFACE**  
 ILLINOIS ROUTE 9 OVER SUGAR CREEK  
 F.A.P. ROUTE 693 - SEC. 129 B-2  
 MCLEAN COUNTY  
 STATION 67+94  
 STRUCTURE NO. 057-0190

CUMMINS ENGINEERING CORPORATION  
 JOB #: 2114.5  
 FILE: 21145railism  
 DATE: 12/18/06