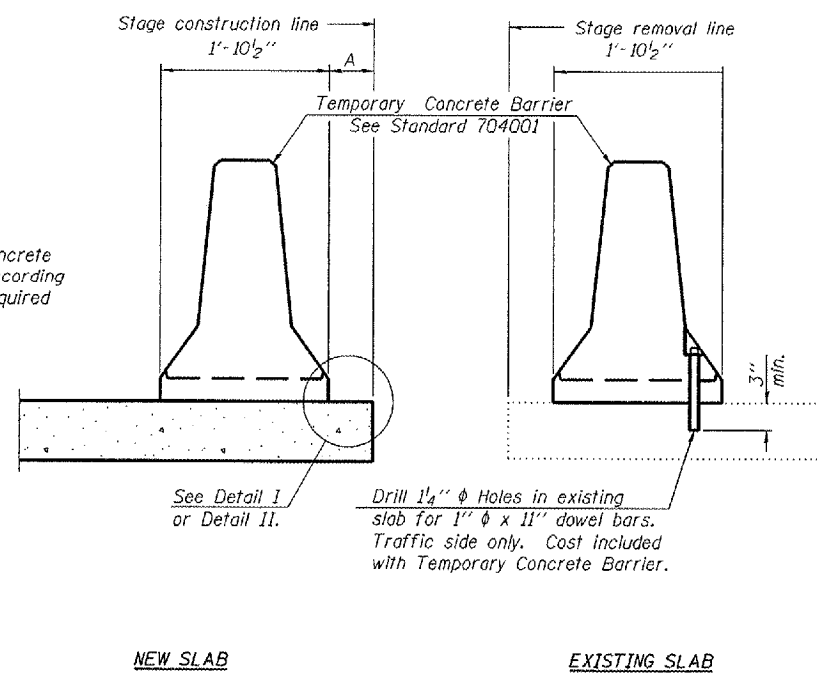


ROUTE NO.	SECTION	COUNTY	SHEETS	"OF"	SHEET NO. 04
FAI 72	*	SANGAMON	559	257	44 SHEETS
FED. ROAD DIST. NO. 7	BUILDING	FED. AID PROJECT			

\*(84-9-4)A,HBK,BY,BY-1 Contract No 72541



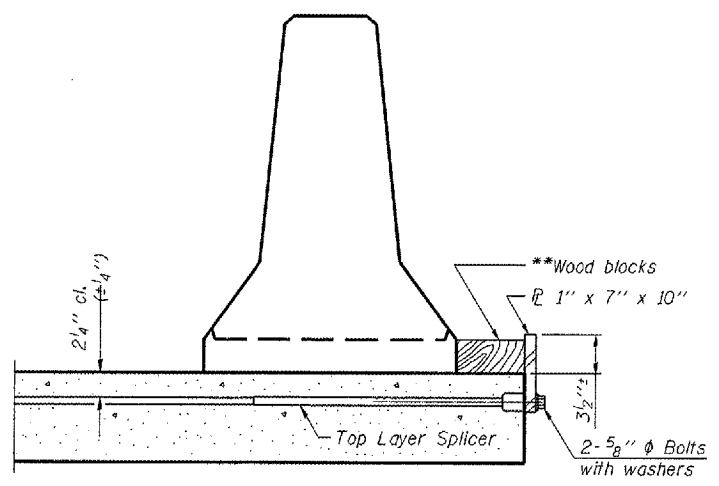
**SECTIONS THRU SLAB**

**NOTES**

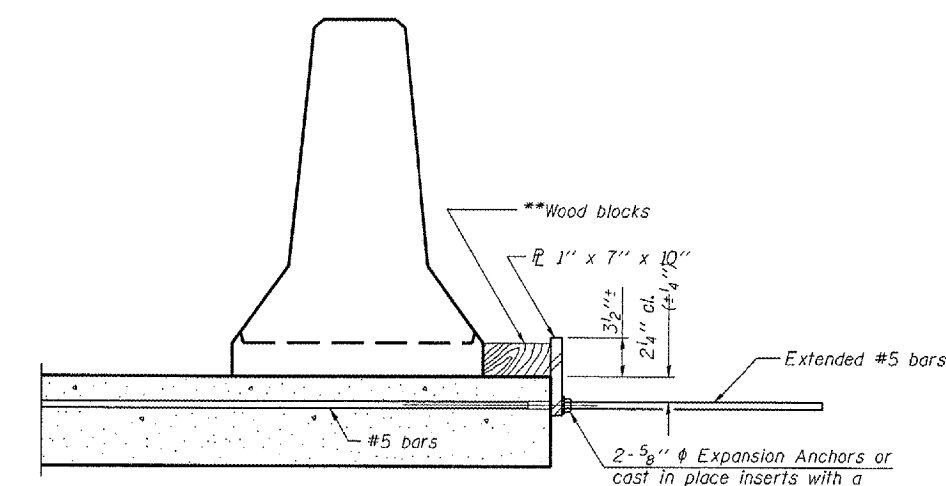
**Detail I - With Bar Splicer or Couplers:**  
 Connect one (1) 1"x7"x10" steel  $\bar{R}$  to the top layer of couplers with 2-5/8"  $\phi$  bolts screwed to coupler at approximate  $\bar{C}$  of each barrier panel.

**Detail II - With Extended Reinforcement Bars:**  
 Connect one (1) 1"x7"x10" steel  $\bar{R}$  to the concrete slab with 2-5/8"  $\phi$  Expansion Anchors or cast in place inserts spaced between the top layer of reinforcement at approximate  $\bar{C}$  of each barrier panel.

Cost of anchorage is included with Temporary Concrete Barrier. The 1" x 7" x 10" plate shall not be removed until stage II construction forms and all reinforcement bars are in place and the concrete is ready to be placed.

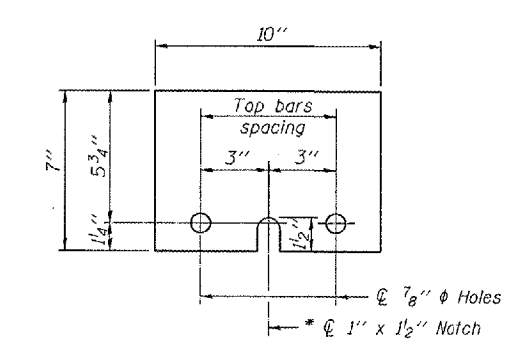


**DETAIL I**



**DETAIL II**

\*\* Wood blocks may be omitted when required to provide minimum stage traffic lane width. When the wood blocks are omitted, the concrete barrier shall be in direct contact with the steel retainer plate.



**STEEL RETAINER  $\bar{R}$  1" x 7" x 10"**  
 \* Required only with Detail II

#FILES \$DATES

LAYOUT	MMK	06/27/03
DRAWN	DAP	07/17/03
REVIEWED	JMM	10/21/03

R-27 11-1-06

Corporate License Number 184-001-084  
**TEMPORARY CONCRETE BARRIER**  
 F.A.I. 72 OVER UNION PACIFIC RAILROAD  
 SECTION (84-9-4)A,HBK,BY,BY-1  
 SANGAMON COUNTY  
 STATION 608+51.98  
 STR NO. 084-0074 EB - 084-0075 WB

© Copyright Hanson Professional Services Inc. \$MS\_YEAR\$

**HANSON**

96S2002B  
 DATE: 01/12/06