

* (84-9-4)A, H.B.K., BY-1 Contract No. 72541

* Elevations given are from existing plans, and have been adjusted by deducting 0.69'. The comparison data is based on a survey of the existing bearing seats, and is subject to normal construction tolerance variations.

BILL OF MATERIAL

Bar	No.	Size	Length	Shape
$h_4(E)$	27	#4	11'-3"	
$h_5(E)$	19	#4	11'-3"	
$h_8(E)$	10	#5	20'-8"	
$h_9(E)$	14	#5	7'-3"	
$h_{10}(E)$	14	#5	7'-6"	
$h_{11}(E)$	4	#6	20'-8"	
$h_{12}(E)$	10	#5	25'-5"	
$h_{14}(E)$	4	#6	25'-5"	
$n(E)$	10	#6	12'-1"	
$n_1(E)$	6	#6	5'-10"	
$n_2(E)$	10	#6	15'-9"	
$n_3(E)$	6	#6	8'-0"	
$p_2(E)$	13	#6	2'-10"	
$p_3(E)$	3	#7	11'-6"	
$p_4(E)$	6	#7	14'-6"	
$p_5(E)$	8	#7	6'-6"	
$p_6(E)$	3	#7	8'-0"	
$s(E)$	9	#4	15'-1"	
$s_1(E)$	2	#4	17'-11"	
$s_2(E)$	23	#4	9'-5"	
$u_2(E)$	4	#6	7'-0"	
$u_3(E)$	4	#6	9'-1"	
$v(E)$	12	#4	6'-0"	
$v_1(E)$	42	#4	3'-7"	
$v_2(E)$	42	#4	3'-2"	
$v_3(E)$	6	#4	3'-5"	
$v_4(E)$	48	#4	3'-1"	
$v_5(E)$	24	#6	7'-2"	
$v_6(E)$	6	#6	7'-2"	
$v_7(E)$	20	#6	7'-6"	
Structure Excavation		Cu. Yd.	91	
Concrete Structures		Cu. Yd.	30.3	
Reinforcement Bars Epoxy Coated		Pound	3570	
Furnishing Steel Piles HPI0x42		Lin. Ft.	100	
Driving Piles		Lin. Ft.	100	
Test Piles Steel HPI0x42		Each	1	
Concrete Encasement		Cu. Yd.	1.1	

Reinforcement Bars designated (E) shall be Epoxy Coated. For details of Bar Splicers, see sheet 40 of 44.
 Bars epoxy grouted shall have an embedment sufficient to obtain 1.25 x the yield strength of the reinforcing bar.
 Drill holes for epoxy grouted bars to miss existing reinforcement.

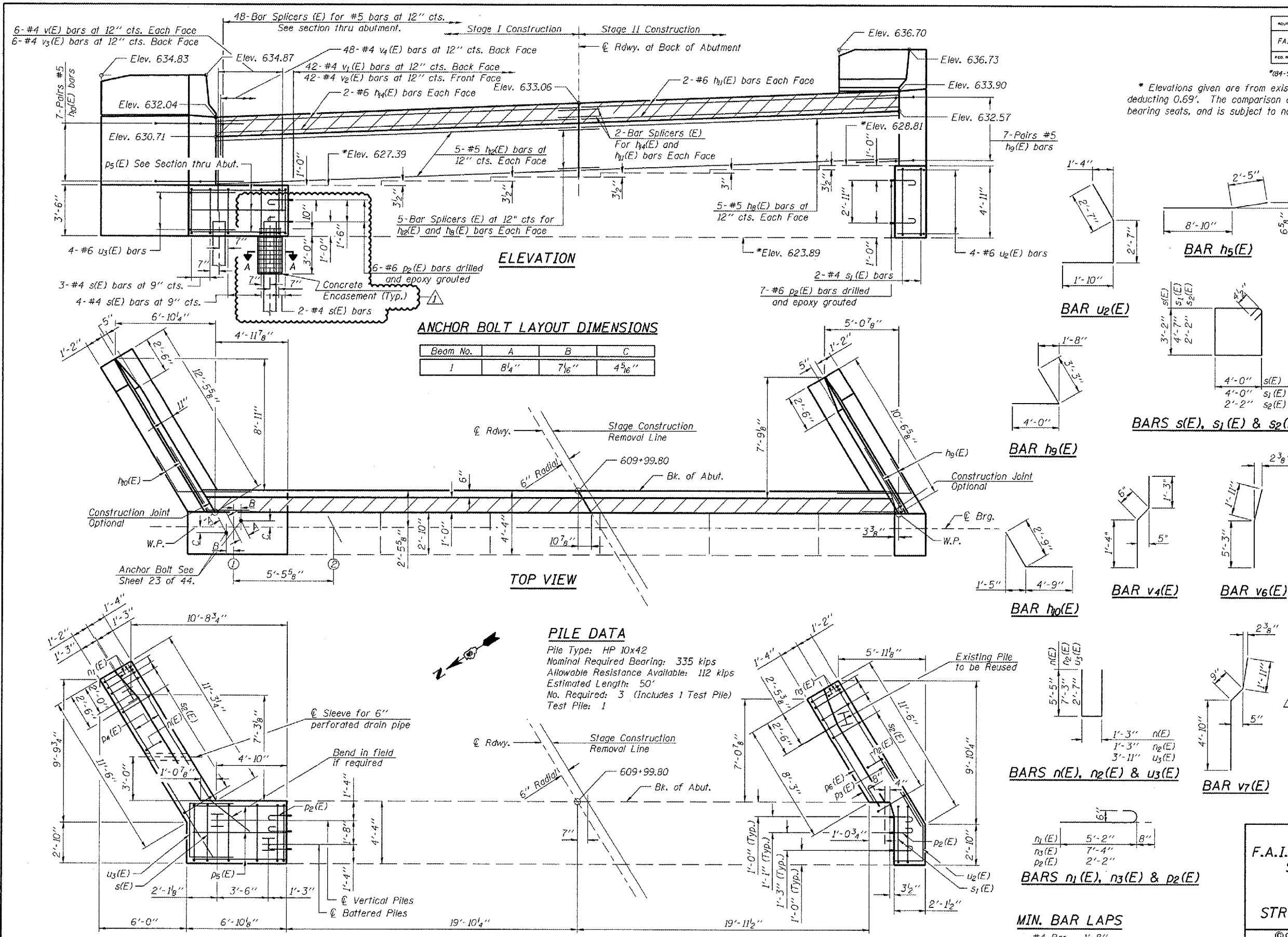
Corporate License Number 184-001-084

WESTBOUND-EAST ABUTMENT
F.A.I. 72 OVER UNION PACIFIC RAILROAD
SECTION (84-9-4)A, H.B.K., BY-1
SANGAMON COUNTY
STATION 608+51.98
STR NO. 084-0074 EB - 084-0075 WB

© Copyright Hanson Professional Services Inc. SMS_YEAR\$



96S2002B
 DATE: 01/12/06



ELEVATION

ANCHOR BOLT LAYOUT DIMENSIONS

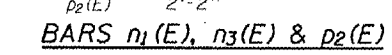
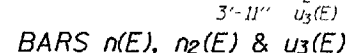
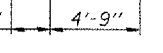
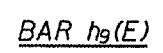
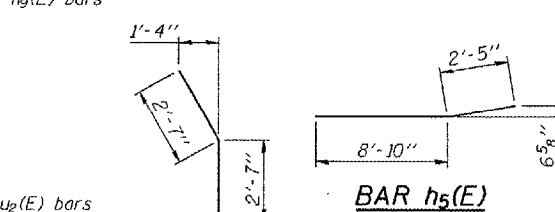
Beam No.	A	B	C
1	8 1/4"	7 1/6"	4 5/6"

TOP VIEW

PILE DATA

Pile Type: HP 10x42
 Nominal Required Bearing: 335 kips
 Allowable Resistance Available: 112 kips
 Estimated Length: 50'
 No. Required: 3 (Includes 1 Test Pile)
 Test Pile: 1

PLAN-PILE CAP



MIN. BAR LAPS

- #4 Bar - 1'-8"
- #5 Bar - 2'-2"
- #6 Bar - 2'-7"
- #7 Bar - 3'-5"

LAYOUT	MM	06/21/03
DRAWN	DAP	07/11/03
REVIEWED	JMN	10/21/03