

Contract No. 72541
ANCHOR BOLT LAYOUT DIMENSIONS

Beam No.	A	B
1	6' 7/16"	6' 5/8"
2	6' 7/16"	6' 5/8"
3	6' 7/16"	6' 5/8"
4	6' 7/16"	6' 1/16"
5	6' 7/16"	6' 1/16"

ABUTMENT BILL OF MATERIAL

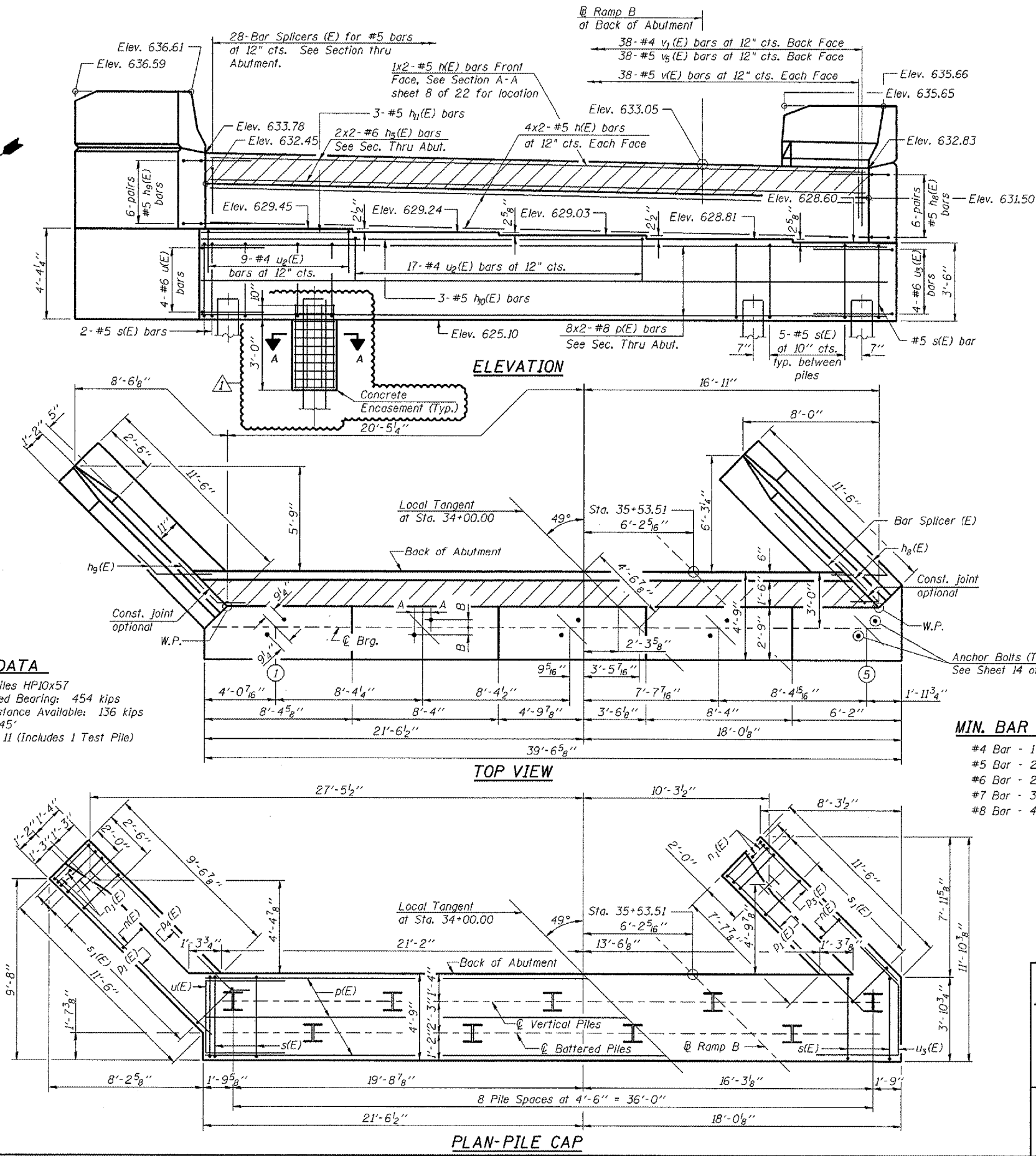
Bar	No.	Size	Length	Shape
n(E)	18	#5	19'-9"	
h ₃ (E)	25	#4	11'-3"	
h ₄ (E)	17	#4	11'-3"	
h ₅ (E)	8	#6	21'-10"	
h ₆ (E)	12	#5	7'-0"	
h ₇ (E)	12	#5	7'-1"	
h ₈ (E)	3	#5	24'-8"	
h ₉ (E)	3	#5	8'-0"	
n(E)	20	#6	13'-4"	
n ₁ (E)	12	#6	6'-10"	
p(E)	16	#8	24'-0"	
p ₁ (E)	6	#7	13'-0"	
p ₂ (E)	3	#7	11'-4"	
p ₃ (E)	3	#7	13'-1"	
s(E)	43	#5	16'-1"	
s ₁ (E)	26	#4	9'-5"	
u(E)	4	#6	9'-5"	
u ₂ (E)	26	#4	9'-9"	
u ₃ (E)	4	#6	8'-9"	
v(E)	76	#5	6'-0"	
v ₁ (E)	38	#4	3'-1"	
v ₂ (E)	24	#6	6'-9"	
v ₃ (E)	6	#6	6'-9"	
v ₄ (E)	20	#6	6'-9"	
v ₅ (E)	38	#5	2'-10"	

Structure Excavation	Cu. Yd.	128
Concrete Structures	Cu. Yd.	50.1
Reinforcement Bars, Epoxy Coated	Pound	5420
Furnishing Steel Piles HP10x57	Foot	450
Driving Piles	Foot	450
Test Piles Steel HP10x57	Each	1
Concrete Encasement	Cu. Yd.	2.9

Notes:
 Reinforcement bars designated (E) shall be epoxy coated.
 For details of Bar Splicers, see sheet 20 of 22.
 Conduit is embedded in the South Wing. For details see Conduit Details sheet in the Roadway Plans
 Corporate License Number 184-001-084

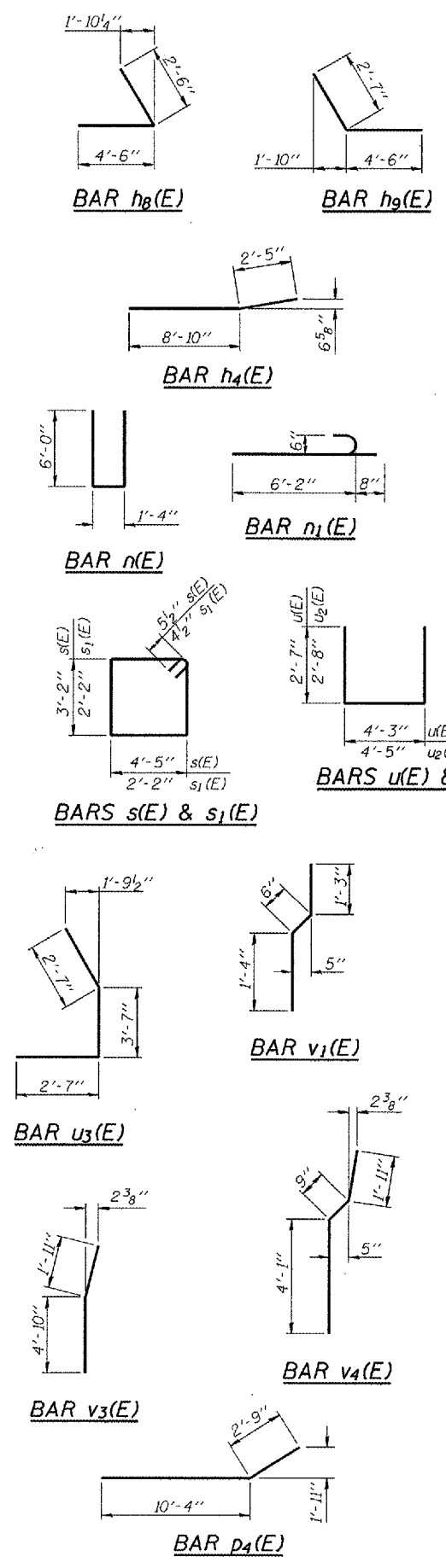
EAST ABUTMENT
 I-72/MACARTHUR BLVD. RAMP B OVER UPRR
 SECTION (84-9-4)A, H.B.K., BY, BY-1
 SANGAMON COUNTY
 STATION 33+95.61
 STRUCTURE NUMBER 084-0514

Revised 02/09/07 Rod



PILE DATA
 Type: Steel Piles HP10x57
 Nominal Required Bearing: 454 kips
 Allowable Resistance Available: 136 kips
 Est. Length: 45'
 No. Required: 11 (Includes 1 Test Pile)

MIN. BAR LAPS
 #4 Bar - 1'-8"
 #5 Bar - 2'-2"
 #6 Bar - 2'-7"
 #7 Bar - 3'-5"
 #8 Bar - 4'-6"



NO.	DATE	BY	CHKD
1	06/27/03	MMH	
2	01/04/05	DAP	
3	02/24/05	JMK	